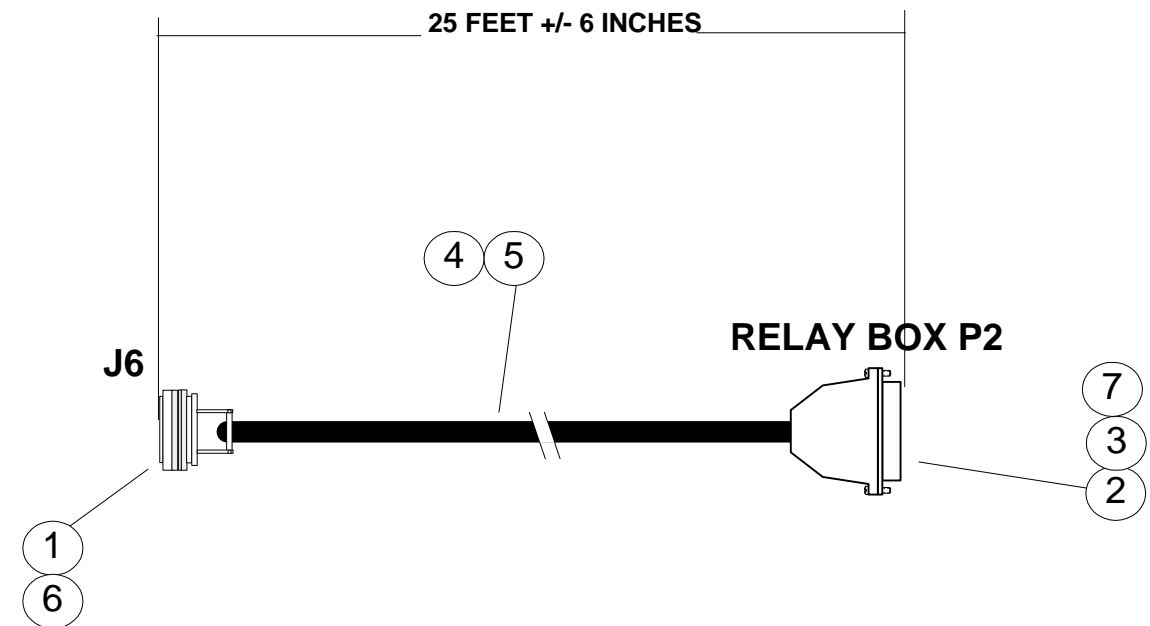
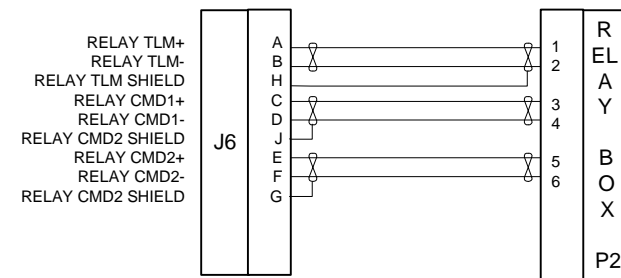


REVISIONS				
ZONE	REV	DESCRIPTION	DATE	APPROVED
	-	RELEASE PER 1110-EC-G15719	6/18/99	K.BALL
	A	UPDATED PER 1110-EC-G16613	9/29/99	K.BALL
	B	UPDATED PER 1110-EC-G17944		



NOTE:

1. LABEL WITH PART NUMBER AND SERIAL NUMBER WITH THERMOVAC APPROVED LABELS.
2. SUBSTITUTE PARTS MAY BE USED WITH ENGINEERING APPROVAL.
3. CONNECT SHIELDS WITH ITEM004 AND CLEAN OFF FLUX THEN HEAT SHRINK.
4. KEEP VERY CLEAN AND IN A BAG.

REF DES	PART NUMBER	MANUFACTURER	DESCRIPTION	QTY	U/M
ITEM001	MS3476L-12-10P	ITT	CIRC. CONNECTOR, 10P, 12 SHELL	1	EA
ITEM002	311P409-1S-B-12	Amp	Connector, D-sub, Recptacle, 9 sckt	1	EA
ITEM003	748676-1	AMP	BACKSHELL, SIZE 1	1	EA
ITEM004	M22759/16-22-9	YES	WIRE, 22 AWG, STRANDED	30	FT
ITEM005	M27500-20-TE-2-T-14-9	YES	Wire, 20 AWG twisted shielded pair	75	FT
ITEM006	M85049/52-1-12N	ITT	CIRC. CONNECTOR, SHELL	1	EA
ITEM007	G10-P1	AMP	SOCKETS	9	EA

CONTRACT NO.		<b>SPECTRUM</b> <b>ASTRO</b>		1440 N. FIESTA BLVD. GILBERT, AZ 85233	
APPROVALS	DATE	TITLE			
DRAWN G.LITTLE	6/11/99	<b>RELAY BOX TV CABLE</b>			
CHECK					
ENG		SIZE <b>B</b>	FSCM NO. <b>0T9D1</b>	DWG. NO. <b>AE-315753</b>	REV. <b>B</b>
NEXT QTY / ASSY	FINAL	NEXT ASSY	USED ON	QA	SCALE
APPLICATION			FILE RELAY BOX TV CABLE.vsd	SHEET <b>1</b> OF <b>1</b>	