

# Properties of Energetic Ions in the Solar Atmosphere from $\gamma$ -Ray and Neutron Observations

N. Vilmer · A.L. MacKinnon · G.J. Hurford

Received: 30 April 2010 / Accepted: 2 November 2010 / Published online: 11 August 2011  
© Springer Science+Business Media B.V. 2011

**Abstract** Gamma-rays and neutrons are the only sources of information on energetic ions present during solar flares and on properties of these ions when they interact in the solar atmosphere. The production of  $\gamma$ -rays and neutrons results from convolution of the nuclear cross-sections with the ion distribution functions in the atmosphere. The observed  $\gamma$ -ray and neutron fluxes thus provide useful diagnostics for the properties of energetic ions, yielding strong constraints on acceleration mechanisms as well as properties of the interaction sites. The problem of ion transport between the accelerating and interaction sites must also be addressed to infer as much information as possible on the properties of the primary ion accelerator. In the last couple of decades, both theoretical and observational developments have led to substantial progress in understanding the origin of solar  $\gamma$ -rays and neutrons. This chapter reviews recent developments in the study of solar  $\gamma$ -rays and of solar neutrons at the time of the *RHESSI* era. The unprecedented quality of the *RHESSI* data reveals  $\gamma$ -ray line shapes for the first time and provides  $\gamma$ -ray images. Our previous understanding of the properties of energetic ions based on measurements from the former solar cycles is also summarized. The new results—obtained owing both to the gain in spectral resolution (both with *RHESSI* and with the non solar-dedicated *INTEGRAL/SPI* instrument) and to the pioneering imaging technique in the  $\gamma$ -ray domain—are presented in the context of this previous knowledge. Still open questions are emphasized in the last section of the chapter and future perspectives on this field are briefly discussed.

**Keywords** Sun: flares · Sun: gamma-rays · Sun: energetic particles · Sun: acceleration mechanisms

---

N. Vilmer (✉)

LESIA-Observatoire de Paris, CNRS, UPMC Univ Paris 06, Univ. Paris-Diderot, Paris, France  
e-mail: [nicole.vilmer@obspm.fr](mailto:nicole.vilmer@obspm.fr)

A.L. MacKinnon

DACE/Physics and Astronomy, University of Glasgow, Glasgow, G12 8QQ, UK  
e-mail: [a.mackinnon@educ.gla.ac.uk](mailto:a.mackinnon@educ.gla.ac.uk)

G.J. Hurford

Space Sciences Laboratory, University of California, Berkeley, CA 94720-7450, USA  
e-mail: [ghurford@ssl.berkeley.edu](mailto:ghurford@ssl.berkeley.edu)

## 1 Introduction

The first evidence of acceleration of charged particles (electrons and ions) to relativistic energies in association with solar flares was found in 1942 with the discovery of large increases in the count rates of several ground level cosmic-ray intensity monitors. These observations told us, more than fifty years ago, that solar flares are capable of accelerating protons to GeV energies. While Biermann et al. (1951) had predicted that relativistic protons accelerated during a solar flare could produce a flux of high-energy neutrons observable at the Earth (as well as some  $\gamma$ -ray emission), Morrison (1958) published the first prediction of  $\gamma$ -ray fluxes expected from several celestial objects including solar flares. These first estimates were at the base of former detailed theoretical studies of high-energy neutral emissions which were initiated by Lingenfelter and Ramaty (1967a). They provided a detailed treatment of the production of nuclear reactions in the solar atmosphere and calculated the yield of neutrons, positrons and  $\gamma$ -ray lines using normalized rigidity spectra for the accelerated ions. The first observational evidence for  $\gamma$ -rays came from the observations of the flare SOL1972-08-04 with the *OSO-7*<sup>1</sup>  $\gamma$ -ray spectrometer (Chupp et al. 1973, see Fig. 1), which confirmed the prediction by Morrison that nuclear reactions in the solar atmosphere could produce  $\gamma$ -ray lines. Pioneering observations of solar  $\gamma$ -ray lines were also obtained for later flares of August 1972 by spectrometers on *Prognoz-6* (Talon et al. 1975) and for the flares SOL1978-07-11T10:54 by *HEAO 1* (Hudson et al. 1980) and SOL1979-11-09T03:20 by *HEAO 3* (Prince et al. 1982). Since then solar  $\gamma$ -ray astronomy has provided a new window for the study of ion acceleration in solar flares.

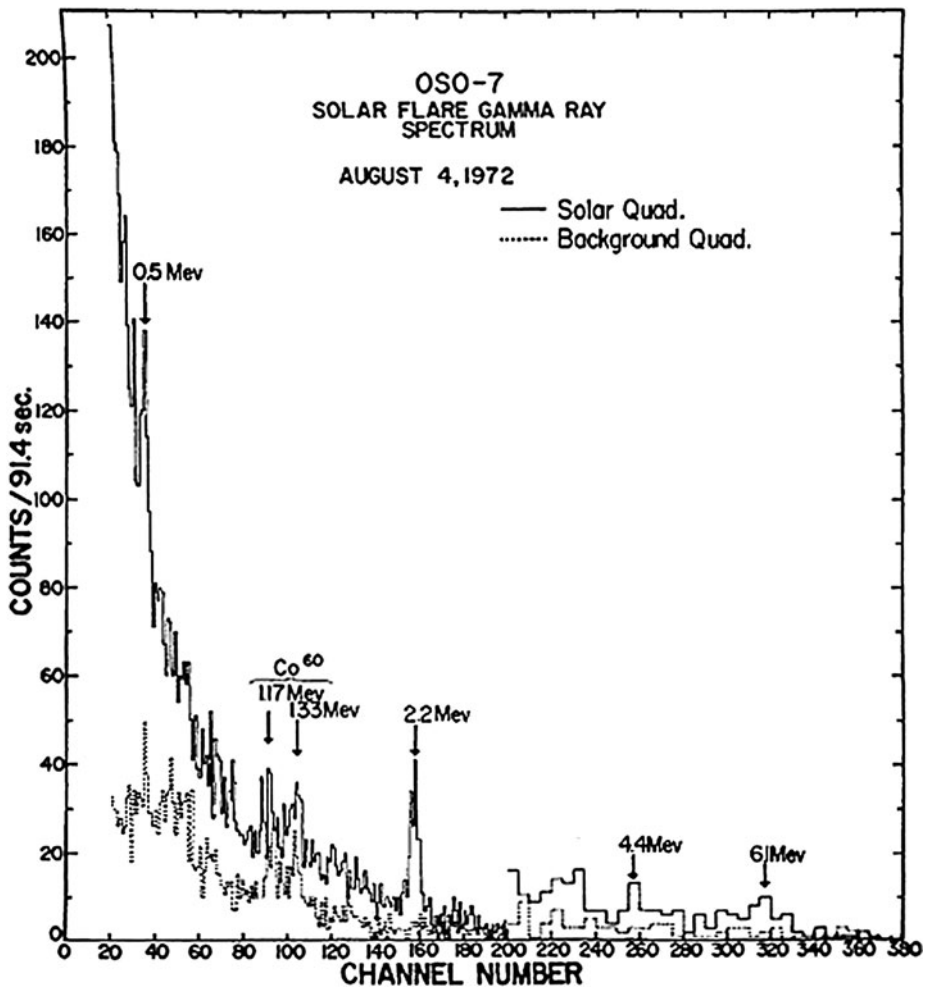
Energetic ions interacting with the solar atmosphere produce a wealth of  $\gamma$ -ray emissions. A complete  $\gamma$ -ray line spectrum is produced through interactions of ions in the range  $\sim 1$ –100 MeV/nucleon and consists of several nuclear de-excitation lines, neutron capture and positron annihilation lines. (See, for example, Chupp (1984), Ramaty (1986), Chupp (1996), Trotter and Vilmer (1997), Share and Murphy (2000, 2006), Vilmer and MacKinnon (2003)). The temporal and spectral characteristics of all these radiations provide strong constraints on acceleration timescales, ion energy spectra and numbers as well as energetic ion abundances. If more energetic ions are present, over a few hundred MeV/nucleon, nuclear interactions with the ambient medium produce secondary pions whose decay products lead to a broad-band continuum at photon energies above 10 MeV (with a broad peak around 70 MeV from neutral pion radiation) (Stecker 1970; Murphy et al. 1987) and also secondary energetic neutrons which, if energetic enough, may escape from the Sun and be directly detected in interplanetary space ( $\geq 10$  MeV neutrons at 1 AU) or at ground level ( $\geq 200$  MeV neutrons) (see, e.g., Chupp and Dunphy 2000; Chupp and Ryan 2009). The importance of observing neutrons was pointed out by Biermann et al. (1951) and by Lingenfelter et al. (1965a, 1965b). Lower-energy neutrons (kinetic energies below 100 MeV) can only be observed in space because they are strongly attenuated in the Earth's atmosphere and cannot reach the ground. Neutrons with kinetic energies higher than 100 MeV can be observed on the ground and hence with simultaneous observations in space and on the ground, it is possible to obtain the energy spectrum of solar neutrons and of accelerated particles, in a wide energy range.

The first detection of solar high-energy neutrons was provided by the observations of the *SMM/GRS*<sup>2</sup> spectrometer for the flare SOL1980-06-21T02:00 (X2.6) which showed

---

<sup>1</sup>Orbiting Solar Observatory-7.

<sup>2</sup>*Solar Maximum Mission*/Gamma Ray Spectrometer.



**Fig. 1** Time-integrated  $\gamma$ -ray spectrum observed aboard *OSO-7* in the solar and background quadrants for the discovery event, SOL1972-08-04. The integration time is from 06:24 to 06:33 UT. The solar quadrant shows significant enhancement up to 7 MeV as well as line emissions at 0.5 MeV, 2.2 MeV, 4.4 MeV and 6.1 MeV. The lines at 1.17 and 1.33 MeV are from the on-board calibration source (from Suri et al. 1975)

not only the emission from ultra-relativistic electrons at the time of the flare but also a later signature from high-energy neutrons (Chupp et al. 1982). This same experiment provided the first observations of pion-decay radiation in solar flares (high energy radiation produced by ultra-relativistic ions) (Forrest et al. 1985) for the event SOL1982-06-03T13:26 (X8.0). For this event, solar neutrons were also detected for the first time at ground-level by the IGY-type neutron monitor installed at Jungfraujoch, Switzerland, as well as by *SMM/GRS* (Chupp et al. 1987). With these observations, all the components predicted by Lingenfelter and Ramaty (1967a) had been detected (see, e.g., Chupp 1996, for a detailed review of early  $\gamma$ -ray observations of solar flares). Since these first observations, solar energetic neutrons have been detected with ground-based detectors on a handful of occasions. 10–120 MeV neutrons were also detected in space with *COMPTEL* on the *Compton Gamma-Ray Observatory*

(*CGRO*) mission, whose mode of operation enabled direct determination of their energies (Ryan et al. 1993; Kocharov et al. 1998). We consider these various neutron observations in more detail below (Sect. 4).

Before the launch of *RHESSI* and *INTEGRAL* in 2002, high energy observations of solar flares had been obtained for two solar cycles respectively with *SMM/GRS* as well as on *Hinotori* for cycle 21 and by the *PHEBUS* and *SIGMA* experiments aboard *Granat*, the wide-band spectrometer on *Yohkoh*, *GAMMA-1* and *CGRO* for cycle 22 (see, e.g., Chupp 1984, 1996; Ramaty 1986; Trotter and Vilmer 1997; Vilmer and MacKinnon 2003, for reviews). Before the advent of *RHESSI* observations, the solar electromagnetic radiation above 100 keV (including the  $\gamma$ -ray line region) was one of the last spectral domains with no spatially resolved observations, so that no information was available on the location of the interaction sites of the energetic ions (nor of electrons above 100 keV) on the Sun.  $\gamma$ -ray line emission from ions had been observed in many flares but the quantitative constraints from  $\gamma$ -ray line spectroscopy, which provides information on the bulk of the flare fast ions, had been deduced from observations with limited spectral resolution. Higher energy radiations and neutrons have been observed in fewer events, but they provide crucial information on the extremes of particle acceleration.

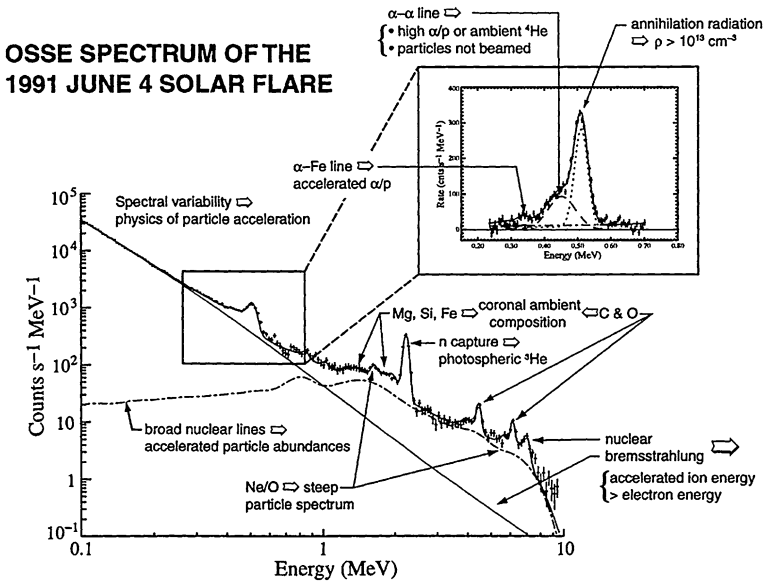
Since the launch of the solar-dedicated *RHESSI* mission (Lin et al. 2002) and of *INTEGRAL* in 2002 (Vedrenne et al. 2003), both equipped with high-resolution germanium detectors, several  $\gamma$ -ray line flares produced strong enough fluxes so that a detailed  $\gamma$ -ray line shape analysis could be achieved for a few events. Furthermore, since February 2002, *RHESSI* has observed a total of 29 events above 300 keV with 18 clearly showing  $\gamma$ -ray line emission (Shih et al. 2009b). Pioneering results were obtained by *RHESSI* on a few of these events on the localization of the interaction sites of energetic ions. We shall review below the results provided by *RHESSI* and also by *INTEGRAL* on these issues.

## 2 $\gamma$ -Ray Line Observations of Energetic Ions

### 2.1 General Features of a $\gamma$ -Ray Spectrum

Many studies performed before the launch of *RHESSI* have been devoted to the study of the complete  $\gamma$ -ray line spectrum which is produced in the solar atmosphere through the interactions of ions in the  $\sim 1$ –100 MeV/nucleon range. In contrast to the monotonic electron bremsstrahlung continuum, the nuclear  $\gamma$ -ray spectrum displays a rich variety of features: broad and narrow lines and various sorts of continuum arising from several mechanisms. The bombardment of ambient nuclei of the solar atmosphere by accelerated protons and  $\alpha$  particles produces a whole spectrum of de-excitation  $\gamma$ -ray lines (prompt narrow lines), almost all of them with rest energies lying between a few hundred keV and 8 MeV. Inverse reactions in which accelerated C, O and heavier nuclei collide on ambient H and He are the origin of prompt broad lines centered at the same line energy. Since the emitting nuclei retain significant momentum after the exciting collisions, these lines are substantially Doppler-broadened and/or shifted, to the extent that they are not individually resolvable. These broad lines merge with many other weaker lines from nuclei heavier than oxygen to form an unresolved continuum (see Sect. 2.11) (Murphy et al. 2009). Figure 2 from Share and Murphy (2000), based on the *CGRO/OSSE*<sup>3</sup> observations of the large flare SOL1991-06-04T03:37 (X12.0), shows the major features of the  $\gamma$ -ray line spectrum: strong narrow

<sup>3</sup>Compton Gamma Ray Observatory/Oriented Scintillation Spectrometer Experiment.



**Fig. 2** OSSE spectrum of the flare SOL1991-06-04T03:37 (X12.0) summarizing the different components and the physics from  $\gamma$ -ray line spectroscopy (from Share and Murphy 2000). Reproduced by permission of the ASP

de-excitation lines are found at 6.129 MeV from  $^{16}\text{O}$ , 4.438 MeV from  $^{12}\text{C}$ , 1.779 MeV from  $^{28}\text{Si}$ , 1.634 MeV from  $^{20}\text{Ne}$ , 1.369 MeV from  $^{24}\text{Mg}$  and 0.847 MeV from  $^{56}\text{Fe}$ . The broad lines merge into a quasi continuum dominating over the bremsstrahlung emission from electrons in the  $\sim 1$ –8 MeV range. The single strongest line is the extremely narrow 2.223 MeV deuterium formation line. Also present are photons of flare origin at 0.511 MeV from positron annihilation and the broad feature at 0.4–0.5 MeV formed from the two lines, at 0.429 and 0.47 MeV, that accompany formation of  $^7\text{Li}$  and  $^7\text{Be}$  in  $\alpha$ - $^4\text{He}$  fusion reactions.

## 2.2 Magnetic Loop Transport and Interaction Model

### 2.2.1 Gamma-Ray Line Production Including Transport

Information derived from  $\gamma$ -ray line emissions on the characteristics of the accelerated ions requires a comprehensive understanding of the transport of these energetic ions between the acceleration site, presumably located in the low corona, and the interaction and emitting sites in the denser layers of the solar atmosphere. This requires a model for ion acceleration, transport in flare loops and interaction. Several models have been developed since the 1980s on this topic, a couple of which we describe. The recent model described by Murphy et al. (2007) addresses particle transport and interaction and includes energy losses due to Coulomb collisions, removal by nuclear reactions, magnetic mirroring in the converging magnetic flux and MHD pitch-angle scattering in the corona, treated via the quasilinear formalism. The loop formalism is the one previously developed by Hua et al. (1989). The loop consists of a semicircular coronal portion of length  $L$  and two straight portions extending vertically from the transition region through the chromosphere into the photosphere. Below the transition region, the magnetic field strength is assumed proportional to a power  $\delta$  of the pressure (Zweibel and Haber 1983) taken here as  $\delta \simeq 0.2$ . Such a converging magnetic field

results in mirroring of accelerated particles. Pitch-angle scattering is characterized by  $\Lambda$ , the mean free path required for an arbitrary initial angular distribution to relax to an isotropic distribution. The dependence of  $\Lambda$  on particle energy is expected to be weak (see discussion by Hua et al. 1989) and is assumed to be independent of particle energy. In the model, the level of pitch-angle scattering of the energetic particles is simply characterized by  $\lambda$ , the ratio of  $\Lambda$  to the loop half-length  $L_c = L/2$ . Magnetic convergence and pitch-angle scattering determine the angular distribution of the accelerated particles when they interact with the ambient medium, which is crucial to several aspects of the observable emissions. Several height-density profiles  $n(h)$  for the solar atmosphere are also assumed.

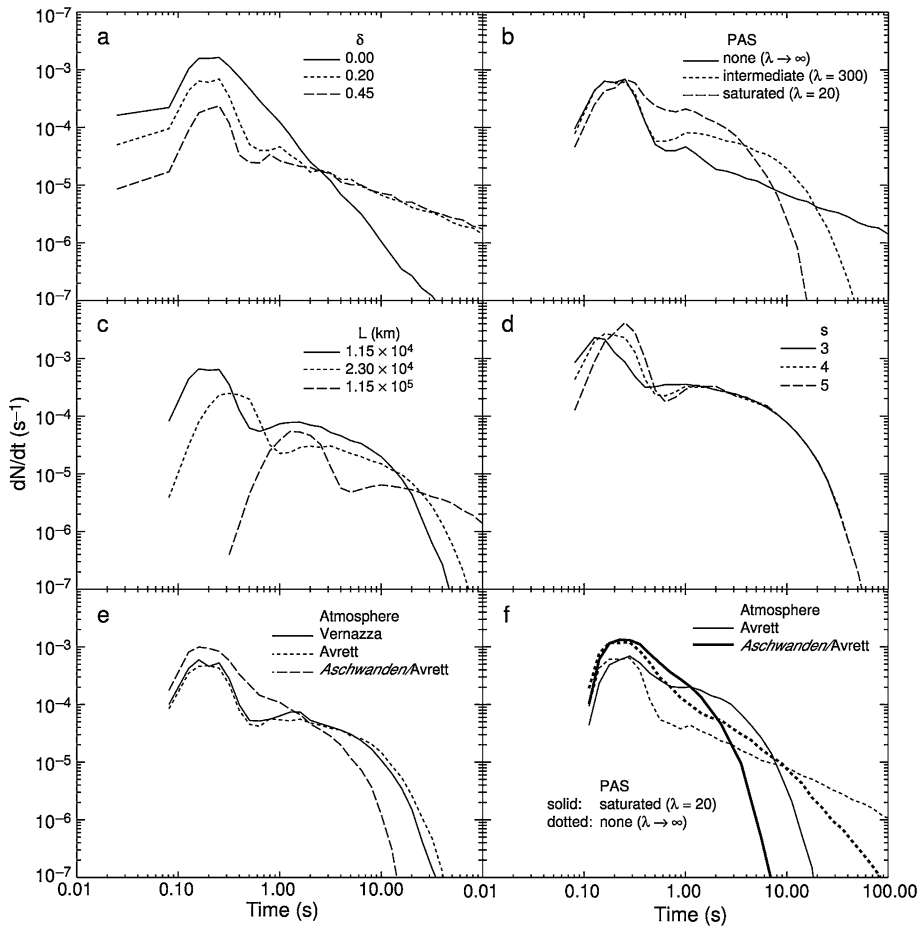
### 2.2.2 Time History of the Nuclear Interaction Rate

Murphy et al. (2007) studied the effects of transport on temporal behavior by assuming instantaneous release of all particles at  $t = 0$ . Actual observed time profiles represent the convolution of this behavior with the time profile of the particle accelerator. In the absence of magnetic convergence, ions do not mirror and the nuclear interaction time history depends only on the energy loss rate in the lower chromosphere and upper photosphere where the density is greatest and most of the interactions occur.

In the presence of magnetic convergence, particles behave differently depending on pitch-angle  $\alpha$ . Increase of the magnetic field and of the density towards the deeper atmosphere leads to partial particle trapping and to the formation of a loss cone of angular half-width ( $\alpha_0$ ). Ions with  $\alpha < \alpha_0$  precipitate in a loop transit time, behaving as described above. Ions outside the loss cone mirror and lose energy much more slowly as they traverse the low-density corona. These interactions thus occur on longer time scales, with the time scale increasing with increasing convergence. Pitch-angle scattering causes the loss cone to be continuously repopulated, and in fact is essential if observed, impulsive time profiles are to be understood (Zweibel and Haber 1983; Hua et al. 1989). As a result, with increasing pitch-angle scattering rate (i.e., decreasing  $\lambda$ ) the nuclear interaction rate increases at early times and correspondingly decreases at later times. However, the time history is no longer affected by increasing pitch-angle scattering when the rate of loss-cone replenishment exceeds the rate of nuclear reactions in the loss cone. Increasing the loop length increases the time scale of the interaction rate since mirroring particles spend more time at lower coronal densities where nuclear reactions are less likely. All these effects are illustrated in Fig. 3, from Murphy et al. (2007). On short timescales ( $< 1$  s) the effects of velocity dispersion may be seen, as higher energy particles transit the loop and encounter the deeper regions more rapidly. On longer timescales, trapping and precipitation, via pitch-angle scattering, dominate the temporal behavior.

The results of these detailed calculations are summarized and put to work in the “trap-plus-precipitation” model, in which the flaring atmosphere is divided into a coronal, magnetic trap characterized by a single, uniform density  $n_0$ , and a high density, chromosphere-photosphere region. The escape of particles from the trap to the deep atmosphere is summarized in an escape rate. The saturation of escape rate with increasing scattering rate, described above, may be recognized as the “strong pitch-angle scattering” limit identified by Kennel and Petschek (1966), in which case the coronal pitch-angle distribution is always more or less isotropic and the escape time from the trap is given by (see, e.g., Hulot et al. 1989)

$$\mu_{prep} = \frac{\alpha_0^2}{2} \frac{V}{L}, \quad (2.1)$$



**Fig. 3** Nuclear interaction rate as a function of the different parameters: **(a)** magnetic convergence, **(b)** pitch-angle scattering, **(c)** loop length, **(d)** spectral index, **(e)** atmospheric model, **(f)** combined effect of the pitch-angle scattering and of the atmospheric model. The yields are normalized to one proton of energy greater than 30 MeV (from Murphy et al. 2007). Reproduced by permission of the AAS

where  $\alpha_0$  and  $L$  are as above and  $V$  is the particle velocity. For scattering rates below the strong limit, the resulting long coronal particle lifetimes become inconsistent with the short duration usually observed in solar  $\gamma$ -ray bursts (Zweibel and Haber 1983). The trap-plus-precipitation model has been applied to observations, with results described below (Sect. 2.2.6).

### 2.2.3 Angular Distribution of the Interacting Ions

In the presence of magnetic convergence, particles encounter the greatest densities at their mirror points when they also have the greatest pitch angles. Observations (e.g., of line shapes) reveal the density-weighted, source-integrated pitch-angle distributions and these may consequently take a “fan-beam” form (e.g., Hua and Lingenfelter 1987b). As pitch-angle scattering approaches the strong limit ( $\lambda \approx 20$ ) (see Sect. 2.2.2 for the definition of  $\lambda$ ),



however, more and more particles precipitate in the loss cone, at small pitch angles, and the density-weighted distribution becomes more strongly beamed downward. So the overall pitch-angle distribution reflects a combination of the initial pitch-angle distribution, the degree of magnetic convergence in the loop, and the pitch-angle scattering rate (see Murphy et al. 2007 for details).

#### 2.2.4 Depth Distribution of the Interaction Site

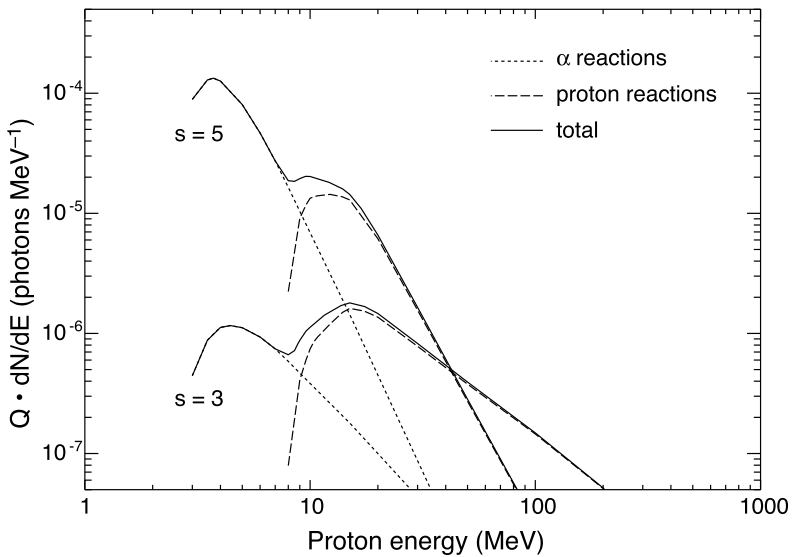
In the absence of magnetic convergence, there is no mirroring and the depth distribution directly reflects the grammage required for the accelerated ions to interact as they move downward through the solar atmosphere. In the presence of magnetic convergence, mirroring results in interactions occurring at higher elevations (and therefore lower densities) as more and more particles are prevented from penetrating the lower atmosphere. Even with minimal convergence and in case of no pitch-angle scattering, a significant fraction of the interactions occurs at low densities (almost 20% of the interactions occur at densities less than  $10^{10} \text{ cm}^{-3}$ ). As the scattering is increased, more particles are able to precipitate and the bulk of the interactions move deeper, to higher densities. Because higher-energy ions tend to interact farther along their paths, harder particle spectra result in interactions occurring at higher densities since more higher-energy ions are producing the interactions. Similarly, interactions whose cross-sections have higher threshold energies tend to occur preferentially at higher densities. This dependence of the depth distribution on the interaction cross-section also explains why the depth distribution is affected by the accelerated  $\alpha$ /proton ratio. Alpha-particle interactions generally have lower threshold energies and, as just discussed, such interactions occur at lower densities. When the  $\alpha$ /proton ratio is high, a larger fraction of the line yield is due to such reactions and the depth distribution shifts to lower densities (see Murphy et al. 2007, for details).

#### 2.2.5 Effective Energies of the Accelerated Ions Producing $\gamma$ -Ray Lines

The main factor determining the effective energy range for a nuclear reaction is the cross-section, but the shape of the accelerated-ion spectrum can be important. For thin-target interactions, only ions with initial energies where the cross-section is significant contribute. For thick target interactions, however, even ions with higher initial energies also contribute, since they can lose energy and then interact at energies where the cross-section is significant.

Murphy et al. (2007) determined the effective ion energies to produce a  $\gamma$ -ray line for a particular ion spectrum by weighting yields from monoenergetic ions with the spectrum. The ambient abundances are assumed to be coronal (Ramaty et al. 1996). As an example, Fig. 4 from Murphy et al. (2007) shows the differential yield of the 1.634 MeV  $^{20}\text{Ne}$  line as a function of accelerated ion energy for power-law spectra with indices of 3 and 5 and accelerated  $\alpha$ /proton = 0.5. These energies are the energies of the ions leaving the acceleration region. Separate contributions to the line from accelerated protons (dashed curves) and  $\alpha$  particles (dotted curves) are plotted. For soft spectra, the  $\alpha$ -particle contributions dominate due to their lower threshold energies, and the most effective ion energies are around a few MeV/nucleon. For hard spectra, the proton interactions become important due to their higher threshold energies and because the effective energies are higher. An effective ion energy range for producing the line is defined as follows: the ion energy where the yield is maximum is determined and the effective range is the one for which the yield has fallen to 50% on each side of the maximum. We note that if the effective energy distribution is very broad, the arbitrary value of 50% could be misleading.

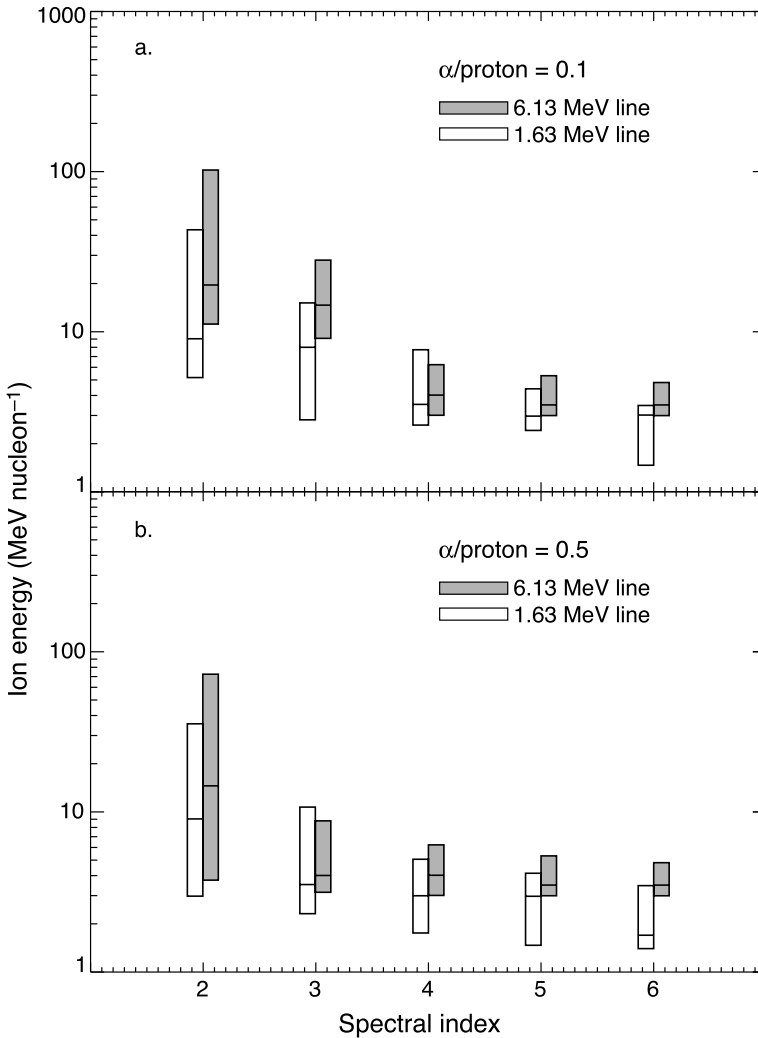




**Fig. 4** Yield of the 6.129 MeV  $^{16}\text{O}$  line weighted by accelerated ion power-law spectra with indices  $s = 3$  and 5. The contributions to the line from accelerated protons and  $\alpha$  particles are separately shown (from Murphy et al. 2007). Reproduced by permission of the AAS

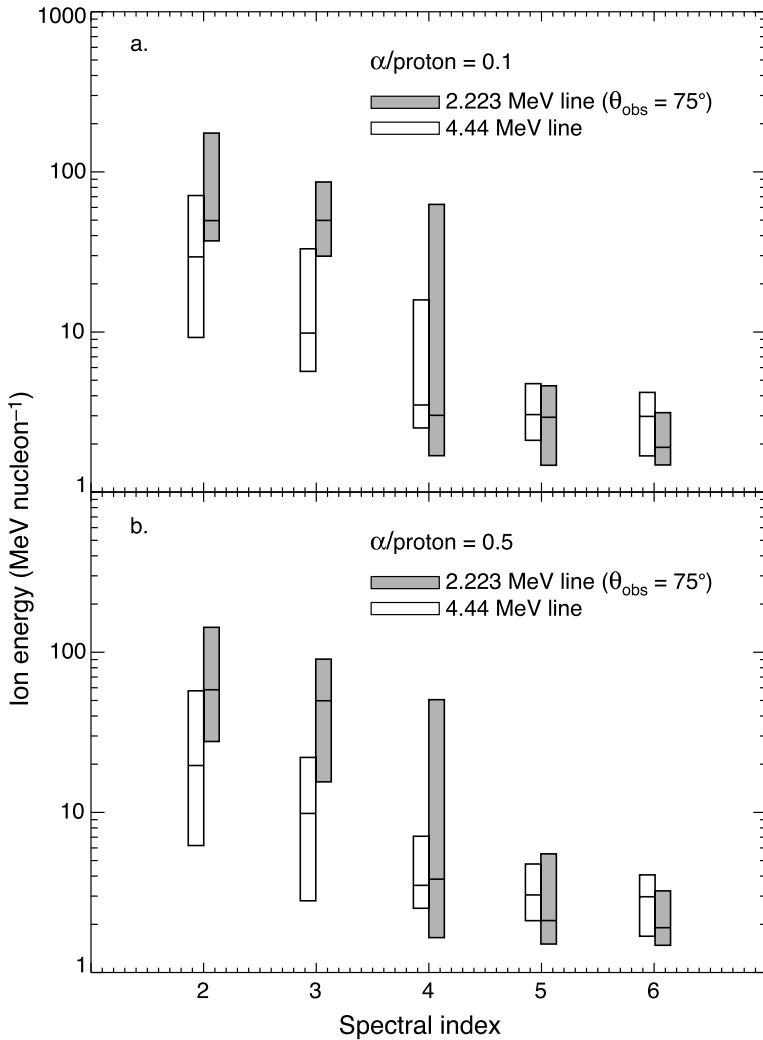
The fluence ratio of the 6.129 MeV  $^{16}\text{O}$  and 1.634 MeV  $^{20}\text{Ne}$  lines has been frequently used as a measure of the accelerated-ion spectral index. Figure 5 shows the effective accelerated-ion energy ranges for producing the 1.634 MeV  $^{20}\text{Ne}$  line (white boxes) and the 6.129 MeV  $^{16}\text{O}$  line (grey boxes) for several power-law spectral indices and for accelerated  $\alpha/\text{proton} = 0.1$  (panel a) and 0.5 (panel b). The horizontal line within each box corresponds to the peak of the distribution. The figure shows that the effective energy range for producing the  $^{16}\text{O}$  line is usually shifted to energies higher than for the  $^{20}\text{Ne}$  line. The extent of the separation of the effective energy ranges for the two lines determines the sensitivity of the ratio to the spectral index. Because the separation for these two lines is not large, the ratio is not very sensitive. For very hard spectra, the upper range of the effective ion energies can be  $\sim 100$  MeV/nucleon, but for most (softer) spectra it is less than 10 MeV/nucleon. The lower range is typically a few MeV/nucleon but for very soft spectra (particularly when the  $\alpha/p$  ratio has the commonly assumed value of 0.5) it can be less than 2 MeV/nucleon. As the spectrum hardens, the higher-energy proton reactions begin to contribute and the effective ion energy range shifts to higher energies and becomes broader as interactions of both  $\alpha$  particles and protons contribute. The interpretation of this particular energy-distribution diagnostic is discussed further below (Sect. 2.3), where the roles of ambient chemical abundances and the relative contributions of protons and  $\alpha$ -particles are discussed.

The fluence ratio of the 4.438 MeV  $^{12}\text{C}$  de-excitation line and the 2.223 MeV line has also been used as a measure of the accelerated-ion spectral index. Figure 6 shows the effective accelerated ion energy ranges for the 4.438 MeV line (white boxes) and the 2.223 MeV line (grey boxes) for several power-law spectral indices and for accelerated  $\alpha/\text{proton} = 0.1$  (panel a) and 0.5 (panel b). For hard spectra (spectral index  $s < 4$ ), the effective ion energies for the neutron capture line extend to very high energies, up to  $\sim 100$  MeV/nucleon, and are generally much higher than those producing the  $^{12}\text{C}$  line. However, for soft spectra ( $s > 4$ ), the effective ion energies for the neutron capture line can be very low ( $< 7$  MeV/nucleon)



**Fig. 5** Effective accelerated ion energies for production of the 1.634 MeV  $^{20}\text{Ne}$  line (white boxes) and 6.129 MeV  $^{16}\text{O}$  line (grey boxes) as a function of spectral index. The effective energy ranges are the 50% yield range as defined in the text. Panel (a) is for accelerated  $\alpha/\text{proton} = 0.1$  and panel (b) is for 0.5 (from Murphy et al. 2007). Reproduced by permission of the AAS

due to neutron production by the exothermic ( $\alpha, n$ ) reactions on heavy elements. For such soft spectra the effective ion energies for the neutron capture line are even less than those for the  $^{12}\text{C}$  line. As the flare location moves from disk center to limb, the effective energies shift to slightly lower energies since the neutrons from higher energy reactions are generally produced deeper and are subsequently more attenuated by Compton scattering. When a spectral index is derived using the ratio of these two lines, the relevant ion energies cover a broad range of energies. For hard spectra, the relevant ion energy range extends from a few MeV/nucleon up to and greater than 100 MeV/nucleon. For soft spectra ( $s > 4$ ), the relevant ion energy range is much narrower, from around 1 to a few MeV/nucleon. For very soft



**Fig. 6** Effective accelerated ion energies for production of the 4.438 MeV <sup>12</sup>C line (white boxes) and 2.223 MeV neutron capture line (grey boxes) as a function of spectral index. The effective energy ranges are the 50% yield range as defined in the text. Panel (a) is for accelerated  $\alpha/\text{proton} = 0.1$  and panel (b) is for 0.5. For the neutron capture line,  $\lambda = 300$ ,  $\delta = 0.2$ ,  $L = 11,500$  km, and  $\theta_{\text{obs}} = 75^\circ$  (from Murphy et al. 2007). Reproduced by permission of the AAS

spectra, the lack of separation of the effective ion energies producing the two lines reduces the sensitivity of the ratio to the spectral index.

### 2.2.6 Loop Parameters and Time Development of $\gamma$ -Radiation

Murphy et al. (2007) discuss an integrated approach to the interpretation of  $\gamma$ -ray measurements, distinguishing in particular between the deduction of quantities describing the accelerated particles (“acceleration parameters”) and quantities describing the atmospheric environment in which the particles evolve and radiate (“physical parameters”—loop lengths,

target abundances, parameters describing the state of plasma turbulence in the corona).  $\gamma$ -ray measurements in turn yield various quantities, each of which contains information on some combination of acceleration and/or physical parameters. De-excitation line fluences, for example, are determined by acceleration parameters and otherwise only by source region chemical abundances. Line widths and centroid energies, on the other hand, are determined by the energy distribution and composition of energetic ions, but also by the amount of magnetic convergence in the loop and the degree of pitch-angle scattering, i.e., in principle, the energy distribution over wavenumbers of coronal MHD turbulence, but typically parametrized in terms of the ion mean free path  $\lambda$  (normalized to the loop half-length). Below we concentrate on deduction of loop parameters from timing measurements.

Peak time delays, i.e., differences between the times of peak flux measured at different photon energies, have been reported in a few flares between hard X-rays and  $\gamma$ -ray line emissions (e.g., Hulot et al. 1989; Yoshimori 1989). Their interpretation was focused on the deduction of loop parameters. The relative timing of prompt  $\gamma$ -ray line emissions and of hard X-rays was studied in this context by Hulot and collaborators. These models were again used to interpret the delays of the hard X-ray and  $\gamma$ -ray line emissions observed for two flares by *ISEE-3* and *SMM/GRS* (Hulot et al. 1992) and also applied to one of the  $\gamma$ -ray line flares observed with *RHESSI* (Dauphin and Vilmer 2007).

For the study of temporal behavior, the basic characteristics of the hard X-ray and  $\gamma$ -ray trap-plus-precipitation models are summarized above, and described in Vilmer et al. (1982) and Hulot et al. (1989). The principle of the model is the following: electrons and ions are supposed to be continuously injected over a finite injection time in a coronal loop where they experience trapping and pitch-angle scattering as above. While particles trapped in the loops produce X-ray and  $\gamma$ -ray thin-target emissions, electrons and protons escaping from the trap propagate downwards to the denser chromospheric layers where they produce hard X-ray and  $\gamma$ -ray line emissions in a thick-target approximation. In these works, the precipitation rate is supposed to be in the “strong diffusion limit” given in (2.1). The free, “physical” parameters of the model describing the loop thus reduce to the precipitation rate (Sect. 2.1) of the trapped particles into the chromosphere and the density of the ambient medium. Additional parameters describe the production of energetic particles: the spectral index and the time evolution of the injected particles which in this model are not instantaneously, but continuously released. Energetic electrons, protons and alphas are assumed injected in the corona at a rate given by

$$q(E, t) = q_0 f(E) f(t), \quad (2.2)$$

where  $q_0$  is the amplitude of the injection and  $f(t)$  is given by a simple parametric form with rise-and-fall behavior:

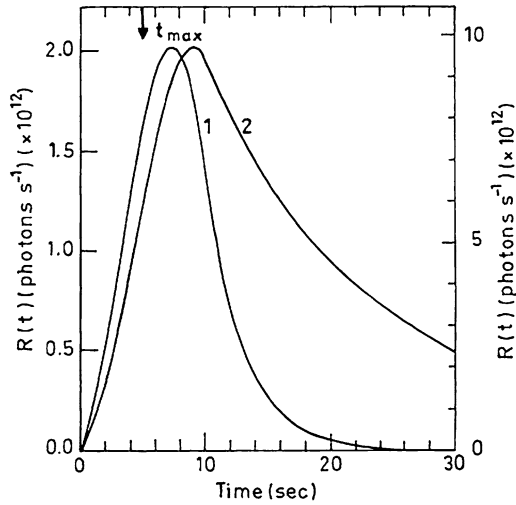
$$\begin{aligned} f(t) &= (t - t_0)(2t_{max} - (t - t_0)) \quad \text{for } t_0 \leq t \leq 2t_{max} + t_0; \\ f(t) &= 0 \quad \text{elsewhere,} \end{aligned} \quad (2.3)$$

where  $t_{max}$  and  $t_0$  are, respectively, the peak time and the starting time of the injection. Here  $f(E)$  represents the energy spectrum of injected electrons and ions;  $f(E)$  is taken as a power law in energy with a spectral parameter  $\delta$  defined by

$$f(E) = E^{-\delta}. \quad (2.4)$$

These models compute electron bremsstrahlung radiation and the strong  $\gamma$ -ray lines at 6.129 MeV from  $^{16}\text{O}$ , 4.438 MeV from the first excited state of  $^{12}\text{C}$  populated directly

**Fig. 7** Time profile of the production of the line at 4.4 MeV in the case of the trap-plus-precipitation model developed by Hulot et al. (1989) in the case of a short injection duration ( $2t_{max} = 10$  s)  $t_{max}$  and for two values of the precipitation rate  $\alpha_0^2/L = 10^{-5}$  km<sup>-1</sup> and  $10^{-6}$  km<sup>-1</sup> (from Hulot et al. 1989)

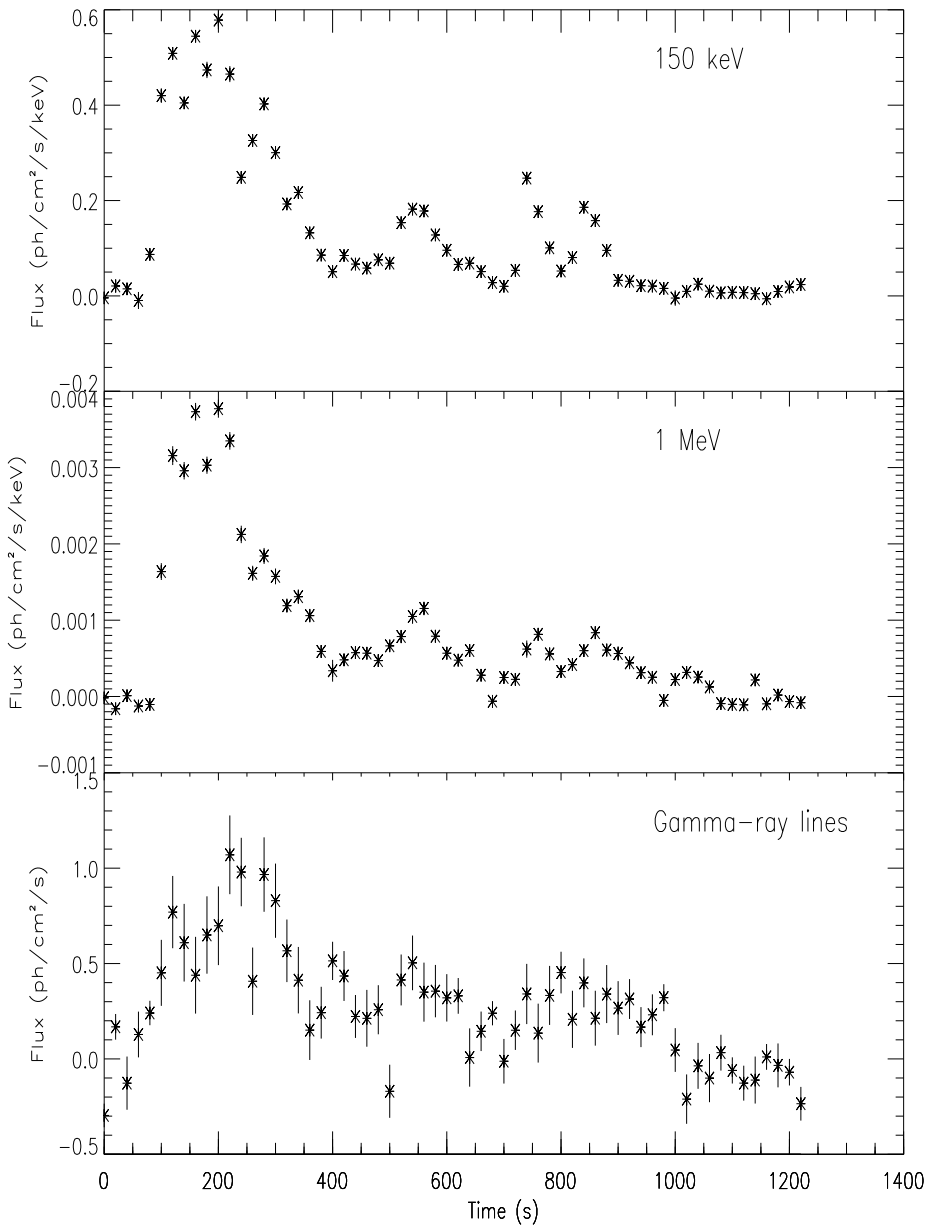


and by the spallation reactions on <sup>16</sup>O, and 1.779 MeV from <sup>28</sup>Si, 1.634 MeV from <sup>20</sup>Ne, 1.369 MeV from <sup>24</sup>Mg (with the photospheric target abundance for  $\gamma$ -ray lines). The free parameters are finally the parameter  $\alpha_0^2/L$  linked to the precipitation rate, the density, the starting time  $t_0$  and the peak time  $t_{max}$  of the injection, the amplitude of the injection and the spectral index of the energy spectrum of injected particles. Figure 7 shows the effect of the precipitation rate on the delay with respect to the injection time and on the time decay of the production of the prompt  $\gamma$ -ray line. Decreasing the value of the precipitation rate has a similar effect on the decay time as decreasing the pitch-angle scattering in the previous model.

Hulot et al. (1989), by using a trap-plus-precipitation model, were the first to calculate the relative time delay of  $\gamma$ -ray flux with respect to the hard X-ray flux. They showed that such delays strongly depend on both the trapping time of the accelerated particles and the density of the loop. In particular, they showed that the time delays of the hard X-ray and  $\gamma$ -ray line emissions observed by *ISEE-3*<sup>4</sup> and *SMM/GRS* during the SOL1980-06-07T03:22 and SOL1981-04-27T09:45 events could be explained by this model and that parameters of the particles and of the ambient model could be obtained. However, these studies were performed using the time profile of the 4–8 MeV range as a proxy for the time profiles of the nuclear lines, and no images at X-rays or  $\gamma$ -rays were used as additional constraints on the model.

A similar analysis was performed by Dauphin and Vilmer (2007) on the first  $\gamma$ -ray line event observed by *RHESSI*, SOL2002-07-23T00:35 (X4.8). Indeed, the analysis of the hard X-ray and  $\gamma$ -ray flux time evolution (Lin et al. 2003; Share et al. 2003a) showed that there is a slight delay between hard X-ray emission at 150 keV and  $\gamma$ -ray line emission. Figure 8 shows the temporal evolution of the HXR emissions at 150 keV and 1 MeV and of the  $\gamma$ -ray line time profile. These time profiles are obtained from the spectroscopic analysis presented in Share et al. (2003a). The spectral analysis is performed for successive time intervals of 20 s, and results in the fitting to observed count spectra of a model photon spectrum including a double power law for the bremsstrahlung continuum, a nuclear  $\gamma$ -ray

<sup>4</sup>International Sun-Earth Explorer-3.



**Fig. 8** Time evolution of the bremsstrahlung flux at 150 keV and 1 MeV, and of the prompt de-excitation lines, observed with a time integration of 20 s with *RHESSI* for SOL2002-07-23T00:35 (X4.8). The starting time of the figure is 00:26 UT (from Dauphin and Vilmer (2007), adapted from Share et al. (2003a))

line function made of 15 narrow and broad Gaussians (Smith et al. 2003), a neutron-capture line (Murphy et al. 2003), an  $\alpha$ - $^4\text{He}$  fusion line complex between  $\sim 400$  and  $500$  keV (Share et al. 2003a), and the solar annihilation line at 511 keV and its positronium continuum. Figure 8—adapted from Share et al. (2003a)—shows the results of this fit as a function

of time: the bremsstrahlung flux at 150 keV and 1 MeV and the nuclear de-excitation line flux. This figure shows that the hard X-ray and  $\gamma$ -ray time evolutions are roughly similar, indicating a common origin of the accelerated electrons and ions, but that for the first main peak (from 0 s to 400 s) a time delay of around 12 s is observed between the time profile at 150 keV and the  $\gamma$ -ray line time profile. There is, however, no significant delay between the time profile at 150 keV and at 1 MeV.

Dauphin and Vilmer (2007) investigated whether this delay could be reproduced by the trap-plus-precipitation model, given the additional constraint provided by the X-ray and  $\gamma$ -ray images. They found that the time profiles of both HXR and prompt  $\gamma$ -ray line fluxes could be reproduced (given that electrons and ions are injected and partially trapped in different coronal loop systems with slightly different characteristics discussed below) but they also found that the detailed X-ray and  $\gamma$ -ray time profiles could be well reproduced if the ratio of energetic electrons with respect to ions slightly varies from peak to peak during the flare. Such a variability of electron-to-ion production from peak to peak had been observed previously in flares based on spectral analysis (e.g., Chupp et al. 1993) and Dauphin and Vilmer (2007) showed here that a similar result can be found from time-delay analysis. They finally found, given this variability in the electron-to-ion ratio, that a good reproduction of the evolution of both X-ray and  $\gamma$ -ray line time profiles (see Fig. 9) was obtained if compared to electrons—ions were injected in a system of coronal loops of lower density and with a slightly larger mirror ratio leading to a slightly more efficient trapping. If we consider a similar value for the loss cone for the two coronal loops, we find that ions should propagate in slightly longer loop lengths, which is consistent with the imaging observations of this flare (see Sect. 5).

The emphasis above has been on inter-comparison of X-ray and  $\gamma$ -ray time profiles. As discussed in detail by Murphy et al. (2007), analysis of  $\gamma$ -ray measurements on their own can also provide constraints on the loop parameters, e.g., from the flare  $\gamma$ -ray line shapes and the fluence and time evolution of the 2.223 MeV neutron-capture line.

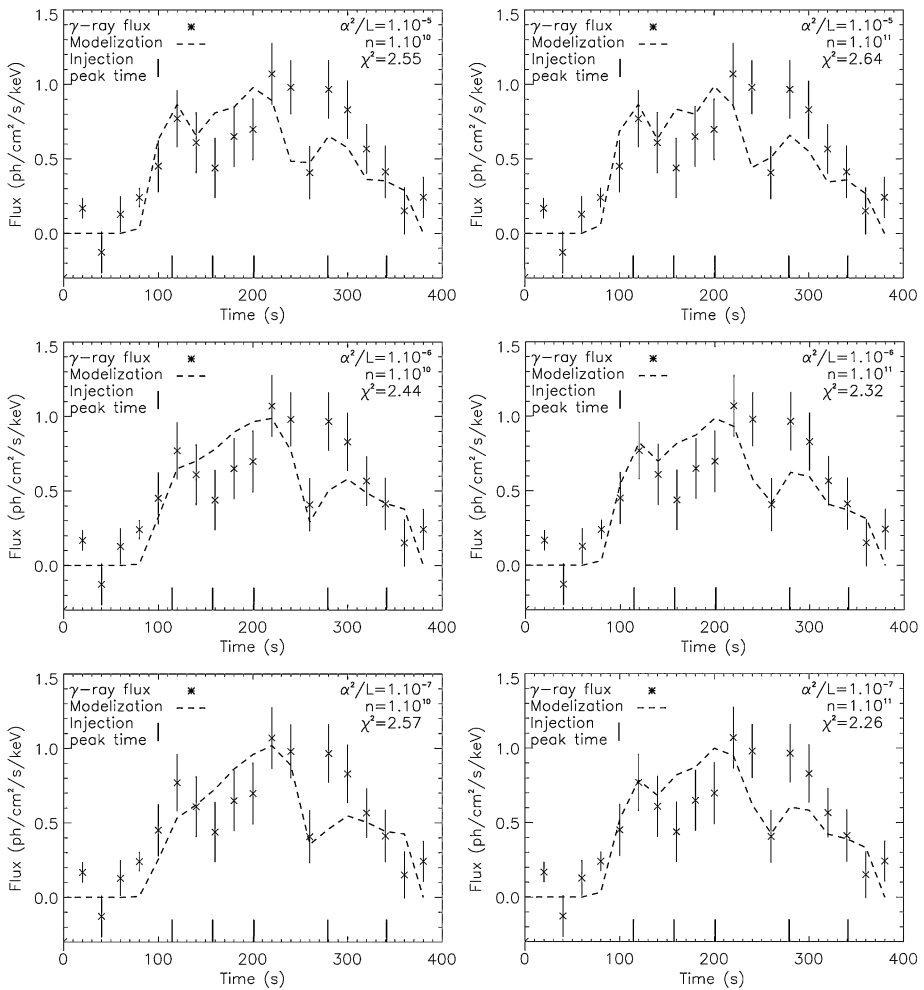
### 2.3 Characteristics of the Solar Atmosphere During Flares from $\gamma$ -Ray Line Measurements

#### 2.3.1 Atmospheric Abundances: Deduction from and Consequences for $\gamma$ -Ray Lines

The fluence in any particular de-excitation line depends on the number and energy distribution of fast particles, and on the abundance of the species that can contribute to it (either directly or via spallation reactions). A set of measured fluences in these lines thus includes information on both source chemical abundances, and the numbers and energy distributions of the exciting particles. If the energy distributions of the fast particles were known, we could deduce a set of source relative abundances from the measured fluences. Solar photospheric abundance determinations are fundamental to an enormously wide range of astrophysical topics. Determinations in the  $\gamma$ -ray source region would complement these, extending knowledge of the outer solar atmosphere. This could be particularly important at a time when 3-D radiative-transfer modeling has produced several significant revisions of solar heavy element abundances (Asplund et al. 2005), with the caveat that exceptional conditions might occur in the flaring atmosphere.

If, on the other hand, the source chemical abundances were known, we could deduce the energy distributions of protons and  $\alpha$  particles in principle. This depends on the extent to which the various cross-sections have different dependences on fast particle energy (Toner and MacKinnon 2004). In practice neither of these sets of variables is known with much





**Fig. 9** Time evolution of the observed and computed  $\gamma$ -ray flux derived for the RHESSI SOL2002-07-23T00:35 (X4.8) flare for different parameters of the trap plus precipitation model (from Dauphin and Vilmer 2007)

reliability, and both the abundances and the parameters of the energy distributions should be deduced together. To date, the *SMM*/GRS work of Murphy et al. (1991) remains the only published study where source abundances and particle energy distributions are determined together. Other studies have determined particle distributions using, e.g., coronal or photospheric abundances (Ramaty et al. 1995), further deciding between these possibilities using goodness-of-fit tests. Trends in line fluence ratios across many events have been used to make at least qualitative statements (Share and Murphy 1995); with many events one can attempt to disentangle the separate influences of particle distributions and abundances. Target abundances may be determined non-parametrically or as a choice among several alternative sets. Ion energy distributions are always represented by assumed analytical forms, however (e.g., power-law or Bessel function  $K_2$  in momentum) whose parameters are determined as best fits to data. From these various studies, certain general statements may be made (see

below)—always noting that these might be subject to change via future revisions of nuclear cross-sections or refinements of data analysis techniques. We now survey some results of these studies.

Abundances of several species are enhanced compared to standard photospheric values. As is found using other measures of coronal abundances (e.g., Meyer 1993), enhancements may be ordered by first ionization potential (FIP) of the species. Low-FIP elements (Mg, Si, Fe) generally show enhancements by an amount that varies from one event to the next but may be as great as 3–4. There is a definite “FIP effect,” with low-FIP elements showing more variability than high. At least in *SMM*/GRS data, the 1.63 MeV line from  $^{20}\text{Ne}$  needs both a  $^{20}\text{Ne}$  enhancement ( $\text{Ne}/\text{O} = 0.25$ , rather than the photospheric value of 0.15) and a steeply falling ion energy distribution that can exploit its low threshold for excitation by protons (Share and Murphy 1995). Although an enhanced Ne abundance in the solar interior might have helped with certain problems in understanding helioseismology data (Drake and Testa 2005), there is no convincing evidence for such an enhancement at other wavelengths (Schmelz et al. 2005). It now seems likely that we are identifying some peculiarity of the flaring atmosphere rather than the normal state of affairs in the non-flaring Sun.

Rather than a complete fit of the whole spectrum, one often tries to make progress using ratios of pairs of line fluences, for instance the ratio mentioned in Sect. 2.2.5 of fluences in the 1.63 and 6.13 MeV lines. Let  $\Phi_\epsilon$  stand for the measured fluence ( $\text{cm}^{-2}$ ) in a line at photon energy  $\epsilon$  (keV). Then the assumed abundances of the emitting species play a crucial role. With a photospheric or a coronal abundance ratio for neon and oxygen, one can only accommodate the observed values of  $\Phi_{6.13}$ ,  $\Phi_{1.63}$  and  $\Phi_{0.4-0.5}$  by allowing protons and  $\alpha$ s to have significantly different energy distributions (Toner 2004; Toner and MacKinnon 2004). Because the true degree of enhancement of  $^{20}\text{Ne}$  is uncertain, the proton and  $\alpha$  energy distributions are correspondingly uncertain. This uncertainty adds to that introduced by the different energy-dependence of the cross-sections for excitation of the lines by protons and  $\alpha$ s. For example, assuming  $\alpha/p = 0.1$  among the fast particles,  $\Phi_{6.13}/\Phi_{1.63}$  for SOL1981-04-27T09:45 (X5.5) implies a power-law energy spectral index  $\delta$  roughly in the range 4.3–4.8 if  $\text{Ne}/\text{O} = 0.15$ , but 3.6–4.1 if  $\text{Ne}/\text{O} = 0.25$  (Ramaty et al. 1995), the former value believed appropriate to the photosphere (Asplund et al. 2005). Ratios involving the 2.223 MeV line give a valuable further constraint in the face of this uncertainty. All target species can contribute to free neutron production so some uncertainty in the abundance of any one has much less impact on deductions. On the other hand, the intensity of the 2.223 MeV line depends on other quantities that must be constrained, if at all, by other means: pitch-angle distribution and magnetic geometry in which the fast ions move.

Usually one needs to integrate over the whole of a flare to get a  $\gamma$ -ray spectrum of adequate statistical quality. There have, however, been a few attempts to study the time development of the  $\gamma$ -ray spectrum. Murphy et al. (1997) found evidence for an increase with time of the abundances of low-FIP elements relative to high-FIP ones, from the *CGRO*/OSSE data of SOL1991-06-04T03:37 (X12.0). Evidence for a similar trend was found in *RHESSI* data for the SOL2002-07-23T00:35 (X4.8) by Shih et al. (2003). Share and Murphy (2006) additionally show such a trend in the flare of SOL2003-11-03T09:55 (X3.9). It is interesting that a similar trend is found in data from three different flares, involving two completely different instruments, although the ubiquity or otherwise of this effect remains to be shown. Assuming, unjustifiably, that this effect proves commonplace we may make some preliminary comments. We can imagine at least three reasons why  $\gamma$ -ray source region abundances might change (see also MacKinnon 2006). First, abundances might vary with position in an active region, and the regions of fast ion precipitation change as the flare progresses. It

is not at first easy to see why this would produce a systematic change in the ratio of low-FIP to high-FIP elements, however. Second, abundances may well vary with height in the atmosphere. Even if the atmosphere remains static as the flare progresses, an ion energy distribution evolving in time (e.g., hardening) would sample an evolving range of atmospheric heights and thus relative abundances. Third, relative abundances might indeed evolve in the source region during the flare (e.g., Winglee 1989).

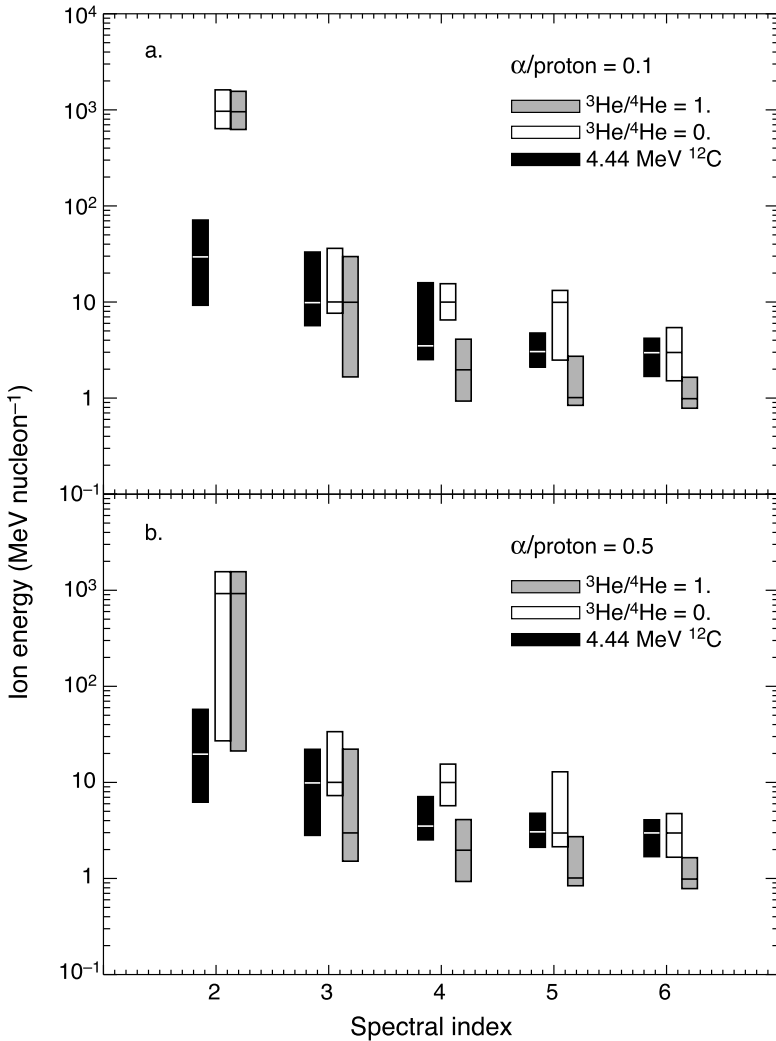
Kiener et al. (2006) studied the *INTEGRAL* data from the SOL2003-10-28T11:10 (X17.2) flare, noting a change in time of the relative intensities of the 4.44 MeV  $^{12}\text{C}$  and 6.13 MeV  $^{16}\text{O}$  lines. With line shape data providing additional constraints, their preferred explanation involves a change in time of the  $\alpha/p$  fast ion abundance ratio, rather than the abundances of the target species. This example shows the importance of the extra information obtainable from line shapes.

The time development of the 2.223 MeV line gives a quite different sort of constraint on the abundance of  $^3\text{He}$ . Indeed, after thermalization (typical duration around 100 s), the free neutrons produced in nuclear reactions are captured in the solar photosphere in two competitive processes: radiative capture on protons to form deuterium (and the 2.2 MeV line) and non-radiative capture on  $^3\text{He}$  ( $^3\text{He}(n, p)^3\text{H}$ ). This method was first described and employed by Wang and Ramaty (1974). They showed that the greater the  $^3\text{He}$  abundance, the more rapid the decay of the 2.2 MeV line. The determination of  $^3\text{He}/\text{H}$  was thereafter done on a few flares observed by *HEAO-1* (Hudson et al. 1980), *SMM/GRS* (Chupp et al. 1981; Hua and Lingenfelter 1987a), *GRANAT/PHEBUS* (Trotter et al. 1993), *CGRO/OSSE* (Share and Murphy 1998), *CGRO/EGRET* (Dunphy et al. 1999; Dunphy 1999), *CGRO/COMPTEL* (Rank et al. 2001) and *Yohkoh/GRS* (Yoshimori 1999a); see, e.g., Mandzhavidze and Ramaty (2000) for a review of observations before the *RHESSI* era. An upper limit on the photospheric  $^3\text{He}/\text{H}$  of  $1.6 \pm 0.1 \times 10^{-5}$  was found in the review of Mandzhavidze and Ramaty (2000). The analysis of the time profile of the 2.223 MeV line was also achieved for SOL2003-07-23T00:35 (X4.8) observed with *RHESSI* (Murphy et al. 2003) to get a measurement of  $^3\text{He}/\text{H}$ . It is one of the factors included in the analysis of Naiman et al. (2008).

### 2.3.2 Conditions in the Positron Annihilation Region

Positron production by flare fast ions has been studied in detail by Kozlovsky et al. (1987), Murphy et al. (1987) and Kozlovsky et al. (2004). Positrons may be produced via the decay of radioactive daughter nuclei, beta decay of excited states of target nuclei, or via  $\pi^+$  production, e.g., in  $p(p, n\pi^+X)p'$ . In the first two cases cross-sections have thresholds mostly in the 1–10 MeV energy range, while  $\pi^+$  production starts at 200–300 MeV/nucleon. Thus positron production, slowing down and annihilation will occur over a wide range of heights and the resulting  $\gamma$ -rays potentially carry information on deep layers of the atmosphere.

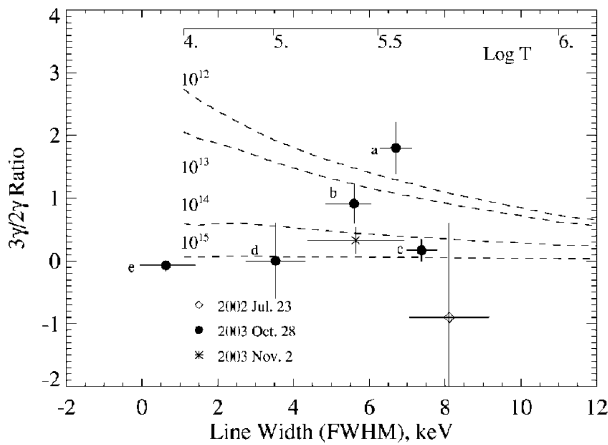
The very broad energy range of ions contributing to positron production is illustrated in Fig. 10 from Murphy et al. (2007). Effective accelerated ion energies are shown for the production of positrons for accelerated  $^3\text{He}/^4\text{He} = 0$  (white boxes) and 1 (grey boxes) and for accelerated  $\alpha/\text{proton} = 0.1$  (panel a) and 0.5 (panel b). For very hard spectra dominated by protons, the effective ion energies range from 0.1 to  $>1$  GeV/nucleon because the positrons result mainly from very high-energy reactions producing charged pions. At the opposite extreme, positron production from soft energy distributions rich in  $\alpha$ s and  $^3\text{He}$  is dominated by ions of 1–15 MeV/nucleon and even includes a significant contribution from  $^3\text{He}$  above  $\sim 1$  MeV/nucleon. Note that the effective energies shown in Fig. 10 are for the production of positrons. The escaping 0.511 MeV annihilation photons can be significantly attenuated if the positrons are produced deep in the solar atmosphere. Pion production can be very deep



**Fig. 10** Effective accelerated ion energies for production of positrons as a function of spectral index for accelerated <sup>3</sup>He/<sup>4</sup>He = 0 (white boxes) and 1 (grey boxes). The effective energy ranges are the 50% yield range as defined in Sect. 2.2.5. Panel (a) is for accelerated  $\alpha$ /proton = 0.1 and panel (b) for 0.5. Also shown are the effective energies for the 4.438 MeV <sup>12</sup>C line (black boxes) from Fig. 6 (from Murphy et al. 2007). Reproduced by permission of the AAS

since the high energy ions responsible have very long ranges. As a result, even for very hard spectra, the annihilation photons that escape can be mainly from decay of radioactive nuclei rather than pions. Such nuclei are produced by ions with energies that are much lower than those indicated in the figure.

Positron annihilation and consequent radiation are dealt with in great detail by Murphy et al. (2005). Positrons must slow down and thermalize to contribute to 0.511 MeV radiation. They may annihilate directly on free electrons, or via positronium formation. Positronium formation can involve both free or atomic electrons, in the latter case via charge exchange re-



**Fig. 11** *RHESSI* measurements of the  $3\gamma/2\gamma$  ratio vs. 511 keV line width for three flares. Time intervals for SOL2003-10-28T11:10 (X17.2) are: (a) 11:06:20–11:08:20 UT, (b) 11:08:20–11:10:20 UT, (c) 11:10:20–11:16:20 UT, (d) 11:16:20–11:18:20 UT, and (e) 11:18:20–11:30:20 UT. The SOL2003-11-02T17:25 (X8.3) measurement was made between 17:16 and 17:26 UT, when the line was broad. The data point when the line was narrow is consistent with point (e). The SOL2002-07-23T00:35 (X4.8) measurement was integrated over the entire flare. The temperature scale and curves showing the calculated  $3\gamma/2\gamma$  ratio vs. 511 keV line width for different densities are for a fully ionized medium (from Share et al. 2004). Reproduced by permission of the AAS

actions. Positronium in turn may exist as para-positronium (net spin 0) or ortho-positronium (net spin 1). Para-positronium annihilates to give two photons in the 0.511 keV line ( $2\gamma$  mode). To conserve spin, ortho-positronium must annihilate producing three photons, at energies  $\leq 0.511$  MeV ( $3\gamma$  mode). The lifetimes of the two spin states are different, so the proportions that annihilate (i.e., the ratio of the two-photon (line) and three-photon (continuum) spectral components) depend on the rate of collisional destruction and thus on ambient density.

Positrons in an ionized medium of temperature  $T$  (K) produce a line of FWHM (full width at half maximum) width  $\sigma$  (keV) (Murphy et al. 2005)

$$\sigma = 0.011T^{1/2}. \quad (2.5)$$

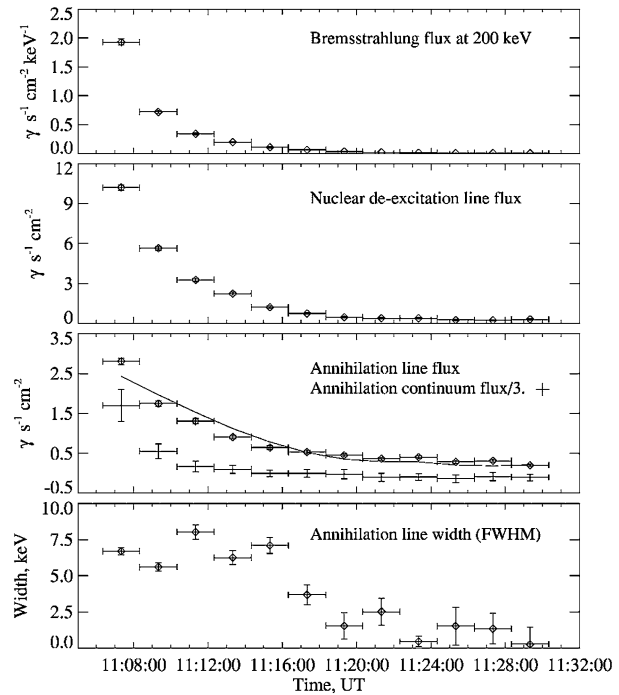
For low temperatures an additional, broader component may be discriminated, from positronium formed via charge exchange in flight. Equation (2.5) is valid for 0.511 MeV line emission formed via both direct annihilation and para-positronium formation on free electrons, but not for positronium formation via charge exchange with atoms or ions. Thus the ionization state of the medium also influences the shape and width of the line.

In summary, then, the shape of the line and the relative intensities of the  $2\gamma$  and  $3\gamma$  components of the annihilation spectrum include information on the temperature, density and ionization state of the positron-annihilation region

*RHESSI* has observed 0.511 MeV line emission from the flares SOL2002-07-23T00:35 (X4.8), SOL2003-10-28T11:10 (X17.2), SOL2003-11-02T17:25 (X8.3) and SOL2005-01-20T07:01 (X7.1) (Share et al. 2003a, 2004; Murphy et al. 2005). During the greater part of these flares, until quite late times, the width of the line was determined to be 4–8 keV (see Fig. 11).

The SOL2003-10-28T11:10 flare provided the best-observed 0.511 MeV line. For the first 10 minutes of the flare its width is between  $\sim 5$  and 8 keV. Equation (2.5) then im-

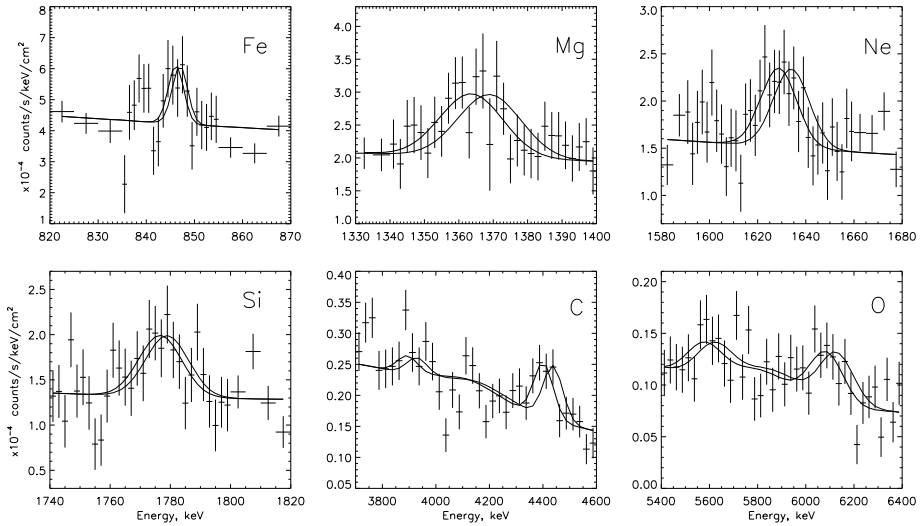
**Fig. 12** Time histories of the bremsstrahlung, total nuclear de-excitation line, annihilation line and positronium continuum fluxes, and the width of the annihilation line during SOL2003-10-28T11:10 (X17.2) (from Share et al. 2004). Reproduced by permission of the AAS



plies an ambient temperature of  $\sim 5 \times 10^5$  K for a width  $\sim 8$  keV (see Fig. 12). The measurements of the positronium continuum to line ratio ( $3\gamma/2\gamma$  ratio) implies an ambient density in the range  $\sim 10^{13-15}$   $\text{cm}^{-3}$  (see above) (Murphy et al. 2005). In this initial phase the positron annihilation region appears characterized by an unexpected combination of chromospheric density and transition-region temperature (Share et al. 2004; Murphy et al. 2005). (Note that the similarly broad line found in the SOL2002-07-23T00:35 (X4.8) carries similar implications (Share et al. 2004)). The line then narrows in  $\sim 2$  min, settling down to a width of  $\sim 1$  keV for the remaining 12 min of the flare (Fig. 12). The best explanation of the late-time narrow line is in terms of a medium at a temperature of  $\sim 5000$  K, but with a relatively high degree of ionization ( $\sim 20\%$ ), to suppress the broader feature that results from positronium formation in flight (Fig. 11).

The line in SOL2003-11-02T17:25 (X8.3) is more consistent with a “normal” solar atmosphere, specifically with the conditions in the layer of the Vernazza et al. (1981) model C atmosphere at which the temperature is 5000 K. So far the 0.511 MeV line shapes have been calculated for single regions with homogeneous conditions. As we see, these yield significant insight into at least average annihilation region conditions. There remains a need for such calculations to take account of the broad range of depths over which positrons will be produced, and the consequent wide range of conditions in which they will annihilate.

The conditions found for SOL2003-10-28T11:10 (X17.2) are particularly surprising, unlike those found at any layer of existing models for quiet-Sun or flaring atmospheres. Raymond et al. (2007) study lines of O VI UV lines and X-ray emission from SOL2002-07-23T00:35 (X4.8). The density and temperature implied by the positron annihilation line would have to apply only in a very narrow layer,  $\sim 100$  m, to be consistent with the measured O VI line strengths. Even if such a narrow layer could be produced, bearing in mind the range of heights over which fast electrons would deposit energy, we would also have



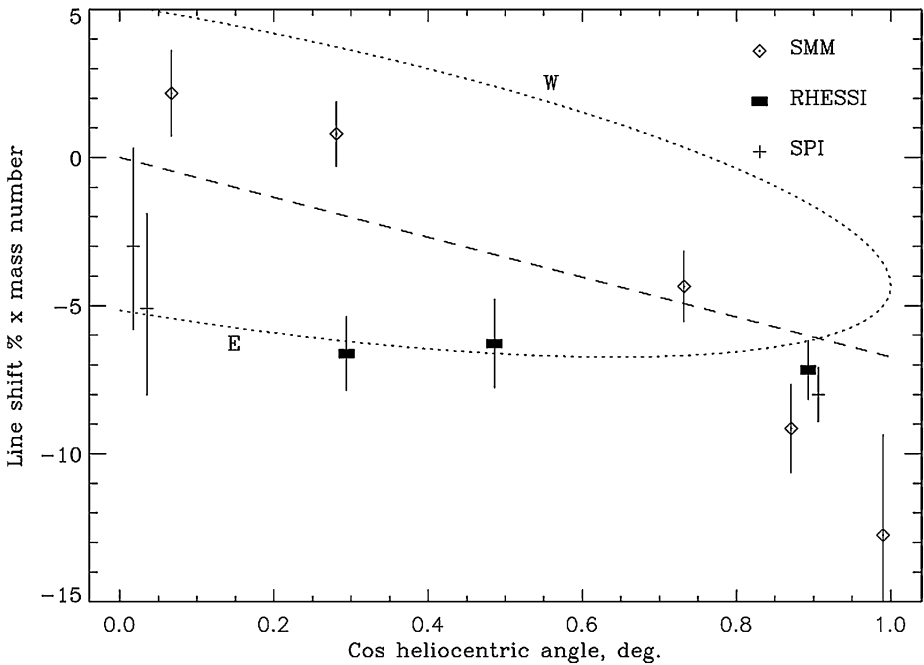
**Fig. 13** *RHESSI* background-subtracted count spectra for SOL2002-07-23T00:35 (X4.8). Each panel is labeled with the element primarily responsible for the line shown. The carbon and oxygen lines also show the secondary peak from the escape of a 511 keV positron-annihilation photon, which also contains information on the line shape. The *thick curve* shown in each panel is the Gaussian fit with a redshift of respectively 0.11% for the Fe line, 0.40% for the Mg line, 0.32% for the Ne line, 0.12% for the Si line, 0.79% for the C line and 0.58% for the O line plus the underlying bremsstrahlung continuum and broad lines, convolved with the instrument response. The *thinner line* is the same fit forced to zero redshift for comparison. The *error bars* are one  $\sigma$  from Poisson statistics (from Smith et al. 2003). Reproduced by permission of the AAS

to find some mechanism which would localize most positron annihilations there. A multi-wavelength study of this flare (Schrijver et al. 2006) further underlines the difficulty of accounting for the positron annihilation line width.

### 2.3.3 Inclination of Magnetic Field Lines

With the unprecedented spectral resolution in the  $\gamma$ -ray domain provided by *RHESSI*, Smith et al. (2003) were able to resolve for the first time the shapes of several of the strongest flare  $\gamma$ -ray lines in SOL2002-07-23T00:35 (X4.8), determining line widths and Doppler shifts (Fig. 13) (for a complete discussion of the interpretation of line shapes, see Sect. 2.6). All lines were found to be redshifted by amounts that decrease with increasing target species mass, as expected for kinematic recoil. The absolute values of these redshifts were larger than expected for a flare at S13E72, however, on the assumption of field lines normal to the solar surface. Smith et al. (2003) thus suggested that field lines might be inclined to the vertical, in this flare at least by  $\sim 40^\circ$ . The alternative explanation, that fast ions are highly beamed, appears to be inconsistent with deductions from the  $\alpha$ - $\alpha$  line complex in the 0.4–0.5 MeV range (Share et al. 2003b), as well as potentially raising difficult questions of velocity space stability (Tamres et al. 1989). Systematic field line tilts to the vertical have been suspected in the past, on the basis of Zeeman split lines formed at different heights (Wiehr 1978). MacKinnon and Brown (1990) had also suggested such a systematic tilt because of an apparent asymmetry in the azimuthal distribution of events visible at photon energies  $>10$  MeV. Field lines will fan out with altitude as a result of pressure balance (Gabriel 1976) but this would produce only a broadening, not a systematic red or blue shift.





**Fig. 14** Doppler shifts of  $^{12}\text{C}$  and  $^{16}\text{O}$  line energies from rest, multiplied by the atomic mass of the recoiling nucleus. *Dashed line*: expected Doppler shift from a simple model of 10 MeV protons incident on ambient solar atmosphere nuclei in a downward isotropic beam at  $90^\circ$ . *Dotted lines*: expected shifts if the protons are incident along magnetic field lines tilted at  $50^\circ$  to the horizontal. If this is the explanation for the *RHESSI* point at  $\cos \theta = 0.29$  towards the east limb, then the Doppler shifts should follow the branches labeled “E” and “W” to the east and west of the Sun’s center respectively. Sources of data points are from *SMM* (19 measurements in bins of heliocentric angle; Share et al. 2002), *RHESSI* measurements for the flares SOL2002-07-23T00:35, SOL2003-10-28 and SOL2003-11-02 (Share and Murphy 2006), and *INTEGRAL/SPI* measurements for the flares SOL2003-10-28 (Kiener et al. 2006), SOL2003-11-04T19:53 and SOL2005-09-07T11:10 (Harris et al. 2007); from Harris et al. (2007)

Harris et al. (2007) studied *INTEGRAL* spectra of SOL2003-11-04T19:53 (X17.4) and SOL2005-09-07T09:52 (X17.0). These took place on the west and east limbs respectively. Systematically tilted loops would produce a systematic difference in Doppler shifts: the  $40^\circ$  tilt suggested by Smith et al. (2003) would imply blueshifted lines from the west limb. The two flares studied both display (statistically weak) evidence for redshifts, but none for blueshifts. Thus it appears that both flares plus SOL2002-07-23T00:35 (X4.8) involve field lines oriented predominantly away from the observer, but that there is no evidence so far for a systematic tilt in any preferred sense (Fig. 14). The small number of flares renders this study preliminary. At the heart of the interpretation is a picture of unidirectional field lines, either normal to the solar surface or all tilted at a single angle to the vertical, instructive but very simple. Major  $\gamma$ -ray flares originate from complex active regions and will undoubtedly involve a broad distribution of magnetic field directions.

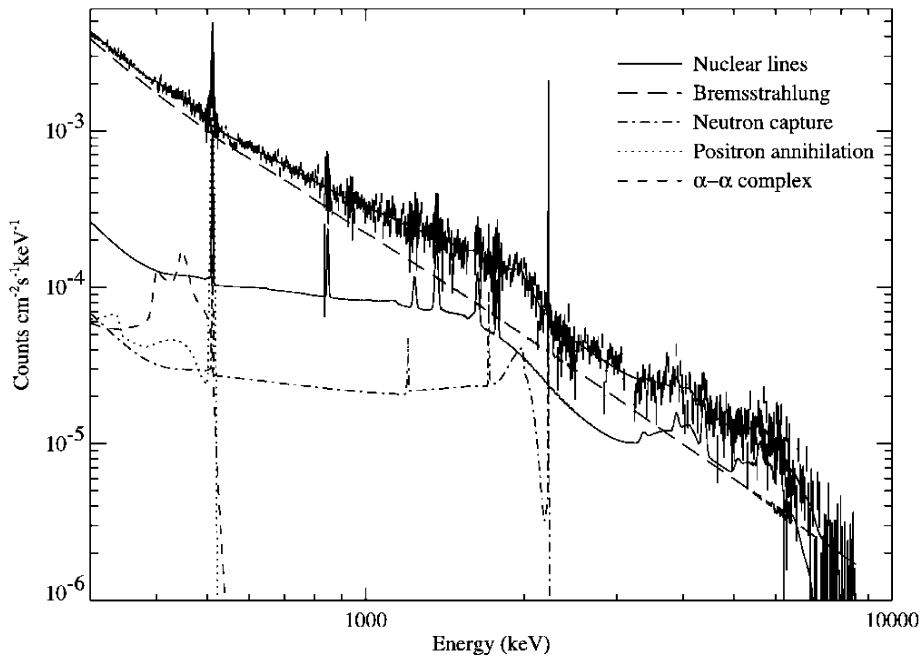
### 2.4 Narrow Lines and Ion Energy Distribution

Since the first detection of solar  $\gamma$ -ray lines in 1972, many solar  $\gamma$ -ray line flares have been observed with detectors aboard *SMM*, *Hinotori*, *GRANAT*, *CGRO* and *Yohkoh*. The

analysis of these observations have led to quantitative analysis for more than 20  $\gamma$ -ray line events. Apart from information on the solar atmospheric elemental abundances which have been deduced from the analysis of narrow  $\gamma$ -ray lines (see previous sections), energy spectra of protons have been deduced for 19 *SMM*/GRS flares (Share and Murphy 1995; Ramaty et al. 1995) and for one *CGRO*/OSSE flare (Murphy et al. 1997). Each line is characterized by energy-dependent cross-sections for excitation by protons and by  $\alpha$  particles. Thus the measured fluence in each line provides a sum of energy-weighted measures of the numbers of protons and  $\alpha$ s (e.g., Ramaty 1986), above the lesser of the threshold energies for proton and  $\alpha$  particle excitation. The measured fluences in more than one line contain information on the energy distributions of protons and  $\alpha$ s. The 1.63 MeV cross-section of  $^{20}\text{Ne}$  has a lower cross-section than the other de-excitation lines (Share and Murphy 1995), so the ratio of the fluences in the lines at 1.63 and 6.13 MeV, for instance, gives a measure of fast ion spectral hardness, representing a variable range of ion energies of around 1–20 MeV (see Sect. 2.2.5). Higher ion energies, on average, are needed to liberate neutrons in nuclear collisions so the ratio of the 2.223 MeV line to one or more of the de-excitation lines similarly gives a measure of spectral shape. The authors listed above assumed the power-law form for ion energy distributions and deduced the values of energy power-law spectral index from either or both of these measures, for the 20 flares observed by *SMM* or *CGRO*. The measured ratios imply that the accelerated ion proton spectra should extend as unbroken power laws down to at least about 2 MeV/nucleon if a reasonable ambient Ne/O abundance ratio is used, i.e., in agreement with measurements of the Ne/O abundance ratio in the corona (Ramaty et al. 1995). The spectrum deduced is thereafter used to estimate the energy contained in accelerated protons above 1 MeV. This last determination is, however, largely dependent on the value of the ambient Ne/O abundance ratio and also on the composition of accelerated particles, in particular the ratio of energetic He nuclei to energetic protons ( $\alpha/p$ ) (see Ramaty et al. 1995).

Four  $\gamma$ -ray line events so far observed with *RHESSI* provide new opportunities for such analyses: SOL2002-07-23T00:35 (X4.8) (see Fig. 15) (see Lin et al. 2003; Smith et al. 2003; Share et al. 2003a), SOL2003-10-28T11:10 (X17.2) (Share et al. 2004); SOL2003-11-02T17:25 (X8.3) and SOL2005-01-20T07:01 (X7.1) (see Share and Murphy 2006, for a review). *RHESSI* has for the first time the energy resolution necessary to resolve all the  $\gamma$ -ray lines, except the intrinsically narrow 2.223 MeV line, and to determine the detailed line shapes expected from Doppler shifts, thus allowing deduction of velocity distributions of the interacting energetic ions (Smith et al. 2003). The comparison of fluxes in the  $^{20}\text{Ne}$  line at 1.63 MeV and of the  $^{12}\text{C}$  and  $^{16}\text{O}$  lines at 4.44 and 6.13 MeV was performed for these four flares to provide information on the proton spectrum. Apart from SOL2002-07-23T00:35, for which the proton spectral slope was found to be  $\sim 3.5$  (Lin et al. 2003), the other events have been reported to have much harder slopes ( $\sim 2.5$ ) (Share and Murphy 2006), harder than the average ( $\sim 4.3$ ) measured previously for the 19 *SMM* flares. New analyses of the most recent events are currently being undertaken using the improved nuclear continuum modeling developed in Murphy et al. (2009), which could lead to softer proton spectra than was estimated in Share and Murphy (2006).

There are also well-resolved *INTEGRAL* spectra for three flares: SOL2003-10-28T11:10 (X17.2 (Kiener et al. 2006), SOL2003-11-04T19:53 (X17.4) and SOL2005-09-07T09:52 (X17.0) (Harris et al. 2007). The proton spectral index was deduced for these events from the ratio of the 2.2 MeV line to the sum of the 4.44 and 6.13 MeV lines. Values of the power-law index in the range [3.5, 4] were found. For SOL2003-10-28T11:10 (X17.2), observed both by *RHESSI* and *INTEGRAL*, the difference in the deduced power-law indices may result from the different methods used to infer the spectral index from observations. New analysis



**Fig. 15** RHESSI  $\gamma$ -ray count spectrum for SOL2002-07-23T00:35 (X4.8). The lines show the different components of the model used to fit the spectrum (from Lin et al. 2003). Reproduced by permission of the AAS

using improved nuclear line modeling (Murphy et al. 2009) could help to understand the apparent existing discrepancy.

## 2.5 Alpha Particles

Both protons and  $\alpha$ s excite most of the strong de-excitation lines. Definitive information on the relative numbers of protons and  $\alpha$ s must be obtained by determining fluences of lines to which only one or the other species contribute. Information on the  $\alpha/p$  ratio had been deduced for five flares observed with *SMM* (Share and Murphy 1998; Mandzhavidze et al. 1999) from the fluence ratio of two lines: the prompt Fe line at 0.847 MeV which is produced by the interaction of accelerated protons and  $\alpha$ s on ambient iron, and a pure  $\alpha$  line at 0.339 MeV which only results from the interaction of energetic  $\alpha$  particles on iron, producing an excited state of nickel. It was found by Mandzhavidze et al. (1999) that for these five flares  $\alpha/p$  exceeds the standard value of 0.1 and can even reach 0.5. Nuclear interactions of accelerated  ${}^3\text{He}$  with ambient  ${}^{16}\text{O}$  result in three  $\gamma$ -ray lines at 0.937, 1.04 and 1.08 MeV. While the fluence of the line at 0.937 MeV could be determined for a few flares observed by *SMM*/GRS and *CGRO*/OSSE, the other two lines cannot be separated from  $\alpha$  lines at 1.05 and 1.00 MeV (Share and Murphy 1998). These lines combine to yield to an unresolved feature centered at 1.02 MeV. Using the information from this unresolved feature and from the line at 0.937 MeV, an estimate could be obtained of the ratio of accelerated  ${}^3\text{He}$  with respect to accelerated  ${}^4\text{He}$ . In 7 flares this led to an enhancement of this ratio (0.1 to 1) with respect to coronal values (Mandzhavidze et al. 1999). In these analyses it was assumed that all accelerated species have the same energy distributions. As will be discussed

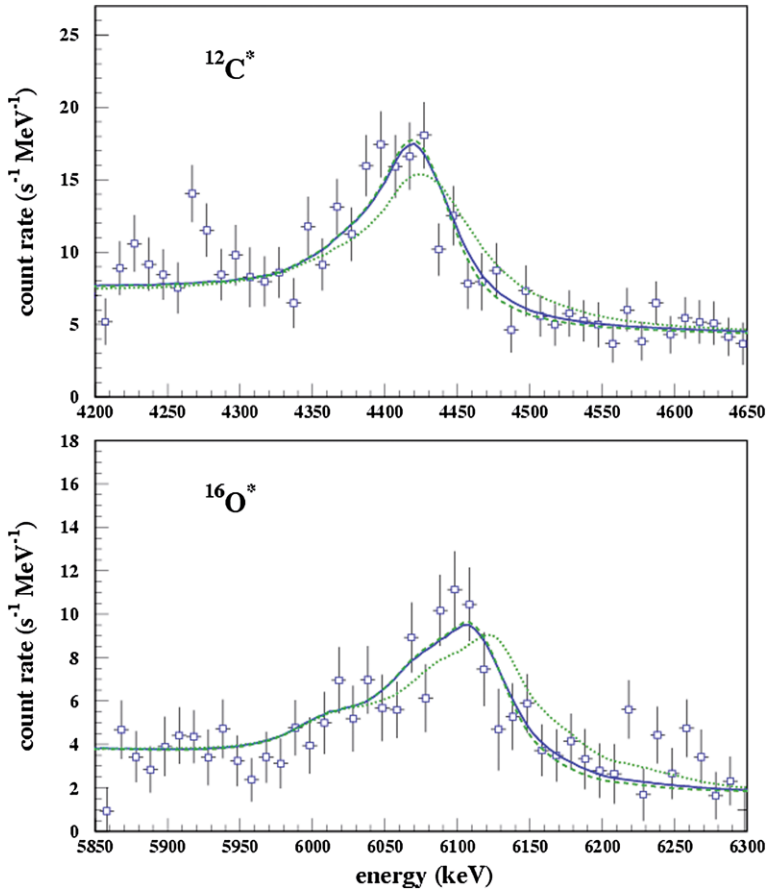
in Sect. 2.7, Toner and MacKinnon (2004) attempted to show how line fluences might be analyzed without this assumption. Finally, observations with good energy resolution help to reach stronger conclusions on these issues, and the additional information from  $\gamma$ -ray line shapes also contributes, as discussed in the next section, to the determination of the  $\alpha/p$  ratio.

## 2.6 Angular Distributions of Ions and $\alpha/p$ Ratio as Deduced from Narrow Line Shapes

Profiles of narrow  $\gamma$ -ray lines can be used to derive the angular distributions of the emitting ions (in the interaction site) and of the accelerated ions, if the emission mechanisms are coupled with transport models. The nuclear excited states produced by collisions between accelerated and ambient particles have indeed very short lifetimes so that the decay  $\gamma$ -ray is emitted with a Doppler shift due to the recoil from the original collision. Furthermore, the collisions with the heavier  $\alpha$  particles will produce greater recoil and should produce a broad “red” tail to the line shape. Fitting this tail, i.e., looking at the line shape, can constrain the  $\alpha/p$  ratio independently of line fluxes and ratios. Accelerated nuclei heavier than He also produce flare  $\gamma$ -ray lines but they are largely broadened and merge into a quasi-continuum  $\gamma$ -radiation (see Sect. 2.11). The shape of the narrow  $\gamma$ -ray lines ultimately depends on the angular distribution and spectrum in the interaction site, the assumed  $\alpha/p$  ratio, and the viewing angle of the observer (see, e.g., Ramaty and Crannell 1976; Ramaty et al. 1979; Murphy et al. 1988; Werntz et al. 1990; Lang and Werntz 1991; Kiener et al. 2001; Murphy et al. 2007).

Before the launch of *RHESSI* and *INTEGRAL*, line redshifts and widths had been studied for 19 flares using data from *SMM* (Share and Murphy 1995; Share et al. 2002). Measurements of energies and widths of the strong flare  $\gamma$ -ray lines of C, O and Ne were performed as a function of heliocentric angle using data with moderate spectral resolution provided by *SMM*. Flares were grouped in five bins in heliocentric angle, with analysis performed on these sums of flares located in the same heliocentric interval (see Fig. 14). Redshifts of the Ne, C and O lines of the order of 1% are found for flares close to the disk center but no redshifts are found for flares close to the limb. The mean widths of the de-excitation lines were of the order of 3% and did not exhibit any significant variation with heliocentric longitude. It should be noted that the line shapes result from the  $\gamma$ -ray spectral analysis and are thus not completely independent of the way the analysis is performed. The observed redshifts are compared with predictions of line shapes in the case of angular distributions in the interacting sites being represented by a downward beam, a fan beam, and a downward or upward isotropic distribution. Assuming a mean spectral index for ions of  $\sim 4.2$ ,  $\alpha/p = 0.3$  and  $\text{Ne/O} = 0.25$ , Share et al. (2002) concluded that the measured redshifts as a function of heliocentric angle are not consistent with beams in the interacting site but are rather consistent with a broad angular distribution in the downward direction. These angular distributions are of course descriptive of the interaction sites and should be related to the angular distributions in the acceleration region itself by developing transport models (see Murphy et al. 2007).

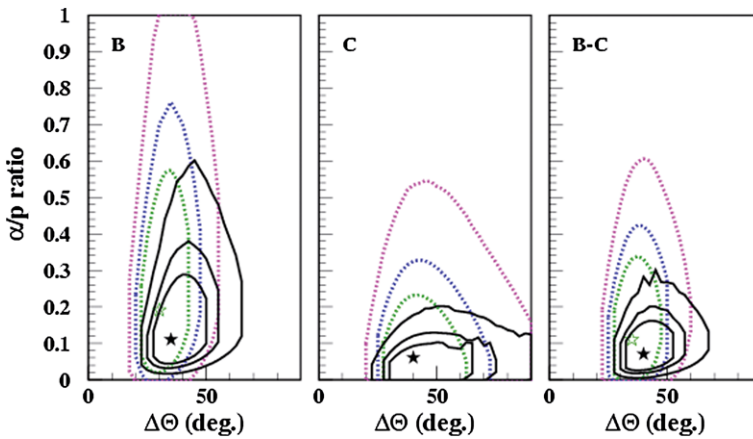
Line widths were clearly observed for the first time in the flare SOL2002-07-23T00:35 (X4.8) observed with *RHESSI* (Smith et al. 2003; Share et al. 2003a) (see Fig. 13). It was found that redshifts varied as expected with the mass of the target species, but were larger than expected for line production by vertically precipitating ions in a flare at this location. The large shifts obtained rather suggest that the magnetic loops along which ions propagate are tilted with respect to the vertical (see Sect. 2.3). Two other  $\gamma$ -ray line flares have been observed with *RHESSI* for which line shapes have been analyzed



**Fig. 16** Observed and calculated line shapes of the 4.44 and 6.13 MeV ambient  $^{12}\text{C}$  and  $^{16}\text{O}$  de-excitation lines observed by *INTEGRAL*/SPI for SOL2003-10-28T11:10 (X17.2). The *dashed line* represents the calculated line shape for a downward isotropic distribution. The *full* and *dotted lines* represent the calculated line shapes for the distribution computed with pitch-angle scattering as in Murphy et al. (2007) for  $\lambda = 30$  (*full line*),  $\lambda = 300$  (*dotted line*) (from Kiener et al. 2006)

(SOL2003-10-28T11:10 (X17.2) and SOL2003-11-02T17:25 (X8.3)) (see, e.g., Gan 2005; Share and Murphy 2006). The SOL2003-10-28T11:10 (X17.2) event was also observed at high spectral resolution with the *INTEGRAL*/SPI spectrometer (Gros et al. 2004; Kiener et al. 2006), which provided high-resolution data for the 4.44 MeV  $^{12}\text{C}$  and 6.13 MeV  $^{16}\text{O}$  lines (see Fig. 16). The comparison of the results of detailed calculations of line shapes to the observations places strong constraints on the  $\alpha$ /p ratio (Kiener et al. 2006). In particular, the observed line width is inconsistent with an interpretation where too many  $\alpha$  particles relative to the number of protons would be produced or otherwise the lines would be too broad when compared with the observations (Fig. 16). However, the line shapes depend on many parameters: the angular distribution of the interacting ions, the spectral index of the energetic ions, and the  $\alpha$ /p ratio; these cannot be determined independently so the analysis results in extended regions of allowed parameter space.

Using a spectral index between 3 and 4 deduced from the ratio of the 2.2 MeV to the fluence at 4.4 and 6.1 MeV (Gros et al. 2004), simultaneous fits of the C and O line shapes



**Fig. 17** Contour lines in the  $\alpha/p$ - $\Delta\Theta$  (width of the injected particle distribution) parameter space of downward directed particle distributions for simultaneous fits to the 4.4 and 6.1 MeV lines for different phases of SOL2003-10-28T11:10 (X17.2). Confidence levels at 50%, 70%, 90% are plotted for fits using an abundance of C reduced by 50% with respect to O as compared to the chromospheric abundance and for power-law particle spectra of 3.0 (dotted lines) and 4.0 (continuous lines). The best values of  $\alpha/p$  and  $\Delta\Theta$  for the two spectral indices are indicated by open ( $s = 3.0$ ) and filled symbols ( $s = 4.0$ ) (from Kiener et al. 2006)

and line fluences have led Kiener et al. (2006) to favor the production of the  $\gamma$ -ray line emissions in the SOL2003-10-28T11:10 (X17.2) flare, by downward directed ion beams with a relatively low  $\alpha/p$  ratio, around 0.1 (Fig. 17). High-resolution  $\gamma$ -ray line spectroscopy of two other weaker flares located at the limb was also performed by Harris et al. (2007) using *INTEGRAL* data (SOL2003-11-04T19:53 and SOL2005-09-07T09:52; see also Sect. 2.3).

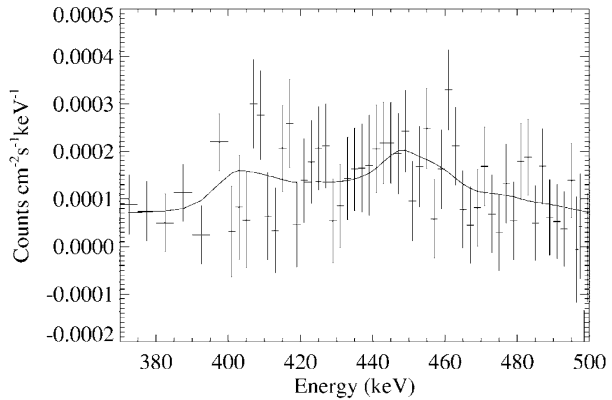
In addition to the line width of the narrow flare  $\gamma$ -ray lines discussed above, the profile of  $\alpha^4\text{He}$  fusion lines around 0.452 MeV ( $\alpha/\alpha$  lines) may also provide a potential diagnostic of the angular distributions of energetic particles in the interaction site. From *SMM* observations of two flares, it had been shown that the line shape of the  $\alpha^4\text{He}$  fusion line was inconsistent with its production by a downward beam and was rather consistent with an isotropic or a fan-beam distribution (i.e., as obtained at a magnetic mirror point) in the interacting site (Share and Murphy 1995, 1998). This is consistent with what was found by Share et al. (2002) by analyzing line shapes for *SMM* flares.

Since the launch of *RHESSI*, high-resolution spectra of the  $\alpha/\alpha$  lines have been obtained for the SOL2002-07-23T00:35 (X4.8) (Fig. 18) and SOL2003-10-28T11:10 (X17.2) events (Share et al. 2003a, 2004). For these two flares the shape of the line complex is also found to be consistent with a downward isotropic distribution.

## 2.7 Energy Content in Ions

De-excitation  $\gamma$ -ray lines provide information about ions above  $\sim 1$  MeV/nucleon. The energetic ion distribution below this energy is essentially unknown but is of particular interest for the total ion energy content (see Sect. 2.10). Since the first detection of  $\gamma$ -ray lines in 1972, quantitative results from  $\gamma$ -ray spectroscopy have been obtained for more than 20 events, yielding information on the energy content in ions. Several ratios of pairs of nuclear lines have been used to infer the ion energy spectrum and then the ion energy content:  $\Phi_{2.223}/\Phi_{4-7}$  and  $\Phi_{1.63}/\Phi_{6.13}$  (Ramaty et al. 1996). As an example, the threshold energies for excitation of Ne and O lines by fast protons are significantly different,  $>2$  and

**Fig. 18** Count spectrum of the  $\alpha$ - $^4\text{He}$  line measured by *RHESSI* for the SOL2002-07-23T00:35 (X4.8) event after subtraction of the other spectral components. The curve shows the *RHESSI* response to the line shape in the case of an  $\alpha$  particle distribution with saturated pitch-angle scattering (see Sect. 2.2.1) propagating in magnetic loops perpendicular to the solar surface at a heliocentric angle of  $73^\circ$  (from Share et al. 2003b). Reproduced by permission of the AAS



$>8$  MeV, respectively, which allows the use of the ratio of their measured fluxes to infer the ion energy distribution (Share and Murphy 1995). This determination is not independent of the assumed target abundances but combining results from several such methods reduces some of this uncertainty. The comparison of the steepness of the ion spectra deduced from the different ratios,  $\Phi_{2.223}/\Phi_{4-7}$  and  $\Phi_{1.63}/\Phi_{6.13}$  for different flares, shows indeed some consistency only when an enhanced Ne abundance is assumed,  $\text{Ne}/\text{O} = 0.25$  instead of the more standard value of 0.14 (Ramaty et al. 1996) (see also Sect. 2.3.1). As most of the narrow lines can be produced by energetic protons and  $\alpha$ s, the usual hypothesis is that the energy distributions of accelerated protons and  $\alpha$ s expressed in energy/nucleon are identical. The relaxation of this assumption will be discussed below. The determination of the proton spectrum from the ratio of the excitation lines from Ne and O depends on the assumption made on the ratio of Ne/O in the flaring region and on the ratio  $\alpha/p$  of fast  $\alpha$  particles to energetic protons. It is indeed found in Ramaty et al. (1995) that steeper ion spectra are needed to reproduce the same ratio of line fluences for smaller values of Ne/O and larger values of the  $\alpha/p$  ratio. The analysis based on the 19 events observed by *SMM*/*GRS* led to the conclusion that the energy contained in  $>1$  MeV ions lies in the range  $10^{29-32}$  erg for  $\gamma$ -ray line flares (see Ramaty et al. 1995, 1996, and the summary by Miller et al. 1997). These estimations were done under the following assumptions: the slope of the ion power-law spectrum is deduced from the ratio of the Ne/O line assuming thick-target emission and values of  $\text{Ne}/\text{O} = 0.25$ ,  $\alpha/p = 0.1$  and “impulsive” composition for other species (i.e. increase of Ne/O, Mg/O, Si/O, and S/O by a factor of  $\sim 3$  and by a factor of  $\sim 10$  for Fe/O with respect to coronal composition for the accelerated particles). The power-law spectrum is extended down to 1 MeV with a flat extension to lower energies. For the giant flares SOL1991-06-01T16:14 (X12) and SOL1991-06-04T03:37 (X12.0), observed either by *GRANAT*/*PHEBUS* and *CGRO*/*OSSE*, the energy contained in 1 MeV/nucleon ions has also been deduced and is found to be in the  $10^{32-10^{33}}$  ergs range (Ramaty et al. 1997; Murphy et al. 1997). For SOL1991-06-04T03:37, the total energy contained in accelerated protons is  $1.7 \times 10^{32}$  erg and the total energy contained in accelerated ions is  $1.0 \times 10^{33}$  erg under the following assumptions: impulsive flare abundances for accelerated particles, identical energy dependence for all ion spectra, and  $\alpha/p = 0.5$ .

The relaxation of the assumption of similar proton and  $\alpha$  energy spectra in MeV/nucleon has been studied by Toner and MacKinnon (2004) and applied to the estimates of the ion energy content in flares. As some of the narrow lines (in particular the  $\alpha$ - $\alpha$  lines at 0.429 and 0.478 MeV) result only from the interaction of energetic  $\alpha$ s with the solar atmosphere, the measured fluences of these lines can be used to infer the number of  $\alpha$  particles



$> 1$  MeV/nucleon once the steepness ( $\delta_\alpha$ ) of the  $\alpha$  spectrum has been chosen. This allows a computation of the flux of the narrow lines at 1.63 MeV and 6.13 MeV produced by the  $\alpha$ s. The remaining fluences in the narrow lines should be produced by fast protons. The ratio of the remaining fluences is then used to determine the steepness ( $\delta_p$ ) of the proton spectrum and then the number of fast protons required to produce the remaining fluences. Note that some values of the steepness of the  $\alpha$  spectra (excessively hard ones) can be excluded directly by the fact that the fluences of the produced narrow lines at 1.63 and 6.13 MeV would exceed the observed ones. The reexamination of the spectra and numbers of particles deduced from *SMM*/GRS spectra of four flares chosen in the list of Share and Murphy (1995) shows that harder spectra for  $\alpha$  particles than for protons are generally deduced, that most of the energy still goes to protons (by a factor of 100 to 1000) and that as a whole less energy goes to ions. As an example, for the well studied SOL1981-04-27T09:45 (X5.5) event, a total ion energy of  $1.6 \times 10^{31}$  erg is found with  $\delta_\alpha = 2.5$ ,  $\delta_p = 4.4$ ,  $\alpha/p = 0.004$  from the method of Toner and MacKinnon (2004), while the usual analysis (using the ratio of the fluences of the 1.63 MeV and 6.13 MeV lines) would lead, for the usually chosen value of  $\alpha/p = 0.5$ , to a total ion energy of  $5.5 \times 10^{31}$  erg with an  $\alpha$  and proton spectral index of 5.2. This discussion clearly shows the present limits and the uncertainties in deducing ion energy content from  $\gamma$ -ray line spectroscopy. It must finally be noted that in the analysis developed in Toner and MacKinnon (2004) the meaning of  $\alpha/p$  is different from the standard one when both ion spectra are similar. In the case of different ion spectra, the value of  $\alpha/p$  which is indicated above is the total number of  $\alpha$  particles  $\geq 1$  MeV/nucleon to the total number of protons above 1 MeV.

Other effects can also alter the amount of energy estimated for accelerated ions as deduced from  $\gamma$ -ray line spectroscopy. As stated above, the production of the  $\gamma$ -ray line emission is usually estimated under the assumption of thick-target production. This means that the energy loss rate of the radiating ions is also a parameter (even if well hidden) of the  $\gamma$ -ray line production. Most of the models of  $\gamma$ -ray line production in flares assume that the target in which the fast ions interact and produce lines is a “cold” neutral target (i.e., energetic particle speeds much larger than the target particle speeds). This may no longer be true if ions with energies close to the threshold energies for  $\gamma$ -ray line production interact in a hot flaring plasma (temperature of a few  $10^7$  K), i.e., if the  $\gamma$ -ray line emission site is partly coronal (see Sect. 5 for some discussion on possible coronal sites of  $\gamma$ -ray line emission). Emslie et al. (1997), and more recently MacKinnon and Toner (2003), have examined the effects of introducing a “warm target” for the production of  $\gamma$ -ray lines. In such a warm medium, fast ions with energies just above the threshold for nuclear line production will lose less energy to collisions than in a cold medium. This has the effect of increasing the efficiency of line production by ions just above the threshold. This increase is counterbalanced by the fact that the energy losses in an ionized (because hot) medium are larger than in a neutral medium. MacKinnon and Toner (2003) estimated the strength of the Ne 1.63 MeV line relative to the strength of the O 6.13 MeV line, used to estimate ion spectra, as a function of the temperature of the target and as function of the  $\alpha/p$  ratio, i.e. assuming as in most works a similar spectral shape for energetic protons and  $\alpha$ s in MeV/nucleon. They show that in a warm target, there is an increase of the relative production of the Ne 1.63 MeV line to the O 6.13 MeV line. This increase is more important for steeper spectra and for lower values of  $\alpha/p$  (this simply illustrates the fact that the Ne line cross-sections have much lower thresholds for proton production than for  $\alpha$  production). Flatter ion spectra and thus lower ion energy contents are then required to reproduce the observed line fluences ratio than usually deduced (a reduction by more than a factor of  $\sim 10$  of the total energy contained in protons and  $\alpha$ s can be achieved if the emission site has a temperature of  $6 \times 10^7$  K and  $\alpha/p$  is 0.1; see

MacKinnon and Toner 2003). Taking into account the effects of a warm target could finally reduce the discrepancies which were found in the ion spectral indices deduced from the different line ratio  $\Phi_{2.223}/\Phi_{4-7}$  and  $\Phi_{1.63}/\Phi_{6.13}$  for a standard value of Ne/O. Indeed, even with a standard value of the Ne/O abundance ratio, the inclusion of a warmer emission site leads to harder ion spectra to produce the same  $\Phi_{1.63}/\Phi_{6.13}$  (MacKinnon and Toner 2003).

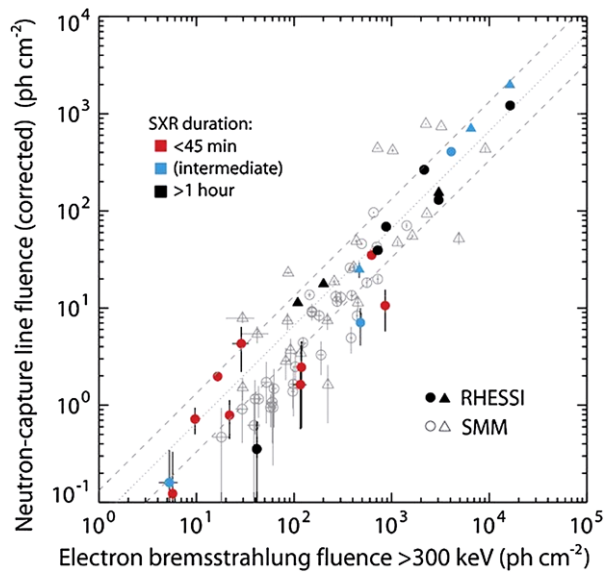
Observations performed by *RHESSI* brought information on the ion energy content for three more  $\gamma$ -ray line events: SOL2002-07-23T00:35 (X4.8) (Lin et al. 2003; Emslie et al. 2004a; Dauphin and Vilmer 2007), SOL2003-10-28T11:10 (X17.2) (Gan 2005; Share and Murphy 2006), and SOL2003-11-02T17:25 (X8.3) (Gan 2005; Share and Murphy 2006). Using a procedure similar to the one which has been used previously for *SMM*/GRS and *CGRO* events by Murphy et al. (1997) and Ramaty et al. (1997), Lin et al. (2003) found a minimum total energy in accelerated protons above 2.5 MeV of  $1.4 \times 10^{30}$  ergs ( $10^{31}$  erg for all ions) for SOL2002-07-23T00:35 (X4.8) (assuming  $\alpha/p = 0.5$ ). Consistent values of the total energy in protons and  $\alpha$  particles above 2.5 MeV/nucleon were found by Dauphin and Vilmer (2007) from the modeling of the  $\gamma$ -ray line time profiles. Values of the proton energy content derived for SOL2003-10-28T11:10 (X17.2) are consistently found to be around  $1.5 \times 10^{31}$  ergs by Gan (2005) and by Share and Murphy (2006). For SOL2003-11-02T17:25 (X8.3) the proton energy content ranges from  $0.5 \times 10^{31}$  ergs to  $4.2 \times 10^{31}$  erg depending on the value of the proton spectral index used (3–3.6). This clearly shows the still-large uncertainties in the determination of these quantities.

## 2.8 Ion and Electron Acceleration in Flares and Variability

Using the accelerated ion and electron spectra derived from  $\gamma$ -ray and X-ray spectroscopy, it is possible to compare the energies contained in flare-accelerated ions and electrons. Such a study performed by Ramaty and Mandzhavidze (2000) for the 19  $\gamma$ -ray line flares observed by *SMM* showed that the energy contained in  $>1$  MeV ions may be comparable to the energy contained in subrelativistic electrons ( $>20$  keV). Emslie et al. (2004a) obtained a similar result for the first  $\gamma$ -ray line flare observed by *RHESSI*. At present, such comparisons of subrelativistic electron and ion energy contents have not been performed for more flares. The published comparisons show that there is a large dispersion of the relative electron ( $>20$  keV) and ion ( $>1$  MeV/nucleon) energy contents from one flare to the other, the energy contained in the ions sometimes exceeding the energy in the electrons. However, it must be recalled that all these estimations strongly depend on the low energy cut-off of both energetic electrons and ions which is for electrons not always easy to determine (see the discussion in Holman et al. 2011, this issue).

Another way of dealing with the question of the relative ion and electron acceleration in solar flares is to investigate the relationship between ion acceleration diagnosed by  $\gamma$ -ray line fluences and relativistic electron acceleration diagnosed by the  $>300$  keV bremsstrahlung radiation. A first comparison was carried out on *SMM*/GRS data between the  $>300$  keV bremsstrahlung radiation and the excess rate in the 4–8 MeV range (i.e., the rate above the bremsstrahlung continuum which is attributed to the production of  $\gamma$ -ray lines by ions (see Fig. 2)) showing that there is a good correlation between ion production (normalized above 30 MeV/nucleon) and electron production above 300 keV (see e.g. Forrest 1983; Chupp 1984). The relationship between energetic ion and relativistic electron acceleration can also be studied by comparing the 2.223 MeV line fluence to the  $>300$  keV X-ray emission (see, e.g., Murphy et al. 1993). Since the launch of *RHESSI*, 29 flares have been observed with significant  $>300$  keV continuum fluence. The fluences of the 2.223 MeV lines have been estimated for these flares from spectral analysis and corrected for attenuation for

**Fig. 19** Neutron-capture line fluence as a function of the electron bremsstrahlung fluence above 300 keV for flares with heliocentric angle  $<80^\circ$  (*RHESSI* in solid symbols, *SMM* in open symbols). Circles (triangles) represent flares with complete (incomplete) coverage. Colors represent the *GOES* soft X-ray (SXR) duration in three bins. The dotted line indicates the best fit in linear space that passes through the origin with a ratio of 0.066, and the dashed lines have slopes that differ by factors of  $\sim 2$  from the best-fit line (from Shih et al. 2009b). Reprinted by permission of AAS



flares close to the limb. The neutron-capture line fluences are found to be highly correlated to the  $>300$  keV bremsstrahlung fluences for all the flares located at heliocentric angles less than  $80^\circ$  and over a range of more than three orders of magnitude in fluence. A similar correlation was found for the flares previously observed by *SMM*. The ion energy range which produces the 2.223 MeV line depends in fact on the ion spectral index and on the accelerated and ambient abundances (see Sect. 2.2.5 and Murphy et al. 2007). As a first approximation, this line can be considered as a good indicator of the number of  $>30$  MeV protons and its fluence is taken as being proportional to the number of protons above this energy. When both *SMM* and *RHESSI* data sets are taken into account, the strong correlation obtained between the neutron-capture line fluence (corrected for attenuation) and the bremsstrahlung fluence ( $>300$  keV) (see Fig. 19) clearly shows a link between the total energy content in protons above 30 MeV and the total energy content in electrons above 300 keV (Shih et al. 2009b). This suggests that high-energy electrons and ions are directly linked by acceleration processes. This may be a more direct link than for subrelativistic electrons and ions, given the larger variation between electron energy contents above 20 keV and ion energy contents above 1 MeV/nucleon discussed above. This is a constraint which should be borne in mind when discussing acceleration mechanisms in solar flares.

The correlation found by Shih et al. (2009b) between ion and relativistic electron acceleration seems to indicate that energetic ions are produced as soon as there is a significant production of energetic electrons above, e.g., 300 keV. From this correlation, there does not appear to be a distinct class of electron-dominated flares that produce much more high-energy bremsstrahlung radiation relative to nuclear emission (e.g., Rieger et al. 1998) although some episodes of the flares reported by Shih et al. (2009b) may exhibit higher relative numbers of electrons with respect to ions than the mean value over several flares as well as over the whole event. Extreme cases of the variability of the electron bremsstrahlung component to the nuclear line component have been reported in the *SMM* era during short duration (a few seconds to a few tens of seconds) transient bursts observed above 10 MeV at any time during a flare. They are referred to as electron-dominated events (Rieger 1994) and are characterized by weak or no detectable  $\gamma$ -ray line emission and by hard  $\geq 1$  MeV electron

bremsstrahlung spectra. They were first reported from *SMM*/GRS observations (e.g., Rieger and Marschhäuser 1991), and were afterwards observed by *GAMMA-1* (Akimov et al. 1992; Leikov et al. 1993), PHEBUS and SIGMA experiments aboard *GRANAT* (Pelaez et al. 1992; Vilmer et al. 1994), *CGRO* (e.g., Dingus et al. 1994) and *Yohkoh* (Yoshimori 1999b). The spectral analysis of 12 electron-dominated events observed by *SMM*/GRS (Rieger et al. 1998) confirmed the hardness of the bremsstrahlung spectra above 1 MeV (mean value of the power-slope around 1.84). The mean value of the spectral index between 0.3 and 1 MeV ( $\sim 2.7$ ) does not differ significantly from that of other flares. However, the apparent lack of  $\gamma$ -ray line emission does not rule out a simultaneous production of relativistic electrons and ions (Trottet et al. 1998; Vilmer et al. 1999) for the electron-dominated events observed with *GRANAT*/PHEBUS. Indeed, if one assumes that the energy content in ions above 1 MeV is similar to that contained in electrons (i.e., around a few  $10^{29}$  ergs for the cases studied by Trottet et al. (1998) and Vilmer et al. (1999)), as appears to be the case for  $\gamma$ -ray line flares, one finds that no detectable  $\gamma$ -ray line fluence could be observed, given the hardness of the electron bremsstrahlung component and the limited spectral resolution (and thus line sensitivity) of the PHEBUS experiment. The only remaining question would then be to understand why the spectrum of accelerated electrons is so much harder in these events than at most other times.

Variability of the accelerated electron-to-proton ratio not only occurs from flare to flare as discussed above, but also on time scales of tens of seconds within individual events. Chupp et al. (1993) reported, e.g., for an *SMM* event a variation of the relative number of electrons above 500 keV and of ions above 30 MeV on time scales of tens of seconds. Dauphin and Vilmer (2007) also reported variation of the relative number of electrons above 150 keV and of the number of energetic protons and  $\alpha$  particles above 1 MeV/nucleon in the evolution of SOL2002-07-23T00:35 (X4.8) observed by *RHESSI*. These variations were deduced from the analysis and modeling of time delays between  $\gamma$ -ray line emissions and hard X-rays. A question of obvious interest would be to determine whether these changes are connected to spatial source evolution. Such variations of the ratio of accelerated electrons to accelerated protons should also be taken into account when discussing acceleration processes.

Another interesting result follows from the statistical analysis of Shih et al. (2009b). For eight of the flares with the largest 2.223 MeV line fluence, a correlation is found between the 2.223 MeV line fluence (i.e., the number of  $> 30$  MeV protons) and the fluence above 50 keV as well as with the *GOES* class. However, this correlation is found only when a threshold in the production of ions is reached. A similar relationship had been discussed at the time of *SMM* by Cliver et al. (1994). This ultimately suggests that while the acceleration of protons above 30 MeV is closely related to the acceleration of relativistic electrons, the acceleration of subrelativistic electrons is only proportional to the acceleration of relativistic electrons and ions when a given threshold of high energy particles is reached. This may suggest two acceleration processes, one producing proportional quantities of relativistic electrons and ions and the other one producing mostly subrelativistic electrons.

## 2.9 Long-Lived Radioactivity from Solar Flares

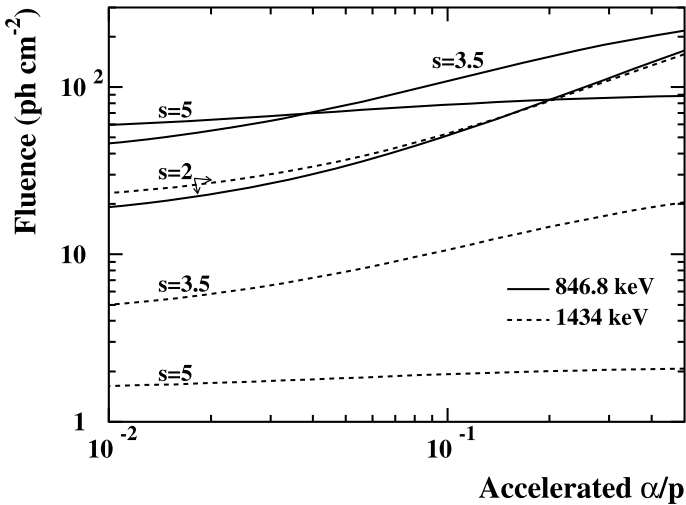
Interactions of flare-accelerated ions with the solar atmosphere can synthesize radioactive nuclei, whose decay can produce observable, delayed  $\gamma$ -ray lines in the aftermath of large flares. The detection of these delayed lines would provide new insights into the spectrum and composition of the flare fast ions. Many of these radioisotopes would be produced predominantly by interactions of fast heavy ions with ambient hydrogen and helium, especially since accelerated heavy nuclei are believed to be significantly enhanced compared to the ambient medium composition (e.g., Murphy et al. 1991).

One of the most promising of such lines is at 0.847 MeV resulting from the first excited state of  $^{56}\text{Fe}$  which in turn has been produced via the decay of  $^{56}\text{Co}$  (half-life  $T_{1/2} = 77.2$  days) (Ramaty and Mandzhavidze 2000; Kozlovsky et al. 2002; Tatischeff et al. 2006). Another line produced in this decay is at 1.238 MeV (Shih et al. 2007). For a few days after a large flare however, the most intense delayed line is predicted to be the 511 keV positron-electron annihilation line resulting from the decay of several long-lived  $\beta^+$  radioisotopes. Tatischeff et al. (2006) have pointed out other delayed  $\gamma$ -ray lines that appear to be promising for detection, e.g., at 1.434 MeV from the radioactivity of both the isomer  $^{52}\text{Mn}^m$  ( $T_{1/2} = 21.1$  min) and the ground state  $^{52}\text{Mn}^g$  ( $T_{1/2} = 5.59$  days), 1.332 and 1.792 MeV from  $^{60}\text{Cu}$  ( $T_{1/2} = 23.7$  min), 1.369 and 2.754 MeV from  $^{24}\text{Na}$  ( $T_{1/2} = 15.0$  hours), and 0.931 MeV from  $^{55}\text{Co}$  ( $T_{1/2} = 17.5$  hours). The delayed lines should be very narrow, because the radioactive nuclei are stopped by energy losses in the solar atmosphere before they decay. Unless the flare is very close to the solar limb, the  $\gamma$ -ray line attenuation in the solar atmosphere should not be significant (see Hua et al. 1989), as long as the radioactive nuclei do not plunge deep into the solar convection zone. Searches for upper limits of the radioactivity line at 1.238 MeV were performed with *RHESSI* (Shih et al. 2007) for periods after the large flares of July 2002, October–November 2003 and January 2005. No strong conclusion has been drawn so far.

In addition to  $\gamma$ -ray lines emitted from de-excitation of daughter nuclei, radioactive X-ray lines can be produced from the decay of proton-rich isotopes by orbital electron capture or the decay of isomeric nuclear levels by emission of a conversion electron. The strongest delayed X-ray line is predicted to be the Co  $K\alpha$  at 6.92 keV (Tatischeff et al. 2006), which is produced from both the decay of the isomer  $^{58}\text{Co}^m$  ( $T_{1/2} = 9.04$  hours) by the conversion of a K-shell electron and the decay of  $^{57}\text{Ni}$  ( $T_{1/2} = 35.6$  hours) by orbital electron capture. The attenuation of this line by photoelectric absorption in the solar atmosphere should be  $<10\%$  for flares occurring at low heliocentric angles, as long as the radioisotopes produced in the chromosphere and upper photosphere are not transported to greater depths. Distinguishing this atomic line from the thermal X-ray emission can be challenging until the flare plasma has significantly cooled down. However, a few hours after the flare end time the thermal emission will be gone, or significantly reduced, and the delayed Co  $K\alpha$  line will be more easily detected.

To illustrate the potential of these lines for revealing details of the heavy ion energy distribution, we show in Fig. 20 calculated fluences of the 0.847 MeV and 1.434 MeV lines as a function of the accelerated  $\alpha/p$  abundance ratio. The calculations were normalized to a total fluence of the summed 4.44 and 6.13 MeV prompt narrow lines of 300 photons  $\text{cm}^{-2}$ , which is the approximate fluence observed in the SOL2003-10-28T11:10 (X17.2) flare. We assumed for the abundances of fast C and heavier elements relative to  $\alpha$ -particles the average composition of solar energetic particles measured in impulsive events (Reames 1999). Thus, the predicted fluence variations with accelerated  $\alpha/p$  actually show the relative contributions of reactions induced by fast protons. The fluences decrease for decreasing  $\alpha/p$  ratio (i.e., increasing proton abundance), because, for  $\alpha/p > 0.05$ , the radioisotopes are predominantly produced by spallation of accelerated Fe, whereas the ambient  $^{12}\text{C}$  and  $^{16}\text{O}$  lines largely result from fast proton interactions. This effect is less pronounced for  $s = 5$ , because for this very soft spectrum, the contribution of  $\alpha$ -particle reactions to the prompt line emission is more important. Thus, a concomitant detection of the 0.847 MeV and 1.434 MeV lines would allow measurement of not only the abundance of accelerated ions, but also of their energy spectrum.

As well as serving as diagnostics of the flare fast ion population, the radioisotopes can serve as tracers to study solar atmospheric mixing (Ramaty and Mandzhavidze 2000).



**Fig. 20** Total fluences of the delayed lines at 0.847 MeV (*solid curves*) and 1.434 MeV (*dashed curves*) as a function of the accelerated  $\alpha/p$  abundance ratio (see text), for spectral indices of the accelerated ion power-law spectrum  $s = 2, 3.5$  and  $5$ . The calculations are normalized to a total fluence of  $300 \text{ photons cm}^{-2}$  emitted during the  $\gamma$ -ray flare in the sum of the 4.44 and 6.13 MeV ambient  $^{12}\text{C}$  and  $^{16}\text{O}$  de-excitation lines (from Tatischeff et al. 2006). Reproduced by permission of the AAS

A measurement of the decay profile with time of several delayed lines would place very useful constraints on the extent and timescale of mixing processes in the outer convection zone. A future observation of the size and development of the radioactive patch on the solar surface would furthermore provide unique information on both the transport of flare-accelerated particles and dynamics of solar active regions. Note that solar radioactivity can be the only way to study flares that had recently occurred over the east limb.

## 2.10 Low-Energy Protons

The total energy content of a power-law particle energy distribution,  $F(E) \propto E^{-s}$ , is dominated by the lowest energy  $E$  for which this form holds (as long as  $s > 2$ ). The low-energy form of the distribution is thus important for assessing the ions' overall importance in flare energetics and energy transport. Power-law ion distributions measured in space appear unbroken to 0.02 MeV/nucleon (Reames et al. 1997). If this were to be true also at the flare site, extrapolation to these low energies of the ion distributions deduced above  $\sim 2$  MeV (Murphy et al. 1997) would yield estimates of ion energy content well in excess of any other measure of flare total energy. Unfortunately, there are few diagnostics bearing on ion distributions below 1 MeV.

Proton-capture cross-sections typically have resonances in the 0.1–1 MeV energy range. Since these resonances result from formation of the compound nucleus in excited states, they also give rise to  $\gamma$ -ray lines as these states decay to lower-lying energy levels. The cross-sections for these lines are small compared to those for de-excitation, but useful constraints on total ion energy could result from upper limits at the  $10^{-5} \text{ cm}^{-2}$  level (MacKinnon 1989). The two strongest lines are at 2.37 MeV, from  $^{12}\text{C}(p, \gamma)^{13}\text{N}$ , and at 8.07 MeV, from  $^{13}\text{C}(p, \gamma)^{14}\text{N}$ , constraining the proton energy distribution above 0.46 and 0.555 MeV, respectively. Attempts to constrain the fluxes in these lines observationally have proven inconclusive, however, whether in flares (Share et al. 2001) or the quiet Sun (McConnell et



al. 1997). The line at 8.07 MeV would suffer less competition from the strong de-excitation lines, but attempts to constrain it would still require fine energy resolution and/or low instrumental background.

Other possible diagnostics for lower energy ions include Doppler-shifted Lyman- $\alpha$  line emission (Canfield and Chang 1985) and line impact polarization of H $\alpha$ , H $\beta$  and other lines (Henoux et al. 1990; Vogt and Hénoux 1996). Observations of H $\alpha$  and H $\beta$  linear polarization in flares seem increasingly well-established (Xu et al. 2005, 2006; Firstova et al. 2008) although there remains an ambiguity in its interpretation between ion beams and streaming electron distributions (e.g., return currents). While there is a claimed observation of Doppler-shifted Lyman- $\alpha$  emission in a stellar flare (Woodgate et al. 1992); Brosius (2001) finds no evidence for  $\alpha$ -particle beams in He II Lyman- $\alpha$  from a C3.8 flare.

Their importance for the flare energy budget notwithstanding, flare-site ions below 1 MeV/nucleon remain more or less unconstrained by observations. A promising new technique could be to detect suprathermal ions through charge exchange with the ambient hydrogen (see the first detection of energetic neutral hydrogen atoms in a solar flare by Mewaldt et al. 2009).

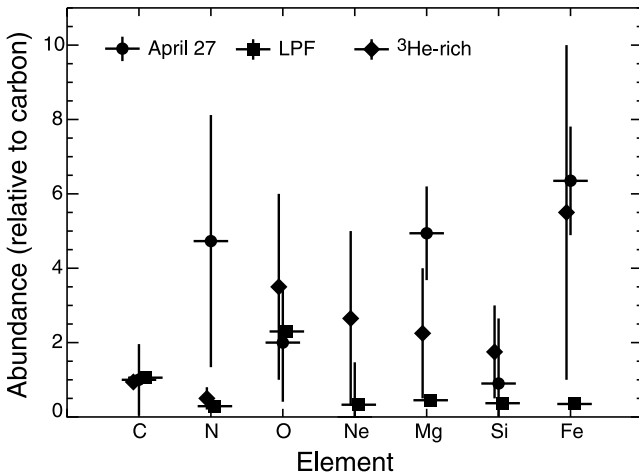
## 2.11 Heavy Energetic Ions as Diagnosed from Broad Lines

The relative abundances of accelerated ions heavier than He can be determined from the relative fluences of the broad de-excitation lines. These lines are produced when heavy energetic ions interact with ambient H and He. Because the heavy ions lose little of their kinetic energy in the reactions, the excited nucleus produced has a large velocity and the de-excitation  $\gamma$ -ray line can be strongly Doppler-broadened by up to  $\sim 20\%$  FWHM. Because the lines are so broad, many of them overlap, making the heavy-ion abundance determination much more difficult than the corresponding determination of ambient abundances using the narrow de-excitation lines. In addition, such broad lines are difficult to distinguish from the underlying continua formed by the electron bremsstrahlung and the nuclear continuum. The nuclear continuum is composed of hundreds of relatively weak, closely spaced de-excitation lines that also result from the nuclear interactions along with the strong lines clearly visible in flare spectra. These lines are so numerous and closely spaced that they merge and appear as a continuum to  $\gamma$ -ray detectors. This continuum, however, does have structure, on the order of several hundred keV, and knowledge of this structure is critical to reliably separate it from the broad lines. The early attempts to derive heavy-ion abundances from flare  $\gamma$ -ray data that we discuss here used relatively crude modeling of this nuclear continuum. On-going analyses using improved nuclear-continuum modeling recently obtained from modern nuclear reaction codes will improve the reliability of such determinations (see Murphy et al. 2009).

Murphy et al. (1991) used the  $\gamma$ -ray de-excitation line code from Ramaty et al. (1979) (see the revised version in Kozlovsky et al. 2002) to calculate both narrow and broad line spectra from the most abundant elements in the solar atmosphere, and the most abundant accelerated ions. The abundances were varied to obtain the best fit to the *SMM* data for SOL1981-04-27T09:45 (X5.5). The resulting accelerated-ion abundances relative to accelerated carbon are shown in Fig. 21. Also shown for comparison are similar element abundances measured in space from large proton flares (LPF) and impulsive,  $^3\text{He}$ -rich events. The uncertainties for most of the elements are quite large, but Mg and Fe are seen to be significantly ( $>3\text{--}4\sigma$ ) enhanced relative to C and O, similar to the enhancements seen in the impulsive  $^3\text{He}$ -rich events.

Observations of the behind-the-limb flare SOL1991-06-01T16:14 (X12) with *GRANAT*/PHEBUS (Barat et al. 1994) have moreover shown that the enhancements in heavy ions





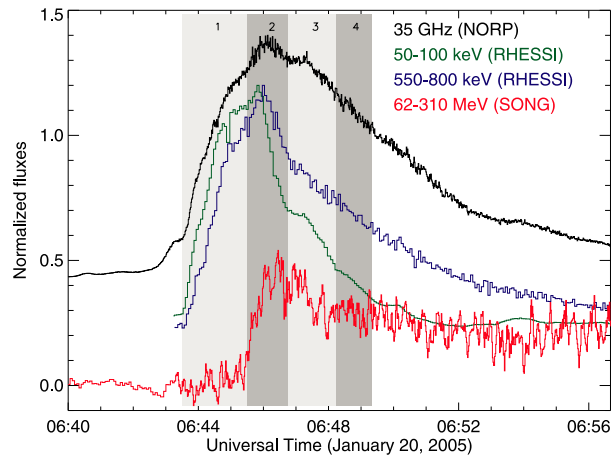
**Fig. 21** Derived accelerated-ion abundances relative to accelerated carbon (*circles*) for SOL1981-04-27T09:45 (X5.5) (adapted from Murphy et al. 1991). Also shown are large proton flare (LPF, *squares*) and impulsive <sup>3</sup>He-rich event (*diamonds*) abundances (Murphy, private communication)

may increase with time in the course of the flare, reaching towards its end the highest values observed for solar energetic particles in space (Trottet et al. 1996; Ramaty et al. 1997). As a thin-target production of the emission is required to account for the very high observed ratio of 1.1–1.8 MeV flux to 4.1–7.6 MeV flux, the temporal evolution of the abundances of accelerated ions is to be related to the evolution of the accelerated particles themselves. It must finally be noticed that, although a behind-the-limb flare, this event is associated with one of the largest  $\gamma$ -ray line fluences observed so far. This flare is also surprisingly associated with the observation of a strong flux of neutrons by the OSSE experiment (Murphy et al. 1999). As the neutrons are also expected to be produced as a thin target, a hard ion spectral index (power-law index around 2) is deduced by Murphy et al. (1999) up to at least 50 MeV.

### 3 Pion-Decay Radiation in Solar Flares

Observations of pion-decay radiation from solar flare  $\gamma$ -rays and of neutrons (see next section) combined with observations of flare  $\gamma$ -ray lines give a complete picture of the accelerated ion distribution above a few MeV/nucleon to several GeV/nucleon (see, e.g., Ramaty 1986; Chupp 1984, 1996; Vilmer and MacKinnon 2003; Chupp and Ryan 2009, for reviews). Studies of high energy emissions from the flare site started with *SMM* (Murphy et al. 1987), continued with events observed with *GAMMA-I* (Akimov et al. 1992), *CGRO* (e.g., Mandzhavidze and Ramaty 1992; Kanbach et al. 1993; Dunphy et al. 1999), and now with *CORONAS-F* (Kudela et al. 2003). Pion-decay radiation together with observations of neutrons provide information on the highest ion energies produced during flares. Charged pions decay to yield electrons and positrons, which in turn produce  $\gamma$ -rays by bremsstrahlung. Positrons also contribute to the continuum by annihilating in flight. Neutral-pion ( $\pi^0$ ) decay results in two photons, with one emitted at a high energy. This results in a very flat, broad “bump” feature which has a maximum at 67 MeV. Synchrotron losses of electrons and positrons may be important and shorten their lifetimes, therefore reducing their contribution with respect to the radiation from neutral-pion decay (Murphy et al. 1987). Energetic

**Fig. 22** Time profiles of the normalized flux density at 35 GHz (*top*) and normalized count rates of hard X-rays and  $\gamma$ -rays (*RHESSI*, *CORONAS-F/SONG*) at different energies. The high energy  $\gamma$ -rays observed by SONG are pion-decay photons from primary protons at energies above 300 MeV (from Masson et al. 2009)

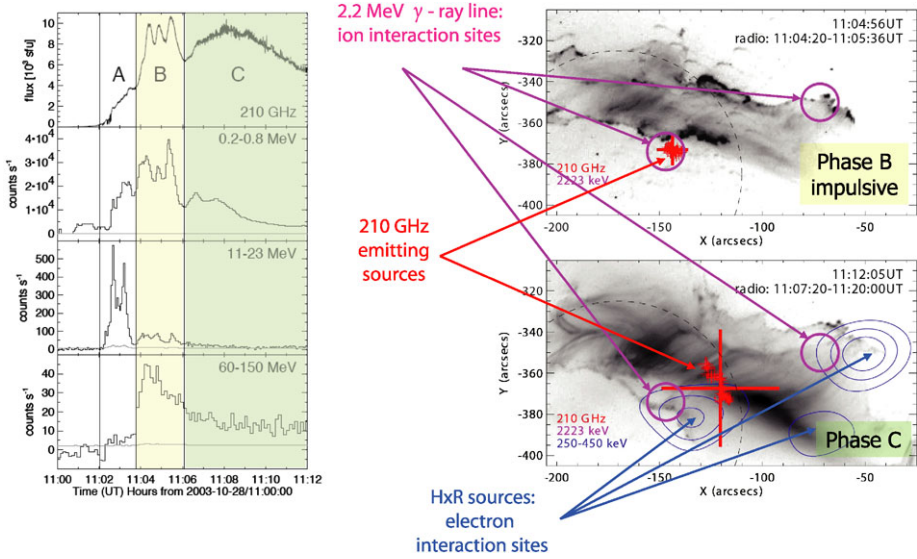


electrons above 10 MeV are also produced in solar flares and produce bremsstrahlung continuum, potentially masking pion-decay radiation.

Pion decay radiation was first observed with the *SMM/GRS* instrument for the flare SOL1980-06-21T02:00 (X2.6) (upper limit) and then for the flare SOL1982-06-03T13:26 (X8.0) (Forrest et al. 1985). The latter event provided the first convincing observations of  $\pi^0$ -decay radiation in a solar flare. This event showed that the production of pions can occur early in the impulsive phase defined by the production of hard X-rays near 100 keV. However, a significant portion of the high-energy emission was also observed well after the impulsive phase in an extended phase mostly observed at high energies. High-energy neutrons were also detected for that event (see next section). Together with the development of models for ion acceleration and  $\gamma$ -ray production, these observations led to the first determination of high-energy ion distributions in flares (Murphy et al. 1987). Given the assumed spectral shape of energetic protons (either a Bessel function or a power-law spectrum), numbers and spectra of energetic protons were estimated for both the impulsive and extended phases from the ratio of the differential pion decay radiation at 100 MeV to the 4.1–6.4 MeV nuclear emission. It was found that the first phase was characterized by a significantly steeper proton spectrum than the extended phase. Pion-decay radiation was subsequently reported for other flares observed with *SMM/GRS* (Dunphy and Chupp 1991, 1992; see also Chupp and Dunphy 2000, for a review).

After the end of the *SMM* mission in November 1989 and before the launch of *CORONAS-F* at the end of July 2001, there was no specifically solar-dedicated mission for high-energy radiation, but several satellites still provided  $\gamma$ -ray data (*GRANAT/PHEBUS*, *GAMMA-1*, and *CGRO*).

Until now, around 20 events have been observed with significant pion production (see Lockwood et al. 1997; Myagkova et al. 2007; Chupp and Ryan 2009). Some of the most recent events have been observed in a wide energy range by both *RHESSI* and *CORONAS-F* (e.g., Kuznetsov et al. 2008; Trotter et al. 2008; Masson et al. 2009) (see, e.g., Fig. 22). For some of the events, high-energy emission has been observed for hours after the impulsive phase of the flare, revealing that high energy ions must be continuously accelerated on long timescales in some flares (e.g., Kanbach et al. 1993; Ryan et al. 1994; Ryan 2000; Rank et al. 2001). Quantitative analysis of a few of the events with significant pion production has been performed providing information on the ion energy spectrum at energies greater than 300 MeV and allowing a comparison of this spectrum with the one deduced at lower



**Fig. 23** *Left:* 210 GHz submillimeter radio flux from KOSMA (Kölnener Observatorium für SubMillimeter Astronomie) and X-ray/ $\gamma$ -ray fluxes from CORONAS-F/SONG; *right:* imaging in radio at 210 GHz (red crosses), UV (background image from TRACE), X-rays and  $\gamma$ -rays from RHESSI (blue and pink contours from Trotter et al. 2006) in phase B and C showing, electron and ion interaction sites (adapted from Trotter et al. 2008). Reproduced by permission of the AAS

energies from  $\gamma$ -ray line spectroscopy (see e.g., Alexander et al. 1994; Dunphy et al. 1999; Kocharov et al. 1994, 1998; Vilmer et al. 2003). These comparisons generally show that the ion energy distribution does not have a simple power-law form from the  $\gamma$ -ray line emitting energy domain (1–10 MeV) to the pion-producing energy domain (>300 MeV).

In recent years, some of the events with significant pion-decay radiation have been found to be associated with submillimeter (above 200 GHz) emissions (Kaufmann et al. 2004; Lüthi et al. 2004). These observations have revealed the existence of a new emission component with intensities well above the extrapolation of the radio synchrotron spectrum seen at lower frequencies. Moreover, the radio spectrum increases with increasing frequency contrary to what is expected from an optically thin synchrotron spectrum. The origin of this new component is still under discussion. One possibility could be that this emission be produced by synchrotron emission from pion-decay positrons. This last process was described a long time ago (Lingenfelter and Ramaty 1967b) and could be considered as a good candidate for the high frequency observations, given the association between events exhibiting pion-decay radiation and events showing a spectral increase above 200 GHz (Myagkova et al. 2004; Silva et al. 2007). This is illustrated in Fig. 23 from Trotter et al. (2008) which shows the observations of SOL2003-10-28T11:10 (X17.2) with KOSMA<sup>5</sup> at 210 GHz and with the SONG experiment on CORONAS-F at energies above 0.2 MeV. The onset of the impulsive component of the submillimeter component (phase B on the figure) is clearly associated with the start of the radiation above 60 MeV, i.e., the start of >300 MeV/nucleon ion acceleration. The 210 GHz source size is compact (<10'') in this phase and its location is co-spatial with the site of interacting ions (revealed by the 2.2 MeV line emission site) but not to the

<sup>5</sup>Kölnener Observatorium für SubMillimeter Astronomie.

site of interacting electrons. In phase C, when no impulsive submillimeter emission and no strong emission above 60 MeV are observed, the submillimeter sources are quite different. The close correlation in time and space of the impulsive submillimeter emission and of the strong production of neutral pions thus suggests that synchrotron emission from charged pion-decay positrons could be responsible for the submillimeter emission. However the submillimeter flux predicted from the number of positrons derived from charged pion decay seems inadequate to account for observed fluxes. An alternative interpretation was given by Silva et al. (2007) for SOL2003-11-02T09:55 (X3.9). It was concluded there that the most likely source of the submillimeter emission is gyrosynchrotron emission from non-thermal electrons but this requires high local magnetic fields, very large densities of accelerated electrons and very small source sizes. Although many interpretations have been proposed in the literature (see above and Kaufmann and Raulin 2006; Sakai and Nagasugi 2007; Fleishman and Kontar 2010), the origin of this submillimeter component remains a challenging topic of discussion.

Another challenging topic linked to the observations of pion decay radiation in a few flares is related to the origin of coronal hard X-ray sources reported in, particularly, SOL2005-01-20T07:01 (X7.1). MacKinnon and Mallik (2010) have indeed shown that some coronal hard X-ray sources might be interpreted as photospheric, optical photons inverse Compton scattered to deka-keV energies by electrons, or indeed positrons in the 10–100 MeV energy range. In particular, the coronal hard X-ray source reported in SOL2005-01-20T07:01 (Krucker et al. 2008b) could be explained in this way if just a few percent of the secondary positrons implied by estimated fast ion numbers (Masson et al. 2009) were present in the corona. Coronal hard X-ray sources in locations that seem too tenuous for a bremsstrahlung explanation (see Krucker et al. 2008a, for a review) may thus offer a novel window on  $\sim$ GeV-energy ions.

## 4 Neutron Observations in Space and on Earth

Many reactions between energetic flare ions and ambient nuclei produce energetic neutrons as secondaries. These secondary neutrons undergo multiple, elastic scattering and either thermalize in the solar atmosphere or escape into interplanetary space. Measurements of the escaping neutrons augment knowledge of flare ion distributions gained from  $\gamma$ -ray lines. In particular they fill a “diagnostic gap” between the de-excitation lines, dominated by ions in the 1–100 MeV energy range, and the pion-decay radiation which needs ions of  $\geq 300$  MeV (Lockwood et al. 1997). Neutrons in space give valuable information on the most energetic flare ions, especially when measurements of pion decay  $\gamma$ -rays are not available. They may also play a role in constraining the numbers of heavier fast ions, prolific producers of free neutrons via evaporation reactions.

Having no electric charge, they arrive at the detector undeviated by active region magnetic fields or interplanetary medium plasma turbulence. Free neutrons are unstable to  $\beta$ -decay, with a rest-frame mean lifetime of 886 s, so many decay before they can be detected at Earth.

### 4.1 Neutron Detections

Energetic neutrons from flares have been detected both in space and on the ground. They give a signal in scintillators that may be distinguished by various means from photons or charged particles (pulse shape, combination of signals in multiple elements, etc.) (e.g.,

Chupp et al. 1987; Murphy et al. 1999). On the ground they have been detected by neutron monitors, and by specially designed neutron telescopes (e.g., Watanabe et al. 2006).

The global neutron-monitor network has great value for studying extremes of solar particle acceleration, offering detectors of a stopping power and effective area that would be impractical in space. They are located inside Earth's magnetic field in a way that aids the discrimination of neutrons from other particle signals (Usoskin et al. 1997; Lockwood and Debrunner 1999). Neutron-monitor count-rate enhancements following solar flares are generally due to solar energetic particles interacting with Earth's atmosphere (e.g., Lopate 2006) but neutrons genuinely of solar origin may be distinguished on grounds of timing and geographical distribution. Neutron telescopes provide neutron spectral and angular resolution in the  $>50$  MeV energy range and can discriminate neutrons from charged particles (Muraki et al. 1992; Tsuchiya et al. 2001). They have been installed in seven high-altitude locations around the world.

A neutron of 150 MeV travels a distance of 1 AU in a neutron lifetime (MacKinnon 2007). Lesser energies are more likely to decay *en route* from the Sun while time dilatation extends the lifetime of neutrons at energies above 1 GeV. The neutron survival probability to Earth thus plummets below  $\sim 100$  MeV. Nonetheless, solar flare neutrons have arrived at Earth in detectable numbers in the energy ranges 10–100 MeV (Ryan et al. 1993) and 50–360 MeV (Muraki et al. 1992). Minimum neutron energies for detection on the ground are 50 MeV (for neutron telescopes, see e.g., Muraki et al. 1992) or 200–500 MeV (for neutron monitors; see Debrunner et al. 1989; Shibata 1994).

The first detection of flare neutrons was by the *SMM/GRS* instrument, from the flare SOL1980-06-21T02:00 (X2.6) (Chupp et al. 1982). The flare SOL1982-06-03T13:26 (X8.0) produced energetic neutrons that were detected in space by *SMM/GRS* and on the ground using the Jungfraujoch and other neutron monitors (Chupp et al. 1987). Neutron-decay protons were also detected in space from this flare (Evenson et al. 1983).

Ground-based detections of solar neutrons have been recently reviewed by Watanabe et al. (2005) and Valdés-Galicia et al. (2009). Since SOL1982-06-0313:26 (X8.0), ten more solar neutron events have been clearly recognized in neutron monitor data: SOL1990-05-24T21:45 (X9.3) (Shea et al. 1991; Smart et al. 1995; Debrunner et al. 1993, 1997), SOL1991-03-22T22:45 (X9.4) (Pyle and Simpson 1991), SOL1991-06-04T03:37 (X12.0) and SOL1991-06-06T03:37 (X12.0) (Muraki et al. 1992; Struminsky et al. 1994) and several occasions during Cycle 23 (Watanabe et al. 2003, 2006; Bieber et al. 2005; Sako et al. 2006). The second such event was observed by the IGY-type neutron monitor located at Climax and several other stations in North America: SOL1990-05-24T21:45 (X9.3) (Shea et al. 1991; Smart et al. 1995; Debrunner et al. 1993, 1997). In the SOL1991-06-04T03:37 (X12.0) event, solar neutron signals were recorded by three different detectors (neutron monitor, solar neutron telescope, and muon telescope) located at Mt. Norikura.

In space, apart from the *SMM/GRS* instrument, energetic flare neutrons have been detected with the OSSE and COMPTEL instruments on the *CGRO* mission (Murphy et al. 1999; Dunphy et al. 1999) as well as with the PHEBUS instrument aboard *GRANAT* (Debrunner et al. 1997) (see, e.g., Chupp and Ryan 2009, for a review). Pulse-shape analysis in OSSE's NaI scintillators discriminated neutrons from photons (Murphy et al. 1999). In COMPTEL, signals from two arrays of detectors were combined to deduce arrival directions and energies for individual neutrons, via elastic scattering kinematics. Such imaging spectroscopy of 10–100 MeV neutrons was possible for several flares in June 1991 (e.g., Ryan et al. 1993).

## 4.2 Key Features of Neutron Observations

Solar neutron events are too few in number for statistical studies. Nonetheless detections so far share some common features summarized in Watanabe et al. (2005). Detectable neutrons have come from large flares, SOL2000-11-24T15:13 (X2.3) being the smallest of these (Watanabe et al. 2003). Of course, this could be observational bias rather than a physical feature of flares. No correlation is evident between the flare soft X-ray flux and the neutron emissivity. Detectable neutrons at Earth do not appear to come preferentially from limb or disk centre flares.

Using, e.g., the  $\gamma$ -ray de-excitation line flux time profile as a proxy for the rate of ion production at the Sun, neutron energy distributions have been deduced from neutron-monitor count-rate time profiles. Neutrons at the Sun are generally found to have  $E^{-\delta}$  distributions, with  $\delta$  in the range 3–4 (Watanabe et al. 2003, 2006). Via model calculations using the code of Hua et al. (2002), the ion energy distribution at the Sun is then found to be roughly one power of  $E$  softer. Total emissivity at the Sun is in the range  $4 \times 10^{28}$ – $8 \times 10^{30}$  sr<sup>-1</sup> for neutrons in the range 0.05–1.5 GeV.

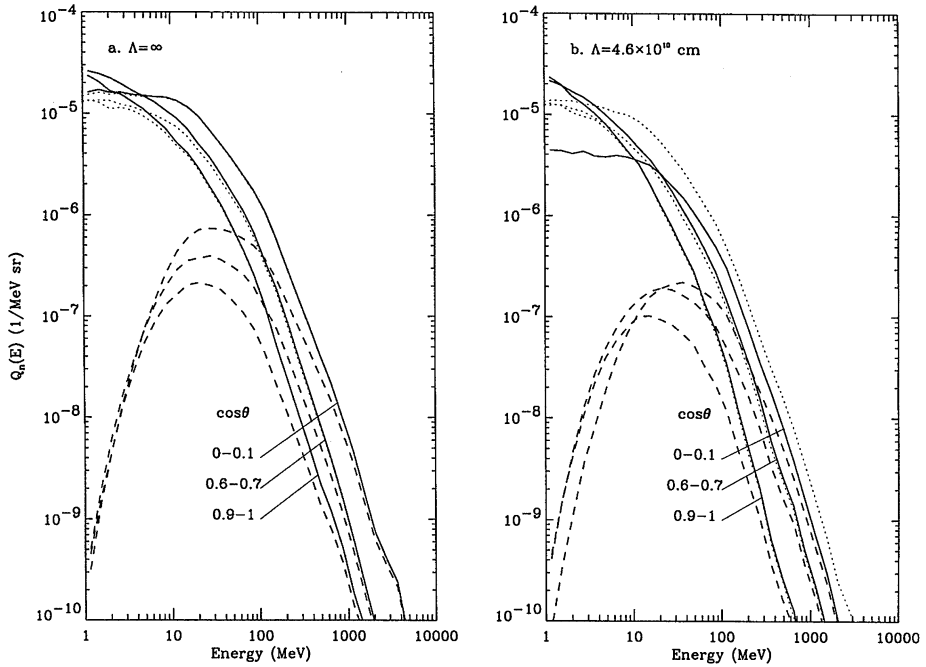
Lockwood et al. (1997) and Debrunner et al. (1997) emphasized that the de-excitation line flux does not always give the best proxy for the time development of neutron production, urging use instead of the pion-decay flux when this is measured. Neutron and pion production by energetic ions (> 300 MeV) are closely related (see Sect. 4.3) so this is not surprising. The flare SOL2005-09-07T09:52 (X17.0), for instance, was detected on the ground by both neutron telescopes and neutron monitors and found to produce neutrons over a more extended period than implied by the flare impulsive phase, as defined by hard X-ray emission. The class of extended  $\gamma$ -ray flares (Ryan 2000) often show pion-decay  $\gamma$ -radiation over tens of minutes. Similarly time-extended neutron emission would be a corollary, as was found using COMPTEL for SOL1991-06-09T04:24 (X10.0) and SOL1991-06-15T11:17 (X12.0) (Ryan et al. 1993).

## 4.3 Production of Solar Neutrons

Ions are believed to be accelerated in the corona, losing their energy mostly in the chromosphere and photosphere and producing the bulk of their secondaries (photons, neutrons) there. The eventual escaping neutron velocity distribution is governed by the initial velocity distribution of neutrons, which in turn depends on the primary ion distribution throughout the atmosphere, and the consequences of multiple neutron elastic scattering. Thus a complete modeling of neutron production needs to include ion transport, neutron production and scattering. Such a code was constructed by Hua and Lingenfelter (1987b) and improved and updated by Hua et al. (2002), and the consequences of varying loop and acceleration parameters was described in detail by Murphy et al. (2007). The code of Hua et al. (2002) is freely available and may be used to calculate 2.223 MeV line flux and neutron distributions expected at 1 AU under a wide variety of assumptions for both physical and acceleration parameters.

Neutron-producing reactions of fast ions have been enumerated by Hua and Lingenfelter (1987b), Murphy et al. (1987), Hua et al. (2002). The reaction  $p(p, n\pi^+)p'$  has a threshold of 270 MeV. It is a major contributor to total neutron yields for harder ion distributions (e.g., energy power law  $E^{-s}$  with  $s > 3$ ; Murphy et al. 2007). Thus neutron emission from flares will often be accompanied by pion-decay  $\gamma$ -rays.





**Fig. 24** Angular-dependent energy spectra of the escaping neutrons at the Sun (*solid curves*) and of those surviving at 1 AU (*dashed curves*) at different  $\cos \theta$  (*zenith angle*) compared to their production spectra at the Sun (*dotted curves*) in the case with no pitch-angle scattering of the ions (*left*) and of nearly saturated pitch-angle scattering (*right*). See Sect. 2.2.6 for a discussion of scattering. (From Hua et al. 2002). Reproduced by permission of the AAS

In contrast are the cross-sections for collisions involving heavier nuclei. Neutrons in these cases can be produced via evaporation processes, without the creation of pions, so cross-sections often have much lower threshold energies, below 1 MeV/nucleon in some cases. Neutron measurements thus have some potential for constraining heavy ion acceleration in flares. Especially with softer assumed ion energy distributions, neutron yields will depend sensitively on assumptions about fast ion abundances (Murphy et al. 2007).

Figure 24 shows neutron distributions produced by a population of fast ions, calculated using the code of Hua et al. (2002). A power-law ion energy distribution has been assumed,  $\propto E^{-s}$  with  $s = 2$ , and fast ion abundances representative of “gradual” particle events in space. No magnetic field convergence or MHD pitch-angle scattering have been assumed in the corona so ions precipitate freely to the dense atmosphere. The two figures show the energy distribution of neutrons produced in the solar atmosphere, and the energy distribution of neutrons that actually escape from the Sun. Above  $\sim 100$  MeV the neutron energy distribution reflects the primary ion energy distribution; for assumed power laws the neutron distribution is about one power of energy harder (Watanabe et al. 2005). At lower energies the neutron energy distribution is dominated by the relevant nuclear physics, particularly since many of the reactions are near threshold, and by neutron scattering in the atmosphere. Any factor that increases neutron production at greater depth (e.g., pitch-angle scattering in the strong limit which maximizes precipitation—Sect. 2.2.6) decreases the escaping neutron flux (Murphy et al. 2007).

## 4.4 Neutron Decay Products

Energetic protons from decaying flare neutrons were detected in space from SOL1980-06-21T02:00 (X2.6) (Evenson et al. 1990), SOL1982-06-03T13:26 (X8.0) (Evenson et al. 1983) and SOL1984-04-25T01:40 (X13) (Evenson et al. 1990). When the detector is not magnetically well connected to the flare site, neutron decay products may be clearly distinguished from flare-associated fast particles. An energetic proton “precursor” in SOL1990-05-24T21:45 (X9.3), arriving at the *GOES* spacecraft before the bulk of the flare-associated fast ions, has also been interpreted as a signature of decaying neutrons (Kocharov et al. 1996). Energetic neutron-decay electrons were observed from SOL1980-06-21T02:00 (X2.6) (Droegge et al. 1996).

Neutron-decay protons carry off most of the energy of their parent particles and are straightforwardly detected, given an appropriately placed spacecraft (Evenson et al. 1990). These advantages have to be weighed against the complication of accounting correctly for proton propagation in the turbulent interplanetary medium (Ruffolo 1991). Clearly they could offer a useful window on flare ion acceleration but we are aware of only one such claimed detection in Cycles 22 and 23 (Kocharov et al. 1996), and the argument in this case rested on fast proton arrival time rather than a lack of magnetic connection to the flare location.

## 4.5 Low-Energy Neutrons

Neutrons  $< 100$  MeV mostly decay long before they reach 1 AU. A neutron detector placed inside the orbit of Mercury would detect four to five orders of magnitude more neutrons in the 1–20 MeV energy range than a detector at 1 AU (in contrast to a detector of photons, which would gain roughly a single order of magnitude). There are several good scientific reasons to attempt neutron measurements in the inner heliosphere (e.g., Vilmer et al. 2001; Share et al. 2011). Much greater neutron fluxes will be measured from large flares by detectors on future inner-heliosphere space missions. As we mentioned above, heavy-ion populations may be usefully constrained, even though these do not produce narrow de-excitation lines. Constraints on ion acceleration in small flares and even the quiet Sun will be greatly strengthened. It should be emphasized that very recently, the *MESSENGER*<sup>6</sup> neutron spectrometer made the first claimed detection of 1–8 MeV solar neutrons continuously produced for several hours, in good consistency with the previously observed extended production of  $\gamma$ -ray line emissions or pion-decay radiation (see previous sections) (Feldman et al. 2010). However, local neutron production by solar energetic protons and  $\alpha$  particles cannot be completely excluded in these observations (see Share et al. 2011). These considerations motivate ongoing development of multiple scatter neutron detectors (Pirard et al. 2009), whose angular resolution in particular is crucial to discriminate genuine solar neutrons from those produced locally by interactions of solar energetic particles in the spacecraft.

# 5 Imaging Solar $\gamma$ -Rays

## 5.1 Introduction

The spatial distribution of  $\gamma$ -ray emission provides a channel of information on the acceleration and transport of energetic ions that is independent of spectroscopic analyses. As with

---

<sup>6</sup>Mercury Surface, Space ENvironment, GEochemistry, and Ranging.



electron bremsstrahlung, nuclear  $\gamma$ -rays disclose not where particle acceleration occurs, but rather where accelerated particles interact with the ambient atmosphere. Nevertheless it provides the only currently available method for placing accelerated ions in a solar magnetic context.

Prior to the launch of *RHESSI*, the only information on the spatial distribution of solar flare  $\gamma$ -ray emission originated from non-imaging observations of  $\gamma$ -ray line emissions from flares believed to be behind the limb. Vestrand and Forrest (1993), for example, reported a strong neutron-capture line emission from a behind-the-limb flare. Such an observation would imply that in addition to a compact source predicated in many models (e.g., Hua and Lingenfelter 1987a), the  $\gamma$ -ray line emission also originated from a large scale source, probably diffuse, that was far from the flare itself. Another event observed with strong prompt  $\gamma$ -ray line emission by Barat et al. (1994) was also believed to be associated with a behind-the-limb flare. In this case, the absence of neutron capture line emission as well as the smooth time profile of the prompt  $\gamma$ -ray line emission led to the conclusion that this emission was produced in the low corona at densities below  $1\text{--}5 \times 10^{11} \text{ cm}^{-3}$ . On the other hand, measurements of  $\gamma$ -ray line emissions (time profiles with respect to HXR time profiles) have been interpreted as generally consistent with their production in a compact region located in the chromosphere at densities  $\geq 10^{12} \text{ cm}^{-3}$  (e.g., Chupp 1996).

*RHESSI* has provided the first opportunity to locate the  $\gamma$ -ray emission from solar flares directly. *RHESSI*  $\gamma$ -ray imaging to date is based mainly on the narrow neutron-capture line at 2.223 MeV. This line is generated when fast neutrons, created by the interaction of accelerated protons and ions with the ambient atmosphere, are thermalized and subsequently captured by protons, producing deuterium and a narrow  $\gamma$ -ray line at 2.223 MeV. Narrow because of the absence of Doppler broadening, the line is an optimal choice for imaging for four reasons: (i) it is relatively intense; (ii) since locally-generated fast neutrons cannot thermalize in the limited mass of the spacecraft, there is no locally-generated background line emission; (iii) the line is narrow so that the continuum background is minimized; (iv) the narrowness of the line also limits the contribution of the solar electron-bremsstrahlung continuum to the resulting images. The multiple elastic collisions required for neutron thermalization require an average of  $\sim 100$  s (e.g., Murphy et al. 2007), which results in a characteristic time delay in this line compared to the prompt lines. Nevertheless, the corresponding average spatial offset between the primary interaction site and the capture site is only  $\sim 500$  km (R. Murphy, private communication). As a result, despite its two-step formation mechanism, a neutron-capture line image can faithfully indicate the site of the original nuclear interaction to within an arcsecond.

*RHESSI* imaging of nuclear  $\gamma$ -ray emission is based on time- and energy-tagged counts from the thick rear-segments of *RHESSI* detectors 6 and 9 (35'' and 183'' resolution, respectively). These are the only detectors for which the grids are sufficiently thick (2 and 3 cm, respectively) to modulate the high energy photon flux. Rear segments of the detectors are shielded from the intense flux of low energy X-rays, and so potential concerns about instrumental live time or pulse pileup effects (Smith et al. 2002) can be discounted. On the other hand, since only two of the nine collimators (RMCs) are relevant to imaging and their thick grids block some of the flux, the  $\gamma$ -ray throughput for such imaging is only about 14% of that for spectroscopy, and so the sensitivity for imaging is necessarily lower than that for spectroscopy. The count data provide the starting point for algorithms such as back-projection to reconstruct the image of the source (Hurford et al. 2002). The count statistics and the relatively few spatial frequencies measured do not permit *RHESSI* to reproduce complex source morphologies. However, the data are well-suited to the quantitative characterization of simple sources and  $\gamma$ -ray images for five flares have been obtained.

**Table 1** *RHESSI* Events with Neutron Capture Line Imaging

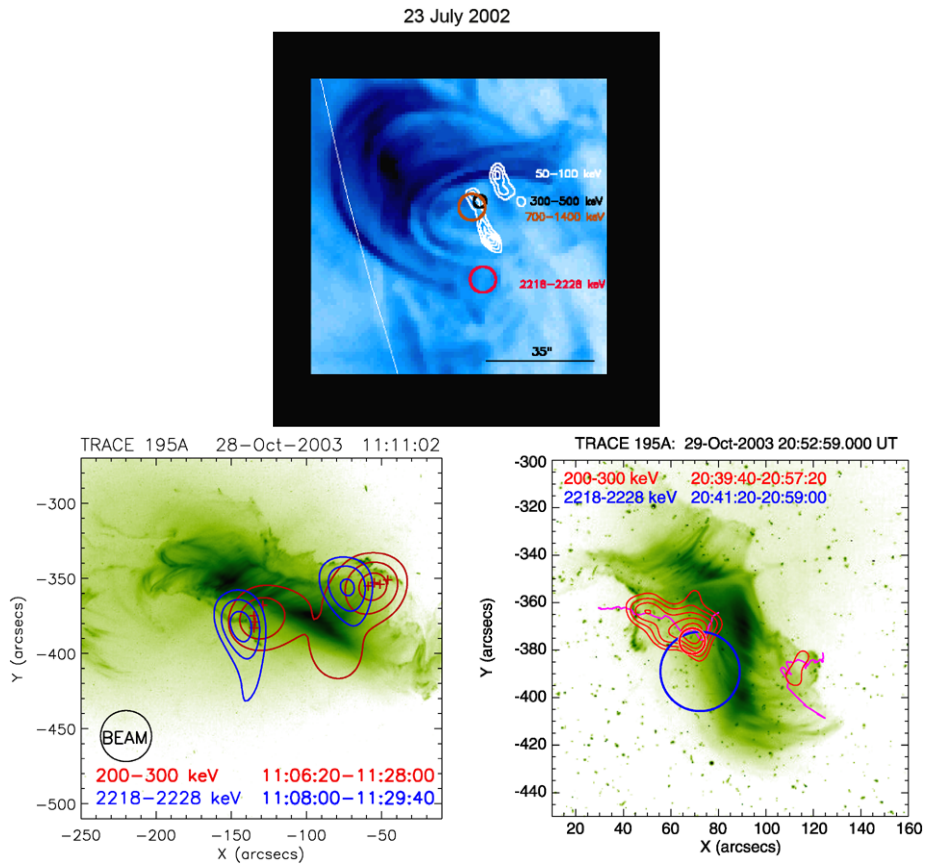
Parameter	2002-07-23	2003-10-28	2003-10-29	2003-11-02	2005-01-20
Time range	00:27:20– 00:43:20	11:06:20– 11:29:40	20:43:00– 21:00:00	17:16:00– 17:29:00	06:44:00– 06:56:00
<i>GOES</i> class	X4.8	X17	X10	X8	X7
Energy range (keV)	$2223 \pm 5$	$2223 \pm 5$	$2223 \pm 5$	$2223 \pm 5$	$2223 \pm 8$
Total counts in RMC 6, 9	336,240	2280,1643	463,313	781,557	961,518
Relative visibility RMC 6	$1.61 \pm 0.45$	$0.91 \pm 0.20$	...	$0.76 \pm 0.26$	$0.98 \pm 0.27$
Relative visibility RMC 9	$1.28 \pm 0.26$	$0.82 \pm 0.10$	$1.28 \pm 0.28$	$0.84 \pm 0.15$	$0.93 \pm 0.21$
Source size FWHM (arcsec) ( $2\sigma$ upper limit)	<22	<30	<94	<44	<20

## 5.2 Neutron-Capture Line Imaging

The complete set of images obtained to date is shown in Fig. 25 with quantitative details summarized in Table 1 (Hurford et al. 2003, 2006a, 2006b). Rather than deal with each flare in turn, we summarize these observations from three perspectives: the number of distinct spatial components; their size; and their location.

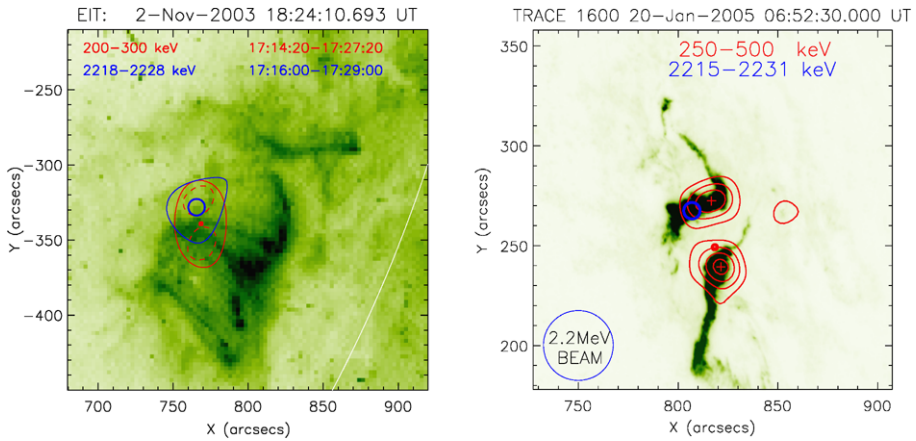
Considering first the number of distinct components, four of the five events presented a single, unresolved source whereas the fifth event, SOL2003-10-28T11:10 (X17.2), showed a double source that straddled an arcade of loops. This pattern does not necessarily imply, however, that double footpoint sources are an atypical feature of the  $\gamma$ -ray emission. Two conditions must be met to image a double footpoint source: the separation of the footpoints must be sufficiently large that they can be resolved with the available 35 arcsec resolution; and there must be sufficient signal-to-noise that two sources (rather than one) can be confidently detected. Referring to the count statistics in Table 1 and using the separation of the electron-bremsstrahlung components as a guide, SOL2003-10-28T11:10 (X17.2) was the only one of the five that satisfied both criteria and that event *did* display a double source. Had  $\gamma$ -ray emission from the other events also been in the form of double sources, this could not have been seen. Therefore, based on the number of observed components, there is no evidence to suggest that the true neutron-capture line sources are predominantly single sources, a result that would be in contrast to typical hard X-ray double sources.

A second perspective is provided by the estimates of the size of the unresolved components. Such estimates can be obtained from comparisons of the total observed line flux to that imaged in the unresolved source. The ratio of imaged flux to total flux, called the relative visibility, can be used to put upper limits on the size of an unresolved source. Ignoring the modulation, the total number of observed counts in the line provides a direct indication of the total, spatially-integrated flux in the narrow energy range associated with the line. Such counts are due to a combination of real solar neutron-capture line events, continuum



**Fig. 25** Respective locations of  $\gamma$ -ray sources at 2.223 MeV and of hard X-ray sources observed with *RHESSI* for different flares. The SOL2002-07-23T00:35 (X4.8) event; the circles represent the  $1\sigma$  errors for the 300–500 keV (black), 700–1400 keV (red) and 2218–2228 keV (pink) maps made with identical parameters. The white contours show the high resolution 50–100 keV map with 3 arcsec resolution. The background is a *TRACE* image showing the post-flare loops (adapted from Hurford et al. 2003). The SOL2003-10-28T11:10 (X17.2) event; overlay of contours at 50%, 70%, and 90% of 35'',  $\gamma$ -ray images made with detectors 6 and 9 on a *TRACE* image. The red plus signs indicate 200–300 keV footpoint locations at different times. The SOL2003-10-29T20:49 (X10.0) event; fine red contours: (50–90%) of the 200–300 keV high resolution maps superposed on a *TRACE* image. The purple line indicates the motions of the 200–300 keV footpoints. Thick red and blue circles: centroid locations with  $1\sigma$  error for detector 9 imaging at 200–300 and 2218–2228 keV, respectively. The SOL2003-11-02T17:25 (X8.3) event; overlay of 200–300 keV (red contours) and 2218–2228 keV (blue contours) sources on a postflare *SOHO/EIT* image. The dashed and thin solid red contours (50%) show the result of 200–300 keV mapping with 7'' and 35'' respectively. The thin blue contour (50%) is the corresponding map at 2218–2228 keV made with detectors 6 and 9. The thicker  $1\sigma$  error circles show the detector 6 source centroid location (adapted from Hurford et al. 2006b). The SOL2005-01-20T07:01 (X7.1) event; contours of the 250–500 keV emission overlaid on a *TRACE* image and centroids (in red and blue) of the map performed in the 250–500 keV and 2215–2231 keV range

solar emission and background. Since the number of such counts that are due to solar continuum or background continuum can be reliably estimated from energy ranges just above 2.223 MeV, an accurate determination of the spatially integrated solar neutron-capture line flux can be made, independent of background models. The imaged flux does not contain



**Fig. 25** (Continued)

any unmodulated background, but could include a contribution from the solar continuum. Although this contribution could be estimated by imaging in a narrow energy range above 2.223 MeV, it is easy to demonstrate that, thanks to the narrow energy range required for imaging the neutron-capture line (10–16 keV), its contribution is negligible. Note that since the relative visibilities are estimated by comparing the imaged to total counts observed with a given rotating modulation collimator, the measurement of relative visibilities is independent of potential errors in estimating the detector efficiency.

The observed relative visibilities (Table 1) show that in all cases the flux in the unresolved neutron-capture line source(s) is consistent with the spatially-integrated flux. This implies that there is no evidence for a large-scale diffuse component. By assuming a Gaussian source model, upper limits to the FWHM source diameters are obtained that correspond to a few tens of arcseconds.

A third perspective on the neutron-capture line sources is provided by their location. An unanticipated result was that in some, if not all, cases, the neutron-capture line sources were not co-spatial with the corresponding electron-bremsstrahlung sources. Since the character and statistical significance of the displacements differed from event to event, we first consider them individually. For SOL2003-10-28T11:10 (X17.2), double footpoint  $\gamma$ -ray sources straddled the same loop arcade as the electron sources. However, they were displaced along the loop arcade by  $14''$  and  $17'' \pm 5''$  respectively (Fig. 25). For the other events, the location of the single unresolved sources are expressed as a centroid location with appropriate statistical errors. For SOL2003-07-23T00:35 (X4.8), the neutron-capture line source was displaced by  $25'' \pm 5''$  from the corresponding electron source. Although it was not located near any obvious EUV or  $H\alpha$  line emission, its location was consistent with the footpoint of a post-flare loop. For SOL2005-01-20T07:01 (X7.1) the neutron source was clearly associated with one of the two electron-bremsstrahlung footpoints. For SOL2003-11-02T17:25 (X8.3) the location also appeared to be preferentially associated with one of the two electron-bremsstrahlung footpoints, although in this case the displacement of the 2.2 MeV emission compared to the centroid of the electron-bremsstrahlung source was significant only at the  $2\sigma$  level. For SOL2003-10-29T20:49 (X10.0), the measured separation of the corresponding centroids was  $13'' \pm 17''$ , so a separation, if any, could not be established. In summary, statistically significant displacements were observed in three of the five events, marginally in a fourth but not seen in the fifth and statistically least significant event.

### 5.3 Other $\gamma$ -Ray Imaging

In addition to the neutron-capture line, imaging of the  $\gamma$ -ray continuum in the 200–800 keV range dominated by electron bremsstrahlung has also been reported (Hurford et al. 2005, 2006a; Krucker et al. 2008b). At higher energies, where nuclear emission is more important, only *RHESSI* detector 9 (183'') was able to modulate effectively with the events studied. The tentative explanation for the reduced efficiency of detector 6 modulation for imaging in a broad energy band at high energies is that photons passing through front grid slits into rear grid slats can scatter into the detector and be counted as part of the modulated flux. The modulation of such events, however, is 180° out of phase with that of the valid (front slit-to-rear slit) events and so tends to reduce the effective modulation efficiency. This issue is a factor for detector 6 (but not detector 9) since the detector 6 grids are not thick enough to suppress the scattered photons. This issue is not relevant for neutron-capture line imaging since photons that are scattered by the front grid scatter away from the narrow window used for spectral analysis.

Nevertheless, the centroid locations obtained for the SOL2005-01-20T07:01 (X7.1)  $\gamma$ -ray continuum with detector 9 in four bands between 600 keV and 8 MeV were of interest particularly because of their energy dependence. At the lowest energies in this band, their centroid locations matched that of the centroid of the X-ray electron-bremsstrahlung source. However, at higher energies where the nuclear contribution became more important, the  $\gamma$ -ray continuum location trended toward the neutron-capture line centroid (Hurford et al. 2006a). Such a pattern is consistent with the displacement between the sites of electron-bremsstrahlung collisions and nuclear interactions.

Imaging in a narrow energy range surrounding the 511 keV line was also attempted for SOL2005-01-20. Images obtained independently from the front and rear segments of detector 9 were found to be self-consistent in terms of strength and intensity. However, modeling suggests that although a narrow 500–520 keV energy range was used, the imaged fluence was dominated by the electron-bremsstrahlung continuum.

### 5.4 Discussion

One well-established result of the neutron-capture line mapping was that the flux for all five events was consistent with coming from compact source component(s) in the flaring active region. This would suggest that the flare-associated  $\gamma$ -ray emission was associated with flare-accelerated ions, and not with ions that are shock-accelerated at high altitudes. If that were the case, the ions might be expected to interact with ambient material in a more diffuse pattern, perhaps at some distance from the flare. This shows that the  $\gamma$ -ray emission does not result from the interaction of solar energetic particles with the solar wind as alternatively proposed by Kahler and Ragot (2008).

Given the resolution and sensitivity of the imaging and the limited sample of events, there is no evidence that the morphologies of nuclear  $\gamma$ -ray sources (e.g., double vs. single footpoints) differ systematically from that of hard X-ray sources.

The most striking result, of course, is the differences in the locations of the electron-bremsstrahlung and neutron-capture line sources. Hypotheses that attempt to account for such differences generally fall into three categories: (i) the displacement is an instrumental artifact; (ii) the displacement has a solar, but relatively mundane origin; or (iii) the displacement reflects differences in acceleration and/or transport processes for flare-accelerated ions and electrons.

We first consider the possibility that the displacements are an artifact of the imaging process. There are three independent arguments indicating that this is highly unlikely. First,

the measurements of the locations of the sources at two different energy regimes were based on analyses that differed only in the energy of the counts upon which the imaging is based. The same time interval, detector grid optics, aspect solution, imaging algorithm and imaging parameters were used for both so that the potential for systematic co-location errors can be discounted. Second, if the relative displacements had a systematic instrumental origin they would likely be with respect to the only axis of symmetry associated with the imaging process, namely the line joining the direction of the rotation axis to that of the flare. However, the displacements were neither systematically parallel to or perpendicular to this direction. Third, in all but SOL2002-07-23T00:35, the direction of the displacement, if any, was in a magnetically significant solar direction, as opposed to some randomly-chosen direction. As result of these three considerations, it is considered highly unlikely that the displacements have an instrumental origin.

A second class of potential explanations for the displacements is that they have a solar, but relatively mundane explanation. One such explanation might be based on the average distance between the locations of the original nuclear interaction and that of the neutron-capture process. However, as mentioned, such a displacement is expected to be less than  $\sim 1''$ . Another possibility is that the displacement is related to the time-delay associated with thermalization. This scenario notes that the neutron-capture line image reflects the location of nuclear interactions that occurred  $\sim 100$  seconds earlier. To investigate this hypothesis, for each event the neutron-capture line images were compared both to contemporaneous electron-bremsstrahlung images and to electron-bremsstrahlung images made with integration times shifted by 100 s. No significant differences were observed.

These considerations therefore support a solar-physics-based interpretation of the displacement, based on a difference in acceleration and/or propagation between accelerated ions and electrons. Several such interpretations have been put forward. Emslie et al. (2004b) discussed a stochastic acceleration mechanism whereby ions are preferentially accelerated in larger loops than electrons. Imaging for SOL2002-07-23 (Hurford et al. 2003) would support this interpretation. The interpretation of time delays between  $\gamma$ -ray lines and hard X-rays by trap-plus-precipitation models for the same flare (Dauphin and Vilmer 2007) also confirm the fact that ions are injected in longer loops than electrons.

However, such an explanation would not appear to be appropriate for the SOL2003-10-28T11:10 (X17.2) where the footpoint separations for the electrons and ions were similar. Gradient and curvature drifts were also considered by Hurford et al. (2006b), but the predicted displacements between the ions and electrons were two orders of magnitude too small. Another possibility, raised by Litvinenko and Somov (1993), was that electric-field acceleration would lead to separation of particles with opposite charge (Zharkova and Gordovskyy 2004). Its potential applicability in these cases has not yet been pursued.

In two of the five events (SOL2005-01-20T17:25 and SOL2003-11-02T17:25) the ions were preferentially associated with one of the two electron bremsstrahlung footpoints. This raises the possibility that at least for these two events, the different footpoint weighting between the two species might be attributed to differences between electron and ion propagation in asymmetrical fields. This would be a result of the significant differences in the scattering properties and ionization-loss stopping distances between the accelerated electrons and ions. Modeling to support such a hypothesis has not been carried out, however.

With only five imaged events, it is too early to establish the systematics of the displacements. It is also apparent that *RHESSI*'s  $35''$  resolution is insufficient to resolve the individual  $\gamma$ -ray sources. Therefore, it is to be hoped that *RHESSI* will observe additional events in the coming maximum so that their systematic properties can be further explored and that new instrumentation will become available with improved angular resolution and sensitivity in the  $\gamma$ -ray regime.



## 6 Conclusions and Future Perspectives

Two particular observational advances characterize the *RHESSI* era: spectral resolution adequate to reveal line shapes and to better constrain the line fluences; and  $\gamma$ -ray imaging. The former provides in principle previously inaccessible information on proton and  $\alpha$ -particle energy and angular distributions. The latter has revealed the sites of ion interaction and neutron production and most dramatically shown that they do not coincide with the HXR-identified locations of electron interaction. Also, it has not confirmed the *SMM*-era suggestion that 2.223 MeV line emission might be produced over an extended region (Vestrand and Forrest 1993). The observations are also not consistent with a production of  $\gamma$ -rays through the interaction of solar energetic protons with the solar wind as examined by Kahler and Ragot (2008). We may look forward to further advances, both observational (e.g., with GRIPS; Shih et al. 2009a), and theoretical, over the next few years.

At the same time as *RHESSI* as well as *INTEGRAL*/SPI observations have brought pioneering observations of  $\gamma$ -ray spectra at high resolution, it was also realized that the determination of all the parameters which characterize the  $\gamma$ -ray spectrum (target abundances and ionization states, energy and angular distributions of energetic ions, relative abundances of accelerated  $\alpha$  particles and heavier ions, transport and energy losses of energetic ions between the acceleration region and interaction region if not co-spatial, etc.) is still very challenging. In particular, the different parameters cannot be determined independently from the assumptions made on others: both ambient abundances and parameters of energetic particles must be deduced together even in the “simple” analysis of a  $\gamma$ -ray spectrum. Combining the information from narrow line shapes and line fluence ratios can, however, help to disentangle the effects of the different parameters. The use of lines purely produced by  $\alpha$  particles (in particular the line at 0.339 MeV formed by the interaction of  $\alpha$  particles with iron) would also considerably improve the analysis of  $\gamma$ -ray spectra by providing cleaner constraints on the distribution of  $\alpha$  particles. A few attempts had been made at the time of *SMM*, but no further studies have been published since then based on spectra obtained at higher resolution. This is also the case for the lines produced by energetic  $^3\text{He}$  on ambient  $^{16}\text{O}$  around 1 MeV. Line shapes and widths of the 511 keV annihilation line and positronium continuum have been measured at high spectral resolution leading for a few flares to unexpected combination of chromospheric densities and transition region temperatures for the annihilation region. Taking this into account in the future, the production and annihilation of positrons over a broad range of heights and thus of conditions in the medium is probably the next step to undertake to better understand the observations of shapes and widths of the annihilation line and continuum.

Heavier ( $Z > 2$ ) accelerated ion species are harder to diagnose but they may nonetheless be significant in overall flare energetics (Murphy et al. 1997; Emslie et al. 2004a). The detailed treatment now available of the unresolved component of nuclear  $\gamma$ -rays should bear significantly on this question (Murphy et al. 2009). Heavier species are prolific producers of free neutrons via evaporation-type reactions so instruments planned to measure, on future inner-heliosphere missions, neutrons in the 1–10 MeV range not yet explored systematically (e.g., Wolf et al. 2009) will yield new constraints.

Do all flares accelerate ions? It seems unlikely that they do not, but all flares do not produce detectable  $\gamma$ -ray lines. *RHESSI*'s eight years of operation have accumulated a data set bearing on this question (Shih et al. 2009b). A good correlation is found between the energy content of electrons above 300 keV and protons above 30 MeV suggesting a strong correlation between the acceleration of high-energy electrons and  $\gamma$ -ray line producing ions. A larger variation is found between the energy content of electrons above 20 keV and the

ion energy content. Some episodes in flares or some specific flares exhibit indeed higher relative numbers of electrons with respect to ions. Based on the *RHESSI* data set, it was also found that there is a strong link between the production of energetic ions and sub-relativistic electrons, but only when a threshold in the production of ions is attained. In conclusion, while the acceleration of protons above 30 MeV is related to the acceleration of relativistic electrons, the acceleration of sub-relativistic electrons is linked to the acceleration of these energetic protons and relativistic electrons, but only when a threshold of energetic ions and electrons is reached. These conclusions must be kept in mind when addressing acceleration mechanisms in flares. The content in low energy ions from flares is mostly unknown and no strong constraints have been derived on the production of low energy protons in solar flares. Attempts to constrain fluxes from low energy proton capture lines could be a way to address this issue. Another promising way could be to detect suprathermal ions through charge exchange with the ambient hydrogen (see the first detection of energetic neutral hydrogen atoms in a solar flare by Mewaldt et al. 2009).

Apart from *CORONAS-F/SONG* (e.g., Kuznetsov et al. 2006), solar observations at the highest  $\gamma$ -ray energies have been lacking in recent years. This is one of the only ways (with the detection of neutrons) to address the issue of the highest energetic particles accelerated in solar flares and to determine the shape of the energetic ion spectrum over several decades of energy range. The global network of neutron detectors thus plays at the present time a particularly important role, yielding otherwise unobtainable information on ion energy distributions in the GeV energy range (e.g., Masson et al. 2009). As the solar cycle picks up, *Fermi* observations of the high-energy continuum should become critical to probing the highest ion energies attained in flares. Further observations of flares at submillimeter (and even shorter) wavelengths (see, e.g., Klein et al. 2006) as well as the search for X-ray inverse Compton radiation in coronal sources (MacKinnon and Mallik 2010) could additionally provide information on electrons and positrons produced in the 10–100 MeV energy range in flares.

Recent years have seen a re-examination of the thick-target interpretation of flare HXR (Fletcher and Hudson 2008; Brown et al. 2009). Since HXR-emitting electrons are believed to embody a large fraction of the total energy released in the flare, this is a question that goes beyond interpretation of radiation signatures to the heart of the flare energy release process. The existing thick-target models assume that electrons radiate negligibly in the (coronal) acceleration region, and that they slow down collisionally in the (thick-target, chromospheric) interaction region. If acceleration and interaction regions were one and the same, fewer electrons would be needed to account for HXR. A similar reconsideration of  $\gamma$ -ray source regions may prove necessary.

**Acknowledgements** This chapter is dedicated to Reuven Ramaty who was one of the initiators of the field of high energy physics in solar flares, inducting two of us (NV and ALM) into the field and inspiring many other high energy solar physicists. The authors are very grateful to the organizers of the series of *RHESSI* workshops and to the team leaders of the working group on energetic ions and particle acceleration who stimulated the many discussions and collaborations that led to many recent results summarized in this chapter. We would like to express our special thanks to G. Share, R. Murphy, V. Tatischeff and K. Watanabe for useful suggestions for this chapter and discussions. Nicole Vilmer acknowledges support from the Centre National d'Etudes Spatiales (CNES) and from the French program on Solar-Terrestrial Physics (PNST) of INSU/CNRS for the participation to the *RHESSI* project. Collaborative work on the chapter in Meudon was supported by a British Council Franco-British Alliance grant. Solar physics research in Glasgow is supported by an STFC Rolling Grant. We are grateful to several institutions for granting permission for the use of previously published figures. In addition to those noted in figure captions, we also acknowledge the following figures from A&A, reproduced with permission (©) ESO: Fig. 14 (Harris et al., 461, 723, 2007); Figs. 16 and 17 (Kiener et al., 445, 725, 2006). The following figures are reproduced with kind permission from Springer Science+Business Media: Fig. 1 (Suri et al., Solar Physics 43, 415, 1975); Fig. 22 (Masson et al., Solar Physics 257, 305, 2009).



## References

- V.V. Akimov, V.G. Afanasev, A.S. Belousov, I.D. Blokhintsev, V.A. Volzhenskaya, L.F. Kalinkin, N.G. Leikov, V.E. Nesterov, A.M. Galper, S.A. Voronov, V.M. Zemskov, V.G. Kirillov-Ugryumov, B.I. Luchkov, Y.V. Ozerov, A.V. Popov, V.A. Rudko, M.F. Runtso, V.Y. Chesnokov, L.V. Kurnosova, M.A. Rusakovich, N.P. Topchiev, M.I. Fradkin, E.I. Chuikin, V.Y. Tugaenko, T.N. Tian, V.I. Ishkov, M. Gros, I. Grenier, E. Barouch, P. Wallin, A.R. Baser-Bachi, J.M. Lavigne, J.F. Olive, J. Juchniewicz, *Sov. Astron. Lett.* **18**, 69 (1992)
- D. Alexander, P.P. Dunphy, A.L. MacKinnon, *Sol. Phys.* **151**, 147 (1994)
- M. Asplund, N. Grevesse, A.J. Sauval, in *Cosmic Abundances as Records of Stellar Evolution and Nucleosynthesis*, ed. by T.G. Barnes III, F.N. Bash. Astronomical Society of the Pacific Conference Series, vol. 336 (2005), p. 25
- C. Barat, G. Trottet, N. Vilmer, J. Dezalay, R. Talon, R. Sunyaev, O. Terekhov, A. Kuznetsov, *Astrophys. J.* **425**, L109 (1994)
- J.W. Bieber, J. Clem, P. Evenson, R. Pyle, D. Ruffolo, A. Sáiz, *Geophys. Res. Lett.* **32**, 3 (2005)
- L. Biermann, O. Haxel, A. Schlüter, *Z. Naturforsch. Teil A* **6**, 47 (1951)
- J.W. Brosius, *Astrophys. J.* **555**, 435 (2001)
- J.C. Brown, R. Turkmani, E.P. Kontar, A.L. MacKinnon, L. Vlahos, *Astron. Astrophys.* **508**, 993 (2009)
- R.C. Canfield, C.-R. Chang, *Astrophys. J.* **295**, 275 (1985)
- E.L. Chupp, *Annu. Rev. Astron. Astrophys.* **22**, 359 (1984)
- E.L. Chupp, in *American Institute of Physics Conference Series*, vol. 374, ed. by R. Ramaty, N. Mandzhavidze, X.-M. Hua (1996), p. 3
- E.L. Chupp, H. Debrunner, E. Flueckiger, D.J. Forrest, F. Golliez, G. Kanbach, W.T. Vestrand, J. Cooper, G. Share, *Astrophys. J.* **318**, 913 (1987)
- E.L. Chupp, P.P. Dunphy, in *High Energy Solar Physics Workshop - Anticipating HESSI*, ed. by R. Ramaty, N. Mandzhavidze. Astronomical Society of the Pacific Conference Series, vol. 206 (2000), p. 400
- E.L. Chupp, J.M. Ryan, *Res. Astron. Astrophys.* **9**, 11 (2009)
- E.L. Chupp, D.J. Forrest, P.R. Higbie, A.N. Suri, C. Tsai, P.P. Dunphy, *Nature* **241**, 333 (1973)
- E.L. Chupp, D.J. Forrest, J.M. Ryan, M.L. Cherry, C. Reppin, G. Kanbach, E. Rieger, K. Pinkau, G.H. Share, R.L. Kinzer, *Astrophys. J.* **244**, L171 (1981)
- E.L. Chupp, D.J. Forrest, J.M. Ryan, J. Heslin, C. Reppin, K. Pinkau, G. Kanbach, E. Rieger, G.H. Share, *Astrophys. J.* **263**, L95 (1982)
- E.L. Chupp, G. Trottet, H. Marschhauser, M. Pick, L. Soru-Escaut, E. Rieger, P.P. Dunphy, *Astron. Astrophys.* **275**, 602 (1993)
- E.W. Cliver, N.B. Crosby, B.R. Dennis, *Astrophys. J.* **426**, 767 (1994)
- C. Dauphin, N. Vilmer, *Astron. Astrophys.* **468**, 289 (2007)
- H. Debrunner, E.O. Flückiger, P. Stein, *Nucl. Instrum. Methods Phys. Res., Sect. A, Accel. Spectrom. Detect. Assoc. Equip.* **278**, 573 (1989)
- H. Debrunner, J.A. Lockwood, C. Barat, R. Buetikofer, J.P. Dezalay, E. Flueckiger, A. Kuznetsov, J.M. Ryan, R. Sunyaev, O.V. Terekhov, G. Trottet, N. Vilmer, *Astrophys. J.* **479**, 997 (1997)
- H. Debrunner, J.A. Lockwood, J.M. Ryan, *Astrophys. J.* **409**, 822 (1993)
- B.L. Dingus, P. Sreekumar, D.L. Bertsch, C.E. Fichtel, R.C. Hartman, S.D. Hunter, D.J. Thompson, E.J. Schneid, K.T.S. Brazier, G. Kanbach, C. von Montigny, H.A. Mayer-Hasselwander, Y.C. Lin, P.F. Michelson, P.L. Nolan, D.A. Kniffen, J.R. Mattox, in *High-Energy Solar Phenomena - a New Era of Spacecraft Measurements*, ed. by J. Ryan, W.T. Vestrand. American Institute of Physics Conference Series, vol. 294 (1994), p. 177
- J.J. Drake, P. Testa, *Nature* **436**, 525 (2005)
- W. Droege, D. Ruffolo, B. Klecker, *Astrophys. J.* **464**, L87+ (1996)
- P.P. Dunphy, in *International Cosmic Ray Conference*, vol. 6 (1999), p. 9
- P.P. Dunphy, E.L. Chupp, in *International Cosmic Ray Conference*, vol. 3 (1991), p. 65
- P.P. Dunphy, E.L. Chupp, in *Particle Acceleration in Cosmic Plasmas*, ed. by G.P. Zank, T.K. Gaisser. American Institute of Physics Conference Series, vol. 264 (1992), p. 253
- P.P. Dunphy, E.L. Chupp, D.L. Bertsch, E.J. Schneid, S.R. Gottesman, G. Kanbach, *Sol. Phys.* **187**, 45 (1999)
- A.G. Emslie, J.C. Brown, A.L. MacKinnon, *Astrophys. J.* **485**, 430 (1997)
- A.G. Emslie, H. Kucharek, B.R. Dennis, N. Gopalswamy, G.D. Holman, G.H. Share, A. Vourlidas, T.G. Forbes, P.T. Gallagher, G.M. Mason, T.R. Metcalf, R.A. Mewaldt, R.J. Murphy, R.A. Schwartz, T.H. Zurbuchen, *Journal of Geophysical Research (Space). Physics* **109**, 10104 (2004a)
- A.G. Emslie, J.A. Miller, J.C. Brown, *Astrophys. J.* **602**, L69 (2004b)
- P. Evenson, R. Kroeger, P. Meyer, D. Reames, *Astrophys. J. Suppl. Ser.* **73**, 273 (1990)
- P. Evenson, P. Meyer, K.R. Pyle, *Astrophys. J.* **274**, 875 (1983)

- W.C. Feldman, D.J. Lawrence, J.O. Goldsten, R.E. Gold, D.N. Baker, D.K. Haggerty, G.C. Ho, S. Krucker, R.P. Lin, R.A. Mewaldt, R.J. Murphy, L.R. Nittler, E.A. Rhodes, J.A. Slavin, S.C. Solomon, R.D. Starr, F. Vilas, A. Vourlidas, *J. Geophys. Res.* **115**, 1102 (2010)
- N.M. Firstova, V.I. Polyakov, A.V. Firstova, *Sol. Phys.* **249**, 53 (2008)
- G.D. Fleishman, E.P. Kontar, *Astrophys. J.* **709**, L127 (2010)
- L. Fletcher, H.S. Hudson, *Astrophys. J.* **675**, 1645 (2008)
- D.J. Forrest, in *Positron-Electron Pairs in Astrophysics*, ed. by R. Ramaty. American Institute of Physics Conference Series, vol. 101 (1983), p. 3
- D.J. Forrest, W.T. Vestrand, E.L. Chupp, E. Rieger, J.F. Cooper, G.H. Share, in *International Cosmic Ray Conference*, vol. 4, ed. by F.C. Jones, (1985), p. 146
- A.H. Gabriel, *Philos. Trans. R. Soc. Lond. Ser. A, Math. Phys. Sci.* **281**, 339 (1976)
- W.Q. Gan, *Adv. Space Res.* **35**, 1833 (2005)
- M. Gros, V. Tatischeff, J. Kiener, B. Cordier, C. Chapuis, G. Weidenspointner, G. Vedrenne, A. von Kienlin, R. Diehl, A. Bykov, M.N. Méndez, in *5th INTEGRAL Workshop on the INTEGRAL Universe*, ed. by V. Schoenfelder, G. Lichti, C. Winkler. ESA Special Publication, vol. 552 (2004), p. 669
- M.J. Harris, V. Tatischeff, J. Kiener, M. Gros, G. Weidenspointner, *Astron. Astrophys.* **461**, 723 (2007)
- J.C. Henoux, G. Chambe, D. Smith, D. Tamres, N. Feautrier, M. Rovira, S. Sahal-Brechot, *Astrophys. J. Suppl. Ser.* **73**, 303 (1990)
- Holman et al., *Space Sci. Rev.* (2011, this issue). doi:[10.1007/s11214-010-9680-9](https://doi.org/10.1007/s11214-010-9680-9)
- X. Hua, R.E. Lingenfelter, *Sol. Phys.* **113**, 229 (1987a)
- X.-M. Hua, R.E. Lingenfelter, *Sol. Phys.* **107**, 351 (1987b)
- X. Hua, R. Ramaty, R.E. Lingenfelter, *Astrophys. J.* **341**, 516 (1989)
- X. Hua, B. Kozlovsky, R.E. Lingenfelter, R. Ramaty, A. Stupp, *Astrophys. J. Suppl.* **140**, 563 (2002)
- H.S. Hudson, T. Bai, D.E. Gruber, J.L. Matteson, P.L. Nolan, L.E. Peterson, *Astrophys. J.* **236**, L91 (1980)
- E. Hulot, N. Vilmer, E.L. Chupp, B.R. Dennis, S.R. Kane, *Astron. Astrophys.* **256**, 273 (1992)
- E. Hulot, N. Vilmer, G. Trottet, *Astron. Astrophys.* **213**, 383 (1989)
- G.J. Hurford, E.J. Schmahl, R.A. Schwartz, A.J. Conway, M.J. Aschwanden, A. Csillaghy, B.R. Dennis, C. Johns-Krull, S. Krucker, R.P. Lin, J. McTiernan, T.R. Metcalf, J. Sato, D.M. Smith, *Sol. Phys.* **210**, 61 (2002)
- G.J. Hurford, R.A. Schwartz, S. Krucker, R.P. Lin, D.M. Smith, N. Vilmer, *Astrophys. J.* **595**, L77 (2003)
- G.J. Hurford, S. Krucker, R.P. Lin, R.A. Schwartz, D.M. Smith, AGU Fall Meeting AbstractsA313+ (2005)
- G.J. Hurford, S. Krucker, R.P. Lin, R.A. Schwartz, G.H. Share, D.M. Smith, *Bull. Am. Astron. Soc.* **38**, 255 (2006a)
- G.J. Hurford, S. Krucker, R.P. Lin, R.A. Schwartz, G.H. Share, D.M. Smith, *Astrophys. J.* **644**, L93 (2006b)
- S.W. Kahler, B.R. Ragot, *Astrophys. J.* **675**, 846 (2008)
- G. Kanbach, D.L. Bertsch, C.E. Fichtel, R.C. Hartman, S.D. Hunter, D.A. Kniffen, P.W. Kwok, Y.C. Lin, J.R. Mattox, H.A. Mayer-Hasselwander, *Astron. Astrophys. Suppl.* **97**, 349 (1993)
- P. Kaufmann, J. Raulin, *Phys. Plasmas* **13**(7), 070701 (2006)
- P. Kaufmann, J. Raulin, C.G.G. de Castro, H. Levato, D.E. Gary, J.E.R. Costa, A. Marun, P. Pereyra, A.V.R. Silva, E. Correia, *Astrophys. J.* **603**, L121 (2004)
- C.F. Kennel, H.E. Petschek, *J. Geophys. Res.* **71**, 1 (1966)
- J. Kiener, N. de Séréville, V. Tatischeff, *Phys. Rev. C* **64**(2), 025803 (2001)
- J. Kiener, M. Gros, V. Tatischeff, G. Weidenspointner, *Astron. Astrophys.* **445**, 725 (2006)
- K. Klein, G. Trottet, G. Molodij, A. Sémary, in *Visions for Infrared Astronomy, Instrumentation, Measure, Métrologie*, ed. by V. Coudé du Foresto, D. Rouan, G. Rousset (2006), p. 49
- L.G. Kocharov, G.A. Kovaltsov, G.E. Kocharov, E.I. Chuikin, I.G. Usoskin, M.A. Shea, D.F. Smart, V.F. Melnikov, T.S. Podstrigach, T.P. Armstrong, *Sol. Phys.* **150**, 267 (1994)
- L.G. Kocharov, J. Torsti, R. Vainio, G.A. Kovaltsov, I.G. Usoskin, *Sol. Phys.* **169**, 181 (1996)
- L. Kocharov, H. Debrunner, G. Kovaltsov, J. Lockwood, M. McConnell, P. Nieminen, G. Rank, J. Ryan, V. Schoenfelder, *Astron. Astrophys.* **340**, 257 (1998)
- B. Kozlovsky, R.E. Lingenfelter, R. Ramaty, *Astrophys. J.* **316**, 801 (1987)
- B. Kozlovsky, R.J. Murphy, R. Ramaty, *Astrophys. J. Suppl. Ser.* **141**, 523 (2002)
- B. Kozlovsky, R.J. Murphy, G.H. Share, *Astrophys. J.* **604**, 892 (2004)
- S. Krucker, M. Battaglia, P.J. Cargill, L. Fletcher, H.S. Hudson, A.L. MacKinnon, S. Masuda, L. Sui, M. Tomczak, A.L. Veronig, L. Vlahos, S.M. White, *Astron. Astrophys. Rev.* **16**, 155 (2008a)
- S. Krucker, G.J. Hurford, A.L. MacKinnon, A.Y. Shih, R.P. Lin, *Astrophys. J.* **678**, L63 (2008b)
- K. Kudela, S.N. Kuznetsov, N. Myagkova, B.Y. Yushkov, in *International Cosmic Ray Conference*, vol. 6 (2003), p. 3183
- S.N. Kuznetsov, V.G. Kurt, I.N. Myagkova, B.Y. Yushkov, K. Kudela, *Sol. Syst. Res.* **40**, 104 (2006)
- S.N. Kuznetsov, V.G. Kurt, B.Y. Yushkov et al., in *International Cosmic Ray Conference*, vol. 1 (2008), p. 121

- F.L. Lang, C.W. Wertz, in *Gamma-Ray Line Astrophysics*, ed. by P. Durouchoux, N. Prantzos. American Institute of Physics Conference Series, vol. 232 (1991), p. 445
- N.G. Leikov, V.V. Akimov, V.A. Volzhenskaia, L.F. Kalinkin, V.E. Nesterov, A.M. Gal'Per, V.M. Zemskov, I.V. Ozerov, N.P. Topchiev, M.I. Fradkin, *Astron. Astrophys. Suppl.* **97**, 345 (1993)
- R.P. Lin, B.R. Dennis, G.J. Hurford, D.M. Smith, A. Zehnder, P.R. Harvey, D.W. Curtis, D. Pankow, P. Turin, M. Bester, A. Csillaghy, M. Lewis, N. Madden, H.F. van Beek, M. Appleby, T. Raudorf, J. McTiernan, R. Ramaty, E. Schmahl, R. Schwartz, S. Krucker, R. Abiad, T. Quinn, P. Berg, M. Hashii, R. Sterling, R. Jackson, R. Pratt, R.D. Campbell, D. Malone, D. Landis, C.P. Barrington-Leigh, S. Slassi-Sennou, C. Cork, D. Clark, D. Amato, L. Orwig, R. Boyle, I.S. Banks, K. Shirey, A.K. Tolbert, D. Zarro, F. Snow, K. Thomsen, R. Henneck, A. Mchedlishvili, P. Ming, M. Fivian, J. Jordan, R. Wanner, J. Crubb, J. Preble, M. Matraga, A. Benz, H. Hudson, R.C. Canfield, G.D. Holman, C. Crannell, T. Kosugi, A.G. Emslie, N. Vilmer, J.C. Brown, C. Johns-Krull, M. Aschwanden, T. Metcalf, A. Conway, *Sol. Phys.* **210**, 3 (2002)
- R.P. Lin, S. Krucker, G.J. Hurford, D.M. Smith, H.S. Hudson, G.D. Holman, R.A. Schwartz, B.R. Dennis, G.H. Share, R.J. Murphy, A.G. Emslie, C. Johns-Krull, N. Vilmer, *Astrophys. J.* **595**, L69 (2003)
- R.E. Lingenfelter, E.J. Flamm, E.H. Canfield, S. Kellman, *J. Geophys. Res.* **70**, 4077 (1965a)
- R.E. Lingenfelter, E.J. Flamm, E.H. Canfield, S. Kellman, *J. Geophys. Res.* **70**, 4087 (1965b)
- R.E. Lingenfelter, R. Ramaty, *High Energy Nuclear Reactions in Solar Flares* (1967a)
- R.E. Lingenfelter, R. Ramaty, *Planet. Space Sci.* **15**, 1303 (1967b)
- Y.E. Litvinenko, B.V. Somov, *Sol. Phys.* **146**, 127 (1993)
- J.A. Lockwood, H. Debrunner, *Space Sci. Rev.* **88**, 483 (1999)
- J.A. Lockwood, H. Debrunner, J.M. Ryan, *Sol. Phys.* **173**, 151 (1997)
- C. Lopate, *Geophys. Monogr.* **165**, 283 (2006)
- T. Lüthi, A. Magun, M. Miller, *Astron. Astrophys.* **415**, 1123 (2004)
- A.L. MacKinnon, *Astron. Astrophys.* **226**, 284 (1989)
- A.L. MacKinnon, *Geophys. Monogr.* **165**, 157 (2006)
- A.L. MacKinnon, *Astron. Astrophys.* **462**, 763 (2007)
- A.L. MacKinnon, J.C. Brown, *Astron. Astrophys.* **232**, 544 (1990)
- A.L. MacKinnon, P.C.V. Mallik, *Astron. Astrophys.* **510**, A29+ (2010)
- A.L. MacKinnon, M.P. Toner, *Astron. Astrophys.* **409**, 745 (2003)
- N. Mandzhavidze, R. Ramaty, *Astrophys. J.* **389**, 739 (1992)
- N. Mandzhavidze, R. Ramaty, in *High Energy Solar Physics Workshop - Anticipating HESSI*, ed. by R. Ramaty, N. Mandzhavidze. *Astronomical Society of the Pacific Conference Series*, vol. 206 (2000), p. 64
- N. Mandzhavidze, R. Ramaty, B. Kozlovsky, *Astrophys. J.* **518**, 918 (1999)
- S. Masson, K. Klein, R. Bütikofer, E. Flückiger, V. Kurt, B. Yushkov, S. Krucker, *Sol. Phys.* **257**, 305 (2009)
- M.L. McConnell, K. Bennett, A.L. MacKinnon, R. Miller, G. Rank, J.M. Ryan, V. Schönfelder, in *Proc. 25th ICRC, Durban (South Africa)*, vol. 113 (1997)
- R.A. Mewaldt, R.A. Leske, E.C. Stone, A.F. Barghouty, A.W. Labrador, C.M.S. Cohen, A.C. Cummings, A.J. Davis, T.T. von Rosenvinge, M.E. Wiedenbeck, *Astrophys. J.* **693**, L11 (2009)
- J. Meyer, *Adv. Space Res.* **13**, 377 (1993)
- J.A. Miller, P.J. Cargill, A.G. Emslie, G.D. Holman, B.R. Dennis, T.N. LaRosa, R.M. Winglee, S.G. Benka, S. Tsuneta, *J. Geophys. Res.* **102**, 14631 (1997)
- P. Morrison, in *Fifth International Congress on Cosmic Radiation*, ed. by M.S. Vallarta (1958), p. 305
- Y. Muraki, K. Murakami, M. Miyazaki, K. Mitsui, S. Shibata, S. Sakakibara, T. Sakai, T. Takahashi, T. Yamada, K. Yamaguchi, *Astrophys. J.* **400**, L75 (1992)
- R.J. Murphy, C.D. Dermer, R. Ramaty, *Astrophys. J. Suppl.* **63**, 721 (1987)
- R.J. Murphy, B. Kozlovsky, R. Ramaty, *Astrophys. J.* **331**, 1029 (1988)
- R.J. Murphy, R. Ramaty, D.V. Reames, B. Kozlovsky, *Astrophys. J.* **371**, 793 (1991)
- R.J. Murphy, G.H. Share, J.E. Grove, W.N. Johnson, R.L. Kinzer, R.A. Kroeger, J.D. Kurfess, M.S. Strickman, S.M. Matz, D.A. Grabelsky, W.R. Purcell, M.P. Ulmer, R.A. Cameron, G.V. Jung, C.M. Jensen, W.T. Vestrand, D.J. Forrest, in *American Institute of Physics Conference Series*, vol. 280, ed. by M. Friedlander, N. Gehrels, D.J. Macomb. (1993), p. 619
- R.J. Murphy, G.H. Share, J.E. Grove, W.N. Johnson, R.L. Kinzer, J.D. Kurfess, M.S. Strickman, G.V. Jung, *Astrophys. J.* **490**, 883 (1997)
- R.J. Murphy, G.H. Share, K.W. Delsignore, X.-M. Hua, *Astrophys. J.* **510**, 1011 (1999)
- R.J. Murphy, G.H. Share, X.-M. Hua, R.P. Lin, D.M. Smith, R.A. Schwartz, *Astrophys. J.* **595**, L93 (2003)
- R.J. Murphy, G.H. Share, J.G. Skibo, B. Kozlovsky, *Astrophys. J. Suppl. Ser.* **161**, 495 (2005)
- R.J. Murphy, B. Kozlovsky, G.H. Share, X.-M. Hua, R.E. Lingenfelter, *Astrophys. J. Suppl. Ser.* **168**, 167 (2007)
- R.J. Murphy, B. Kozlovsky, J. Kiener, G.H. Share, *Astrophys. J. Suppl. Ser.* **183**, 142 (2009)

- I.N. Myagkova, S.N. Kuznetsov, B.Y. Yushkov, K. Kudela, in *35th COSPAR Scientific Assembly*. COSPAR, Plenary Meeting, vol. 35 (2004), p. 1511
- I.N. Myagkova, S.N. Kuznetsov, V.G. Kurt, B.Y. Yuskov, V.I. Galkin, E.A. Muravieva, K. Kudela, *Adv. Space Res.* **40**, 1929 (2007)
- J.P. Naiman, D.M. Smith, R.J. Murphy, G.H. Share, A.Y. Shih, J. Kiener, AGU Fall Meeting Abstracts B 1670+ (2008)
- F. Pelaez, P. Mandrou, M. Niel, B. Mena, N. Vilmer, G. Trotter, F. Lebrun, J. Paul, O. Terekhov, R. Siuniaev, *Sol. Phys.* **140**, 121 (1992)
- B. Pirard, R.S. Woolf, U. Bravar, P.J. Bruillard, E.O. Flückiger, J.S. Legere, A.L. MacKinnon, J.R. Macri, P.C.V. Mallik, M.R. Moser, J.M. Ryan, *Nucl. Instrum. Methods Phys. Res., Sect. A, Accel. Spectrom. Detect. Assoc. Equip.* **603**, 406 (2009)
- T.A. Prince, J.C. Ling, W.A. Mahoney, G.R. Riegler, A.S. Jacobson, *Astrophys. J.* **255**, L81 (1982)
- K.R. Pyle, J.A. Simpson, in *International Cosmic Ray Conference*, vol. 3 (1991), p. 53
- R. Ramaty, in *Physics of the Sun*, vol. 2 (1986), p. 2291
- R. Ramaty, C.J. Crannell, *Astrophys. J.* **203**, 766 (1976)
- R. Ramaty, N. Mandzhavidze, in *Highly Energetic Physical Processes and Mechanisms for Emission from Astrophysical Plasmas*, ed. by P.C.H. Martens, S. Tsuruta, M.A. Weber. IAU Symposium, vol. 195 (2000), p. 123
- R. Ramaty, B. Kozlovsky, R.E. Lingenfelter, *Astrophys. J. Suppl. Ser.* **40**, 487 (1979)
- R. Ramaty, N. Mandzhavidze, B. Kozlovsky, R.J. Murphy, *Astrophys. J.* **455**, L193+ (1995)
- R. Ramaty, N. Mandzhavidze, B. Kozlovsky, in *American Institute of Physics Conference Series*, vol. 374, ed. by R. Ramaty, N. Mandzhavidze, X.-M. Hua, (1996), p. 172
- R. Ramaty, N. Mandzhavidze, C. Barat, G. Trotter, *Astrophys. J.* **479**, 458 (1997)
- G. Rank, J. Ryan, H. Debrunner, M. McConnell, V. Schönfelder, *Astron. Astrophys.* **378**, 1046 (2001)
- J.C. Raymond, G. Holman, A. Ciaravella, A. Panasyuk, Y.-K. Ko, J. Kohl, *Astrophys. J.* **659**, 750 (2007)
- D.V. Reames, *Space Sci. Rev.* **90**, 413 (1999)
- D.V. Reames, L.M. Barbier, T.T. von Roseninge, G.M. Mason, J.E. Mazur, J.R. Dwyer, *Astrophys. J.* **483**, 515 (1997)
- E. Rieger, *Astrophys. J.* **90**, 645 (1994)
- E. Rieger, H. Marschhäuser, in *Max '91/SMM Solar Flares: Observations and Theory*, ed. by R.M. Winglee, A.L. Kiplinger (1991), p. 68
- E. Rieger, W.Q. Gan, H. Marschhäuser, *Sol. Phys.* **183**, 123 (1998)
- D. Ruffolo, *Astrophys. J.* **382**, 688 (1991)
- J.M. Ryan, *Space Sci. Rev.* **93**, 581 (2000)
- J. Ryan, K. Bennett, H. Debrunner, D. Forrest, J. Lockwood, M. Loomis, M. McConnell, D. Morris, V. Schönfelder, B.N. Swanenburg, W. Webber, *Adv. Space Res.* **13**, 255 (1993)
- J. Ryan, D. Forrest, J. Lockwood, M. Loomis, M. McConnell, D. Morris, W. Webber, K. Bennett, L. Hanlon, C. Winkler, H. Debrunner, G. Rank, V. Schönfelder, B.N. Swanenburg, in *High-Energy Solar Phenomena - a New Era of Spacecraft Measurements*, ed. by J. Ryan, W.T. Vestrand. American Institute of Physics Conference Series, vol. 294 (1994), p. 89
- J.I. Sakai, Y. Nagasugi, *Astron. Astrophys.* **474**, L33 (2007)
- T. Sako, K. Watanabe, Y. Muraki, Y. Matsubara, H. Tsujihara, M. Yamashita, T. Sakai, S. Shibata, J.F. Valdés-Galicia, L.X. González, A. Hurtado, O. Musalem, P. Miranda, N. Martinic, R. Ticona, A. Velarde, F. Kakimoto, S. Ogio, Y. Tsunesada, H. Tokuno, Y.T. Tanaka, I. Yoshikawa, T. Terasawa, Y. Saito, T. Mukai, M. Gros, *Astrophys. J.* **651**, L69 (2006)
- J.T. Schmelz, K. Nasraoui, J.K. Roames, L.A. Lippner, J.W. Garst, *Astrophys. J.* **634**, L197 (2005)
- C.J. Schrijver, H.S. Hudson, R.J. Murphy, G.H. Share, T.D. Tarbell, *Astrophys. J.* **650**, 1184 (2006)
- G.H. Share, R.J. Murphy, *Astrophys. J.* **452**, 933 (1995)
- G.H. Share, R.J. Murphy, *Astrophys. J.* **508**, 876 (1998)
- G.H. Share, R.J. Murphy, in *High Energy Solar Physics Workshop - Anticipating HESSI*, ed. by R. Ramaty, N. Mandzhavidze. Astronomical Society of the Pacific Conference Series, vol. 206 (2000), p. 377
- G.H. Share, R.J. Murphy, *Geophys. Monogr.* **165**, 177 (2006)
- G.H. Share, R.J. Murphy, J. Kiener, N. de Séréville, *Astrophys. J.* **573**, 464 (2002)
- G.H. Share, R.J. Murphy, E.K. Newton, *Sol. Phys.* **201**, 191 (2001)
- G.H. Share, R.J. Murphy, J.G. Skibo, D.M. Smith, H.S. Hudson, R.P. Lin, A.Y. Shih, B.R. Dennis, R.A. Schwartz, B. Kozlovsky, *Astrophys. J.* **595**, L85 (2003a)
- G.H. Share, R.J. Murphy, D.M. Smith, R.P. Lin, B.R. Dennis, R.A. Schwartz, *Astrophys. J.* **595**, L89 (2003b)
- G.H. Share, R.J. Murphy, D.M. Smith, R.A. Schwartz, R.P. Lin, *Astrophys. J.* **615**, L169 (2004)
- G.H. Share, R.J. Murphy, A.J. Tylka, B. Kozlovsky, J.M. Ryan, C. Gwon, *J. Geophys. Res.* **116**(A15), A03102 (2011)
- M.A. Shea, D.F. Smart, K.R. Pyle, *Geophys. Res. Lett.* **18**, 1655 (1991)

- S. Shibata, *J. Geophys. Res.* **99**, 6651 (1994)
- A.Y. Shih, R.P. Lin, G.J. Hurford, S.E. Boggs, A.C. Zoglauer, C.B. Wunderer, J.G. Sample, P. Turin, S. McBride, D.M. Smith, H. Tajima, P.N. Luke, M.S. Amman, in *AAS/Solar Physics Division Meeting*, vol. 40 (2009a). #18.10
- A.Y. Shih, R.P. Lin, D.M. Smith, *Astrophys. J.* **698**, L152 (2009b)
- A.Y. Shih, D.M. Smith, R.P. Lin, G.J. Hurford, in *Bulletin of the American Astronomical Society*, vol. 38 (2007), p. 175
- A.Y. Shih, D.M. Smith, R.P. Lin, G.J. Hurford, S. Krucker, R.A. Schwartz, G.H. Share, R.J. Murphy, AGU Fall Meeting Abstracts D 1132+ (2003)
- A.V.R. Silva, G.H. Share, R.J. Murphy, J.E.R. Costa, C.G.G. de Castro, J. Raulin, P. Kaufmann, *Sol. Phys.* **245**, 311 (2007)
- D.F. Smart, M.A. Shea, K. O'Brien, in *International Cosmic Ray Conference*, vol. 4 (1995), p. 171
- D.M. Smith, R.P. Lin, P. Turin, D.W. Curtis, J.H. Primbsch, R.D. Campbell, R. Abiad, P. Schroeder, C.P. Cork, E.L. Hull, D.A. Landis, N.W. Madden, D. Malone, R.H. Pehl, T. Raudorf, P. Sangsingkeow, R. Boyle, I.S. Banks, K. Shirey, R. Schwartz, *Sol. Phys.* **210**, 33 (2002)
- D.M. Smith, G.H. Share, R.J. Murphy, R.A. Schwartz, A.Y. Shih, R.P. Lin, *Astrophys. J.* **595**, L81 (2003)
- F.W. Stecker, *Astrophys. Space Sci.* **6**, 377 (1970)
- A. Struminsky, M. Matsuoka, K. Takahashi, *Astrophys. J.* **429**, 400 (1994)
- A.N. Suri, E.L. Chupp, D.J. Forrest, C. Reppin, *Sol. Phys.* **43**, 415 (1975)
- R. Talon, G. Vedrenne, A.S. Melioranskii, N.F. Pissarenko, V.M. Shamolin, O.B. Likin, in *Solar Gamma-, X-, and EUV Radiation*, ed. by S.R. Kane. IAU Symposium, vol. 68 (1975), p. 315
- D.H. Tamres, D.B. Melrose, R.C. Canfield, *Astrophys. J.* **342**, 576 (1989)
- V. Tatischeff, B. Kozlovsky, J. Kiener, R.J. Murphy, *Astrophys. J. Suppl. Ser.* **165**, 606 (2006)
- M.P. Toner, High-energy neutral emissions from solar flares. Ph.D. thesis, University of Glasgow (2004)
- M.P. Toner, A.L. MacKinnon, *Sol. Phys.* **223**, 155 (2004)
- G. Trottet, C. Barat, R. Ramaty, N. Vilmer, J.P. Dezalay, A. Kuznetsov, N. Mandzhavidze, R. Sunyaev, R. Talon, O. Terekhov, in *American Institute of Physics Conference Series*, vol. 374, ed. by R. Ramaty, N. Mandzhavidze, X.-M. Hua (1996), p. 153
- G. Trottet, S. Krucker, T. Lüthi, A. Magun, *Astrophys. J.* **678**, 509 (2008)
- G. Trottet, N. Vilmer, in *European Meeting on Solar Physics*, ed. by G.M. Simnett, C.E. Alissandrakis, L. Vlahos. Lecture Notes in Physics, vol. 489 (Springer, Berlin, 1997), p. 219
- G. Trottet, N. Vilmer, C. Barat, A. Benz, A. Magun, A. Kuznetsov, R. Sunyaev, O. Terekhov, *Astron. Astrophys.* **334**, 1099 (1998)
- G. Trottet, N. Vilmer, C. Barat, J.P. Dezalay, R. Talon, R.A. Siuniaev, A. Kuznetsov, O. Terekhov, *Astron. Astrophys. Suppl.* **97**, 337 (1993)
- H. Tsuchiya, Y. Muraki, K. Masuda, Y. Matsubara, T. Koi, T. Sako, S. Ohno, T. Hoshida, S. Shibata, Y. Munakata, K. Hatanaka, T. Wakasa, H. Sakai, *Nucl. Instrum. Methods Phys. Res., Sect. A, Accel. Spectrom. Detect. Assoc. Equip.* **463**, 183 (2001)
- I.G. Usoskin, G.A. Kovaltsov, H. Kananen, P. Tanskanen, *Ann. Geophys.* **15**, 375 (1997)
- J.F. Valdés-Galicia, Y. Muraki, K. Watanabe, Y. Matsubara, T. Sako, L.X. Gonzalez, O. Musalem, A. Hurtado, *Adv. Space Res.* **43**, 565 (2009)
- G. Vedrenne, J. Roques, V. Schönfelder, P. Mandrou, G.G. Lichti, A. von Kienlin, B. Cordier, S. Schanne, J. Knödseder, G. Skinner, P. Jean, F. Sanchez, P. Caraveo, B. Teegarden, P. von Ballmoos, L. Bouchet, P. Paul, J. Matteson, S. Boggs, C. Wunderer, P. Leleux, G. Weidenspointner, P. Durouchoux, R. Diehl, A. Strong, M. Cassé, M.A. Clair, Y. André, *Astron. Astrophys.* **411**, L63 (2003)
- J.E. Vernazza, E.H. Avrett, R. Loeser, *Astrophys. J. Suppl. Ser.* **45**, 635 (1981)
- W.T. Vestrand, D.J. Forrest, *Astrophys. J.* **409**, L69 (1993)
- N. Vilmer, S.R. Kane, G. Trottet, *Astron. Astrophys.* **108**, 306 (1982)
- N. Vilmer, A.L. MacKinnon, in *Energy Conversion and Particle Acceleration in the Solar Corona*, ed. by L. Klein. Lecture Notes in Physics, vol. 612 (Springer, Berlin, 2003), p. 127
- N. Vilmer, A.L. MacKinnon, G. Trottet, C. Barat, *Astron. Astrophys.* **412**, 865 (2003)
- N. Vilmer, M. Maksimovic, R.P. Lin, G. Trottet, in *Solar encounter. Proceedings of the First Solar Orbiter Workshop*, ed. by B. Battrick, H. Sawaya-Lacoste, E. Marsch, V. Martinez Pillet, B. Fleck, R. Marsden. ESA Special Publication, vol. 493 (2001), p. 405
- N. Vilmer, G. Trottet, C. Barat, J.P. Dezalay, R. Talon, R. Sunyaev, O. Terekhov, A. Kuznetsov, in *Advances in Solar Physics*, ed. by G. Belvedere, M. Rodono, G.M. Simnett. Lecture Notes in Physics, vol. 432 (Springer, Berlin, 1994), p. 197
- N. Vilmer, G. Trottet, C. Barat, R.A. Schwartz, S. Enome, A. Kuznetsov, R. Sunyaev, O. Terekhov, *Astron. Astrophys.* **342**, 575 (1999)
- E. Vogt, J.C. Héroux, *Sol. Phys.* **164**, 345 (1996)
- H.T. Wang, R. Ramaty, *Sol. Phys.* **36**, 129 (1974)

- K. Watanabe, M. Gros, P.H. Stoker, K. Kudela, C. Lopate, J.F. Valdés-Galicia, A. Hurtado, O. Musalem, R. Ogasawara, Y. Mizumoto, M. Nakagiri, A. Miyashita, Y. Matsubara, T. Sako, Y. Muraki, T. Sakai, S. Shibata, *Astrophys. J.* **636**, 1135 (2006)
- K. Watanabe, Y. Muraki, Y. Matsubara, K. Murakami, T. Sako, H. Tsuchiya, S. Masuda, M. Yoshimori, N. Ohmori, P. Miranda, N. Martinic, R. Ticona, A. Velarde, F. Kakimoto, S. Ogio, Y. Tsunesada, H. Tokuno, Y. Shirasaki, *Astrophys. J.* **592**, 590 (2003)
- K. Watanabe, Y. Muraki, Y. Matsubara, T. Sako, T. Sakai, H. Tsuchiya et al., in *International Cosmic Ray Conference*, vol. 1 (2005), p. 37
- C. Wertz, Y.E. Kim, F.L. Lang, *Astrophys. J. Suppl. Ser.* **73**, 349 (1990)
- E. Wiehr, *Astron. Astrophys.* **69**, 279 (1978)
- R.M. Winglee, *Astrophys. J.* **343**, 511 (1989)
- B.E. Woodgate, R.D. Robinson, K.G. Carpenter, S.P. Maran, S.N. Shore, *Astrophys. J.* **397**, L95 (1992)
- R.S. Woolf, J.M. Ryan, P.F. Blosler, U. Bravar, E.O. Flückiger, J.S. Legere, A. MacKinnon, P.C. Mallik, M.L. McConnell, B. Pirard, in *Society of Photo-Optical Instrumentation Engineers (SPIE) Conference Series*, vol. 7438 (2009)
- Z. Xu, J.-C. Héroux, G. Chambe, M. Karlický, C. Fang, *Astrophys. J.* **631**, 618 (2005)
- Z. Xu, J.C. Héroux, G. Chambe, A.G. Petraschen, C. Fang, *Astrophys. J.* **650**, 1193 (2006)
- M. Yoshimori, *Space Sci. Rev.* **51**, 85 (1989)
- Y. Yoshimori, in *International Cosmic Ray Conference*, vol. 6 (1999a), p. 5
- Y. Yoshimori, in *International Cosmic Ray Conference*, vol. 6 (1999b), p. 1
- V.V. Zharkova, M. Gordovskyy, *Astrophys. J.* **604**, 884 (2004)
- E.G. Zweibel, D.A. Haber, *Astrophys. J.* **264**, 648 (1983)